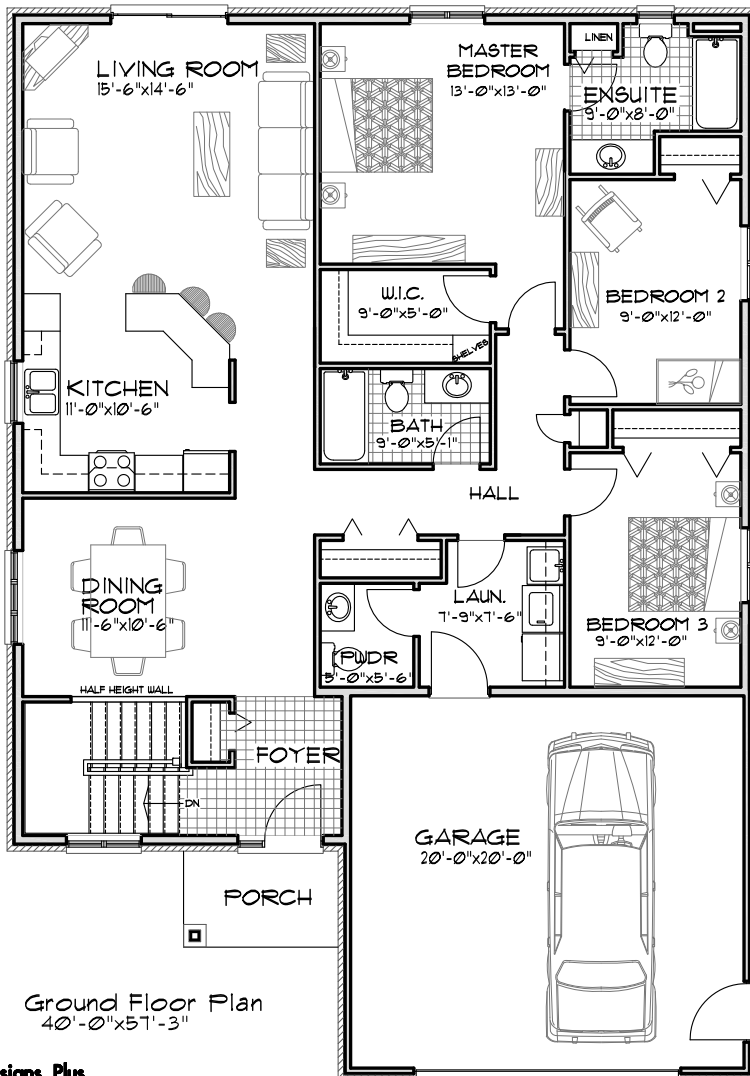
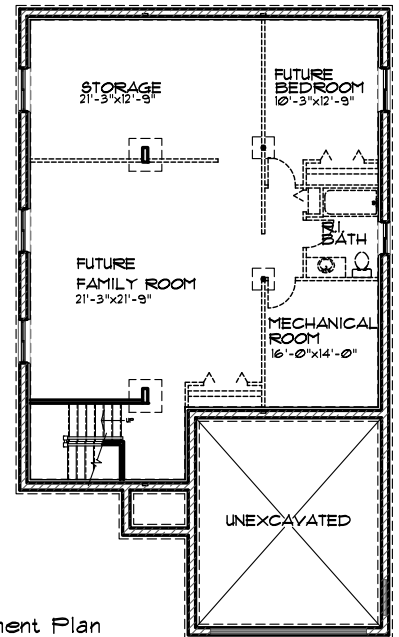


The Prestwick

- 1620 sq.ft. -



Ground Floor Plan
40'-0" x 51'-3"



Basement Plan

Featuring

- 3 Bedrooms
- 2½ Bathrooms
- Main Floor Laundry
- Covered Porch
- Dining Room Option to Den or Bedroom 4

- Optional Features Available
- Cold Storage
- Covered Rear Deck



**DIAMOND
HOMES
BY DAVIS**

1458 Fish & Game Club Rd.
Frankford, ON K0K 2C0
Tel: (613) 398-0170 Fax: (613) 398-3297
davis.john@sympatico.ca