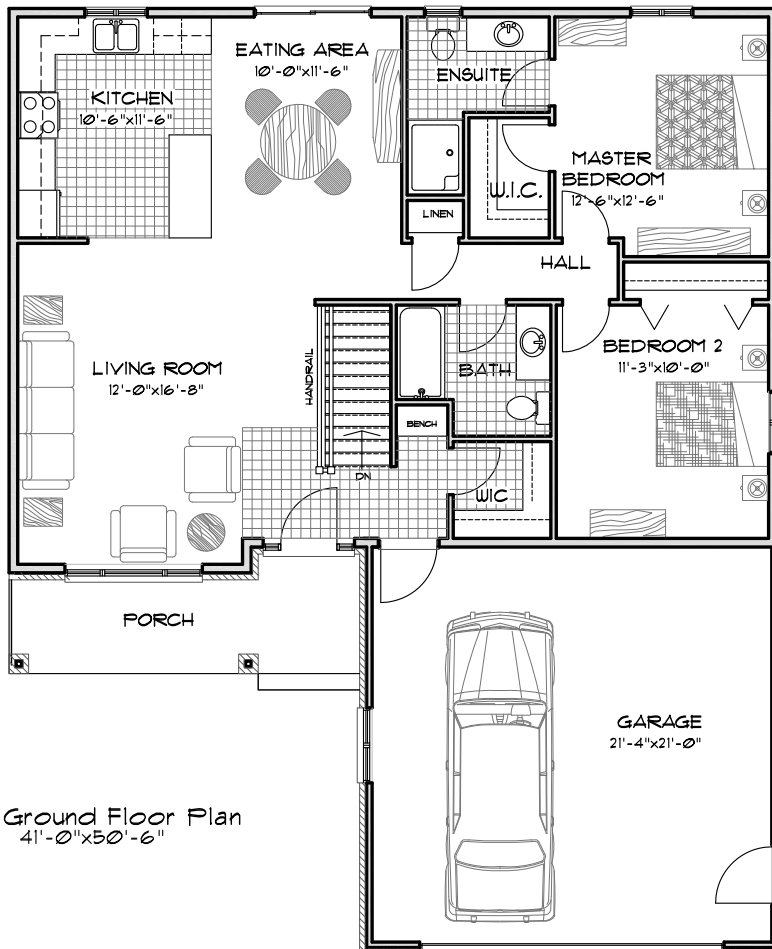


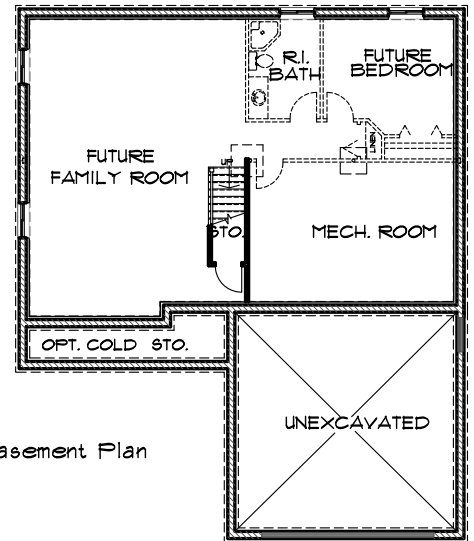
The Aberdeen II

Option A

- 1205 sq.ft. -



Ground Floor Plan
41'-0" x 50'-6"



Basement Plan

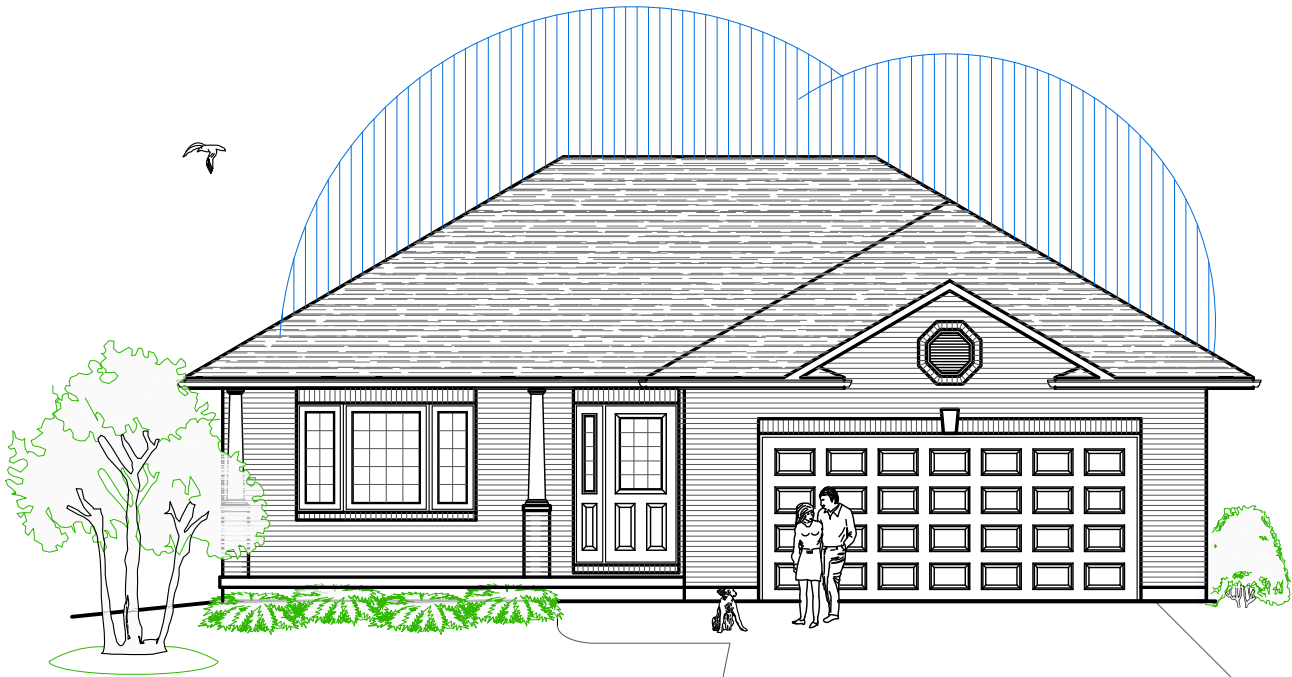
Featuring

- 2 Bedrooms
- 2 Bathrooms
- Foyer Walk-in Closet
- Covered Porch
- Oversize Double Garage
- Optional Features Available
- Cold Storage
- Covered Rear Deck



**DIAMOND
HOMES**
BY DAVIS

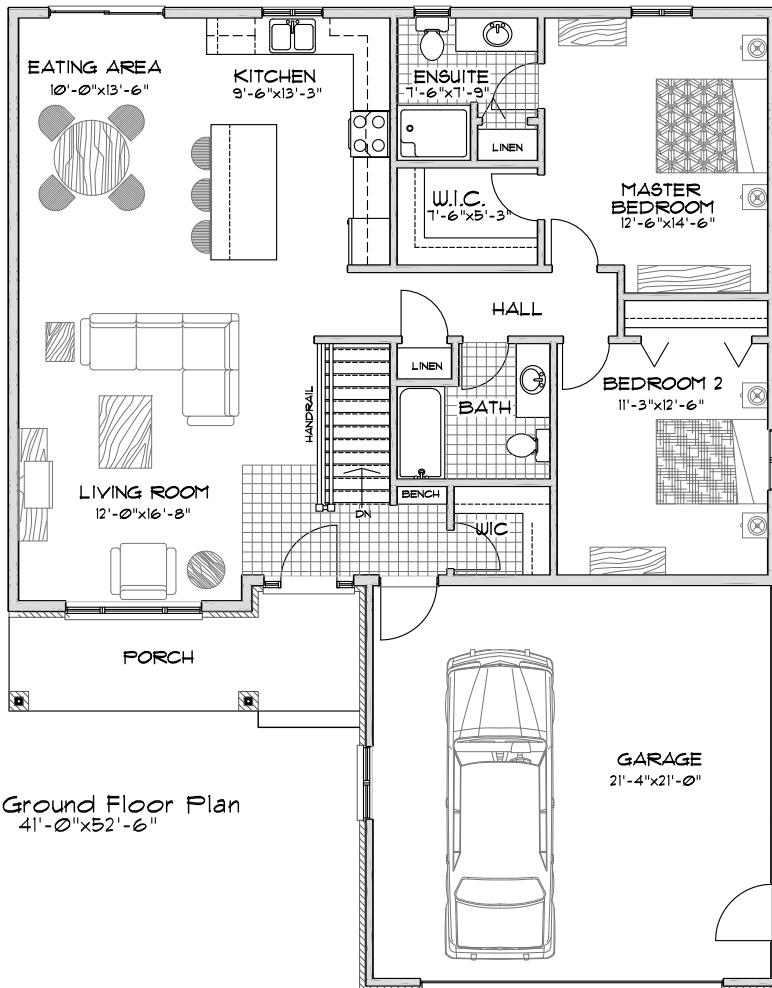
1458 Fish & Game Club Rd.
Frankford, ON K0K 2C0
Tel: (613) 398-0170 Fax: (613) 398-3297
davis.john@sympatico.ca



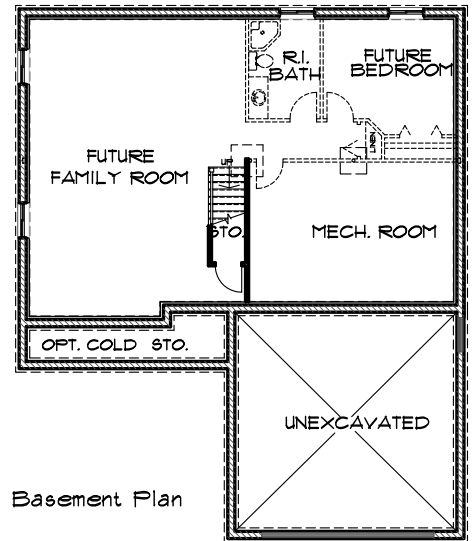
The Aberdeen II

Option B

- 1285 sq.ft. -



Ground Floor Plan
41'-0" x 52'-6"



Basement Plan

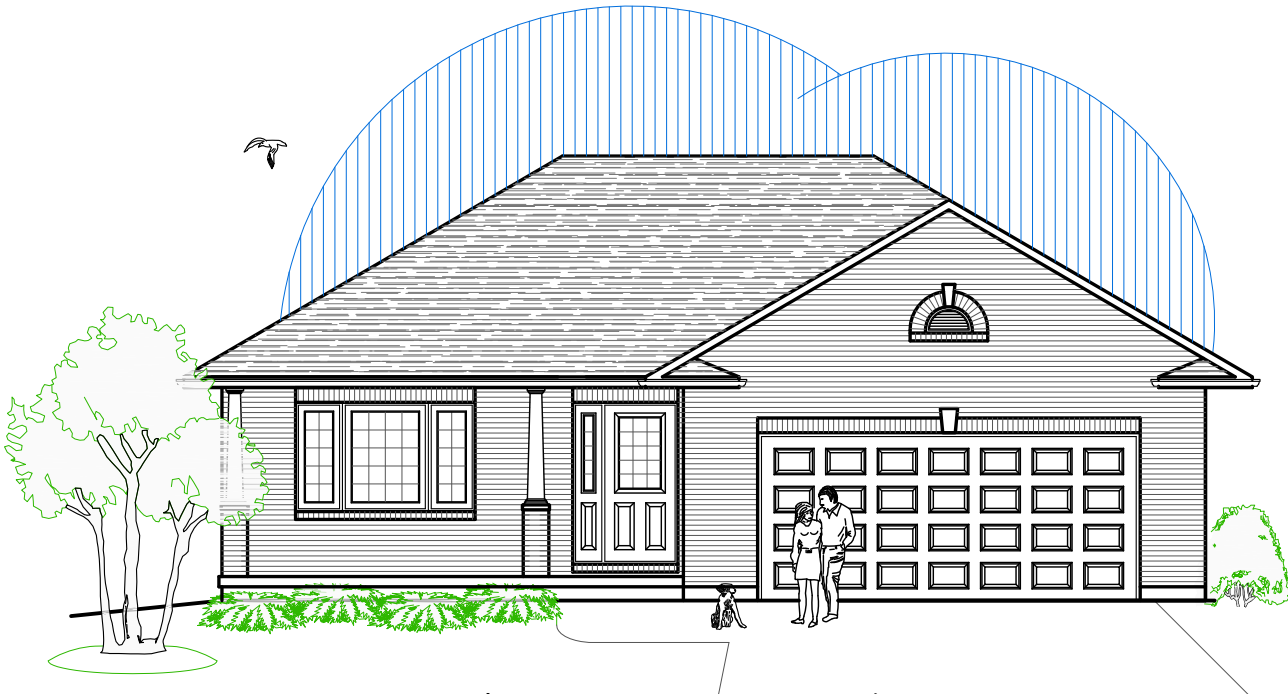
Featuring

- 2 Bedrooms
- 2 Bathrooms
- Foyer Walk-in Closet
- Covered Porch
- Oversize Double Garage
- Optional Features Available
- Cold Storage
- Covered Rear Deck



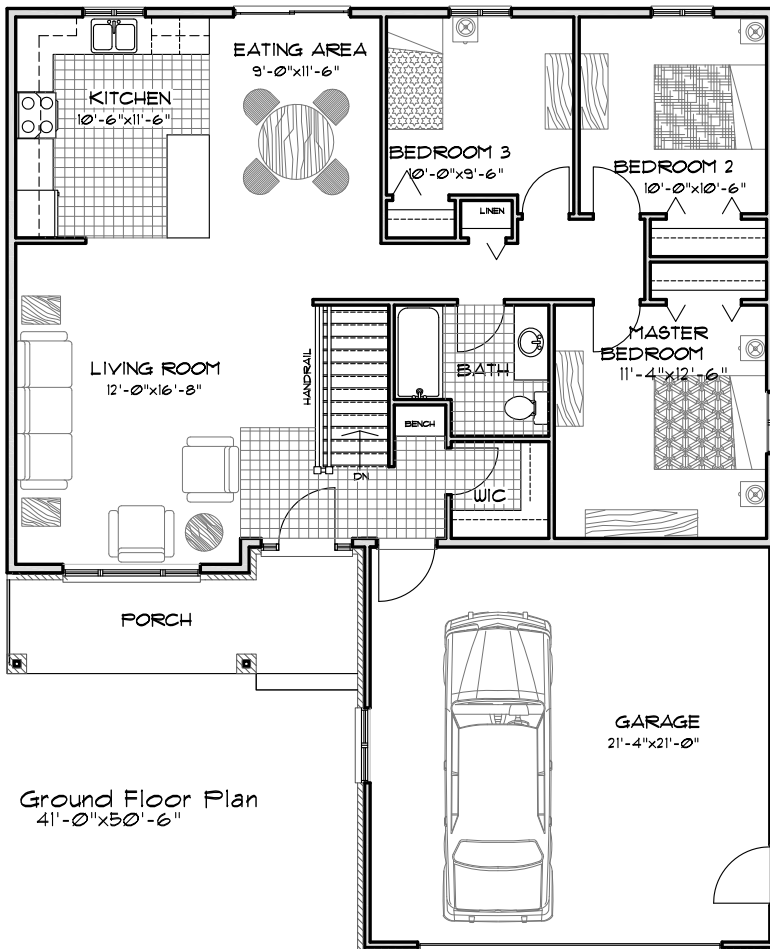
**DIAMOND
HOMES**
BY DAVIS

1458 Fish & Game Club Rd.
Frankford, ON K0K 2C0
Tel: (613) 398-0170 Fax: (613) 398-3297
davis.john@sympatico.ca

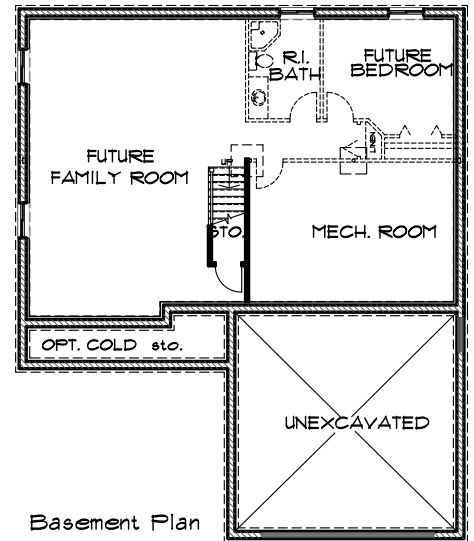


The Aberdeen

- 1205 sq.ft. -



Ground Floor Plan
41'-0" x 50'-6"

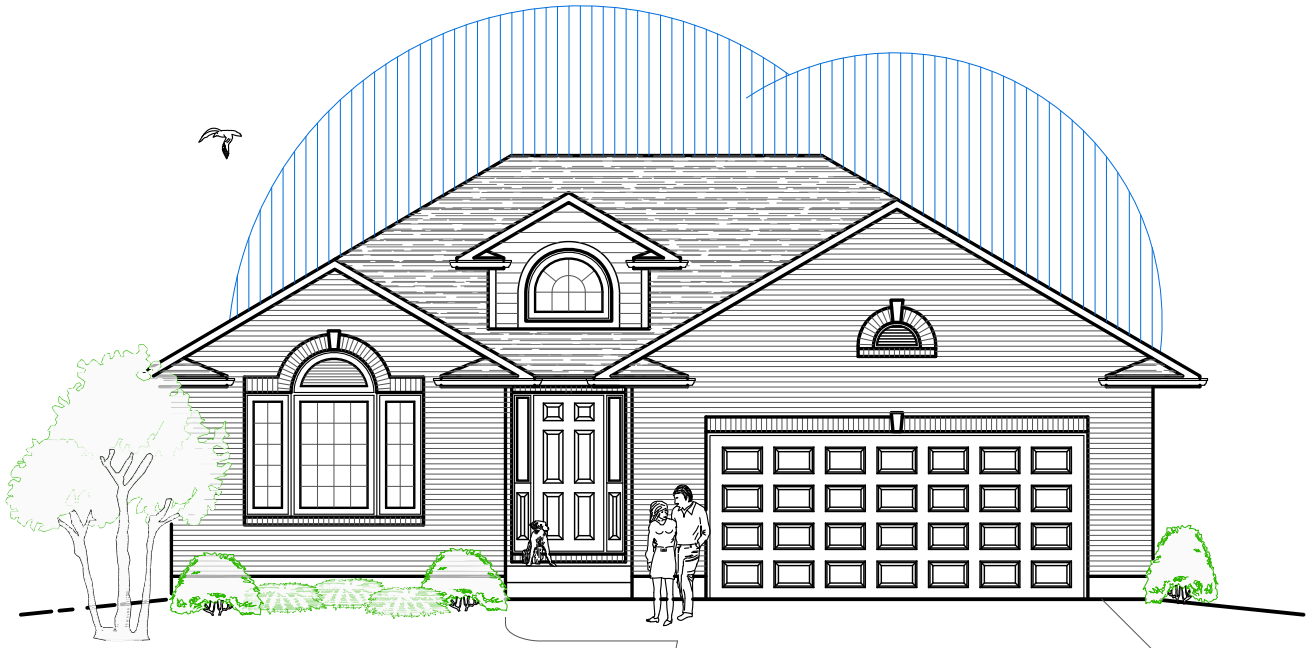


Basement Plan

Featuring

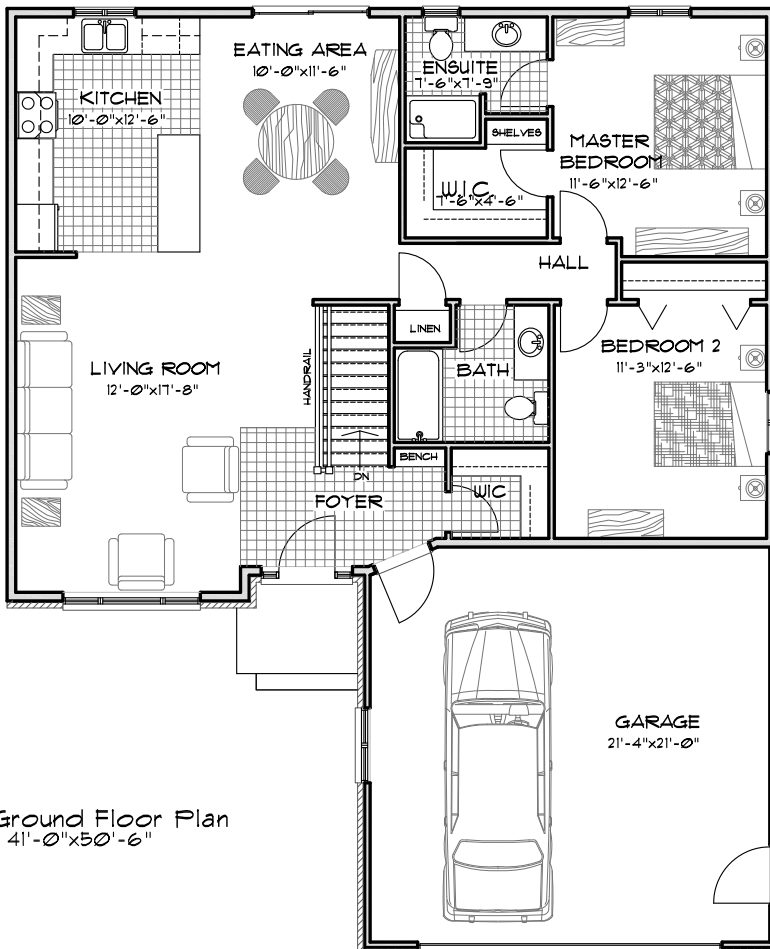
- 3 Bedrooms
- 1 Bathroom
- Foyer Walk-in Closet
- Covered Porch
- Oversize Double Garage
- Optional Features Available
- Cold Storage
- Covered Rear Deck



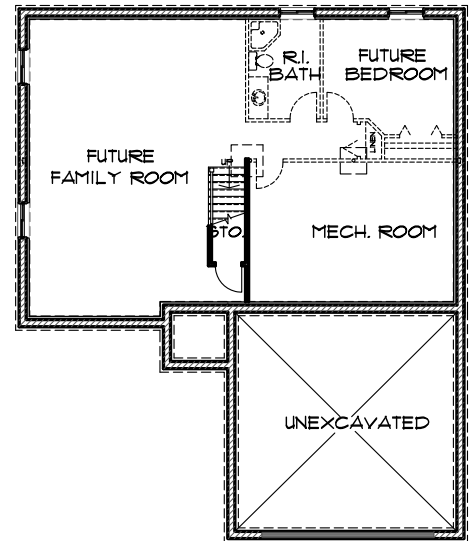


The Bellantrae II

- 1235 sq.ft. -



Ground Floor Plan
41'-0" x 50'-6"



Basement Plan

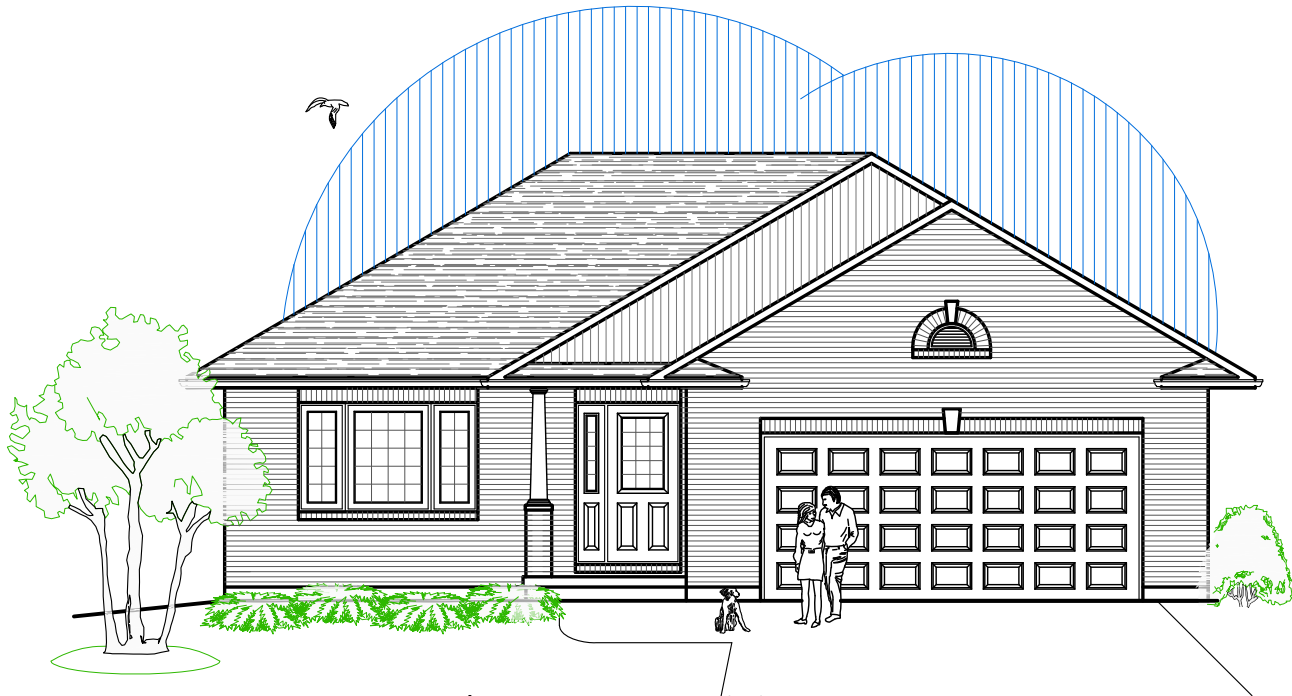
Featuring

- 2 Bedrooms
- 2 Bathrooms
- Foyer Walk-in Closet
- Oversize Double Garage

Optional Features Available
Cold Storage
Covered Rear Deck

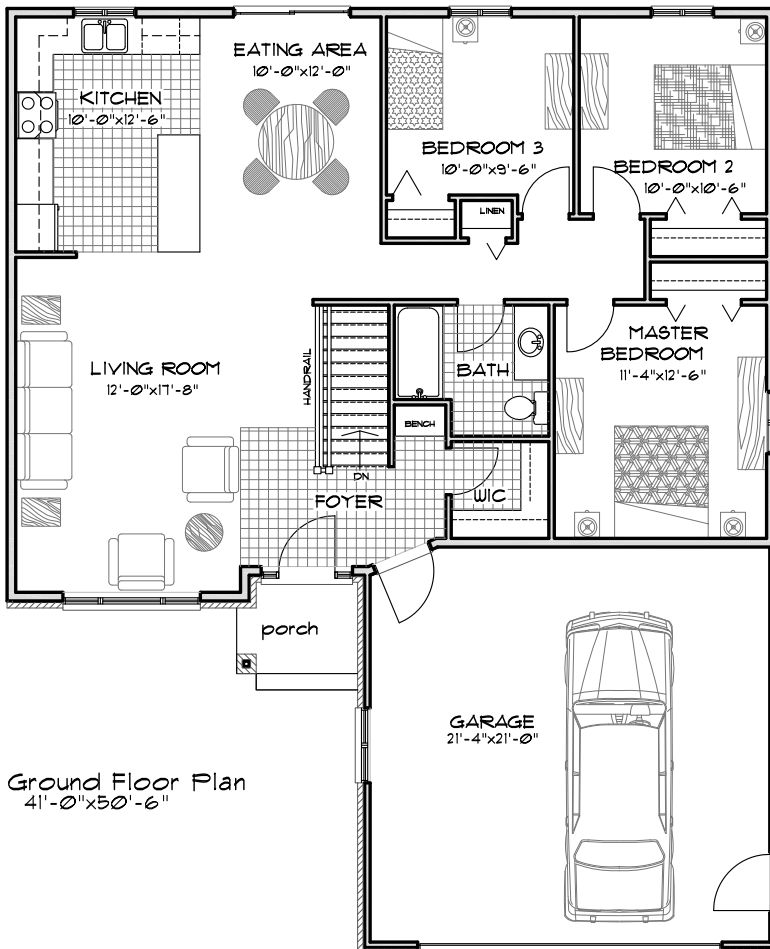


1458 Fish & Game Club Rd.
Frankford, ON K0K 2C0
Tel: (613) 398-0170 Fax: (613) 398-3297
davis.john@sympatico.ca

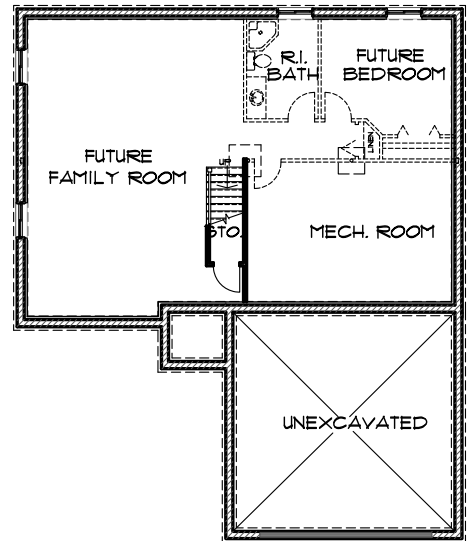


The Bellantrae

- 1235 sq.ft. -



Ground Floor Plan
41'-0" x 50'-6"

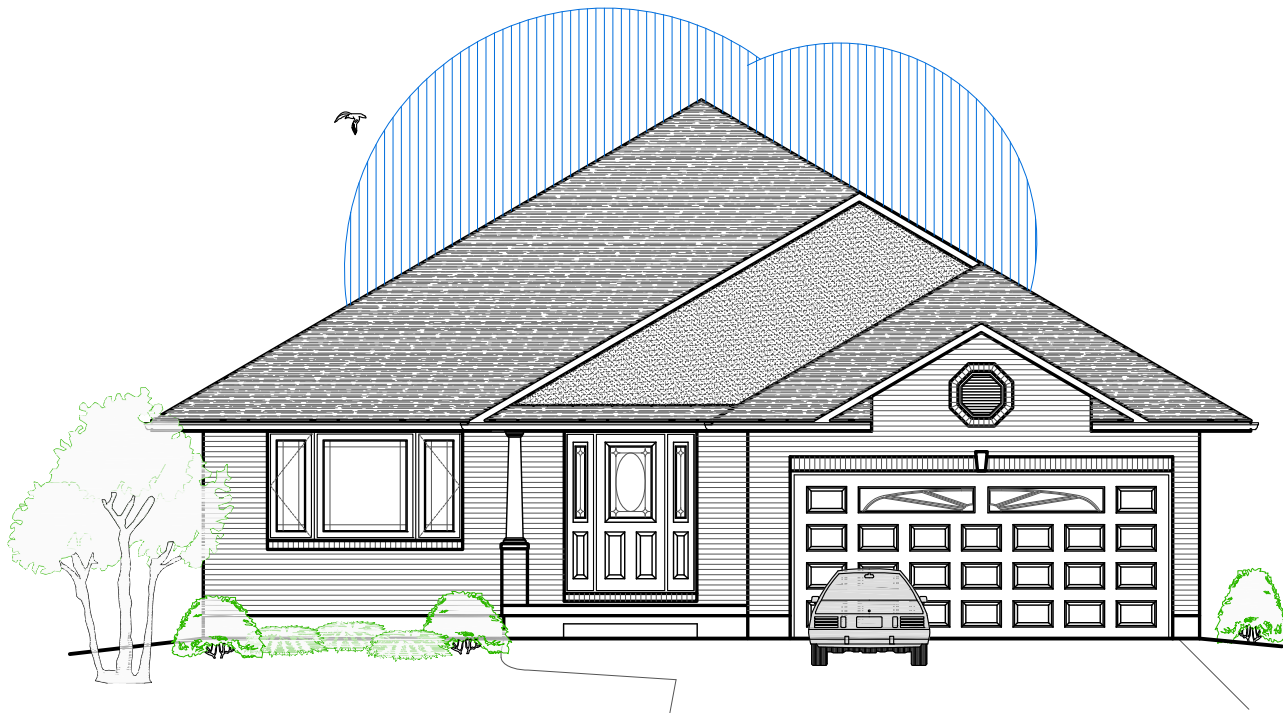


Basement Plan

Featuring

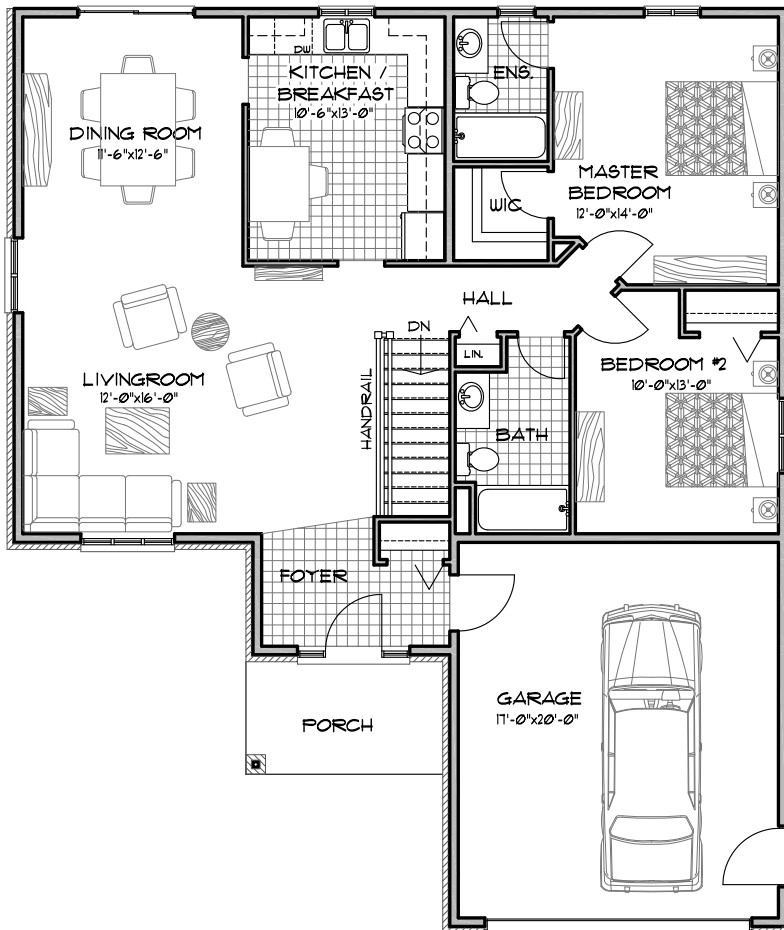
- 3 Bedrooms
- 1 Bathroom
- Foyer Walk-in Closet
- Covered Porch
- Oversize Double Garage
- Optional Features Available
- Cold Storage
- Covered Rear Deck



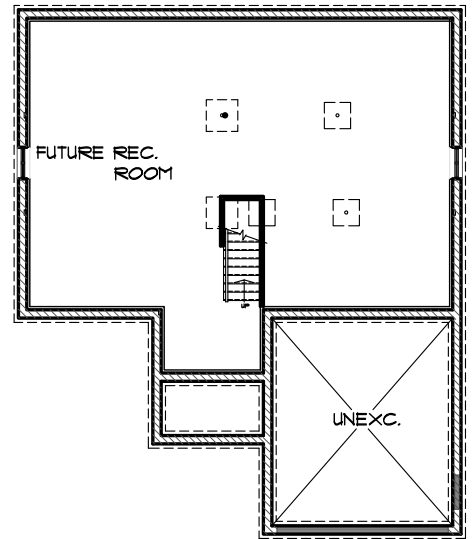


The Connel II

- 1265 sq.ft. -



Ground Floor Plan
41'-6" x 49'-6"



Basement Plan

Featuring

- 2 Bedrooms
- 2 Bathrooms
- Covered Porch

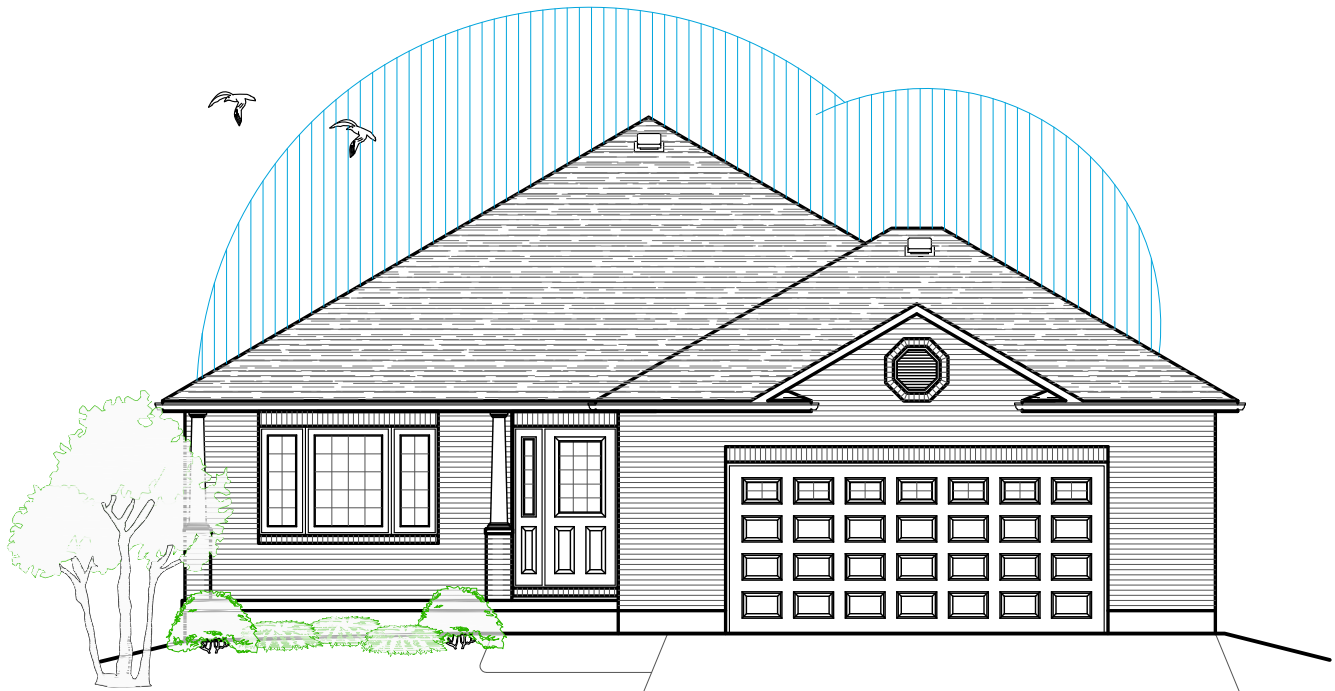
Optional Features Available
Cold Storage
Covered Rear Deck



**DIAMOND
HOMES**
BY DAVIS

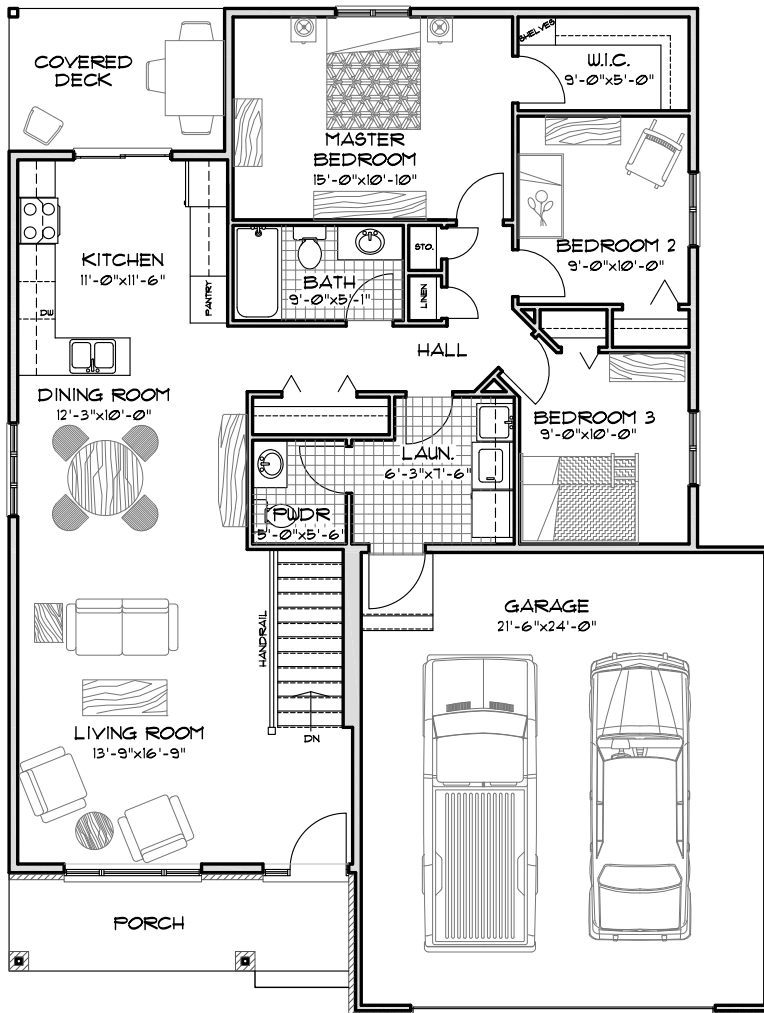
1458 Fish & Game Club Rd.
Frankford, ON K0K 2C0
Tel: (613) 398-0170 Fax: (613) 398-3297
davis.john@sympatico.ca

Plans by:
Designs Plus
613-961-9256
Sue Sampson
CONCEPTUAL PLANS ONLY, S.O.C.

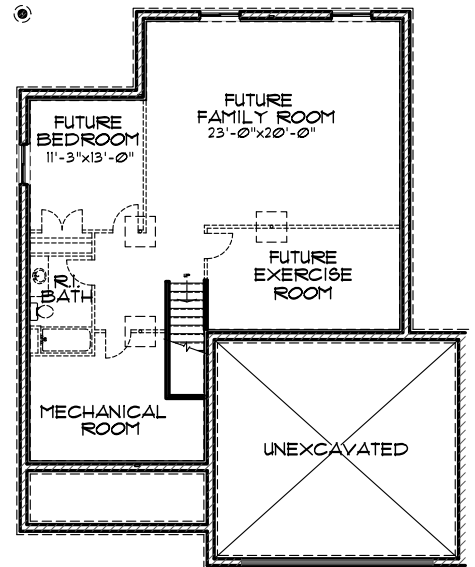


The Dundee

- 1310 sq.ft. -



Ground Floor Plan
41'-0" x 54'-3"



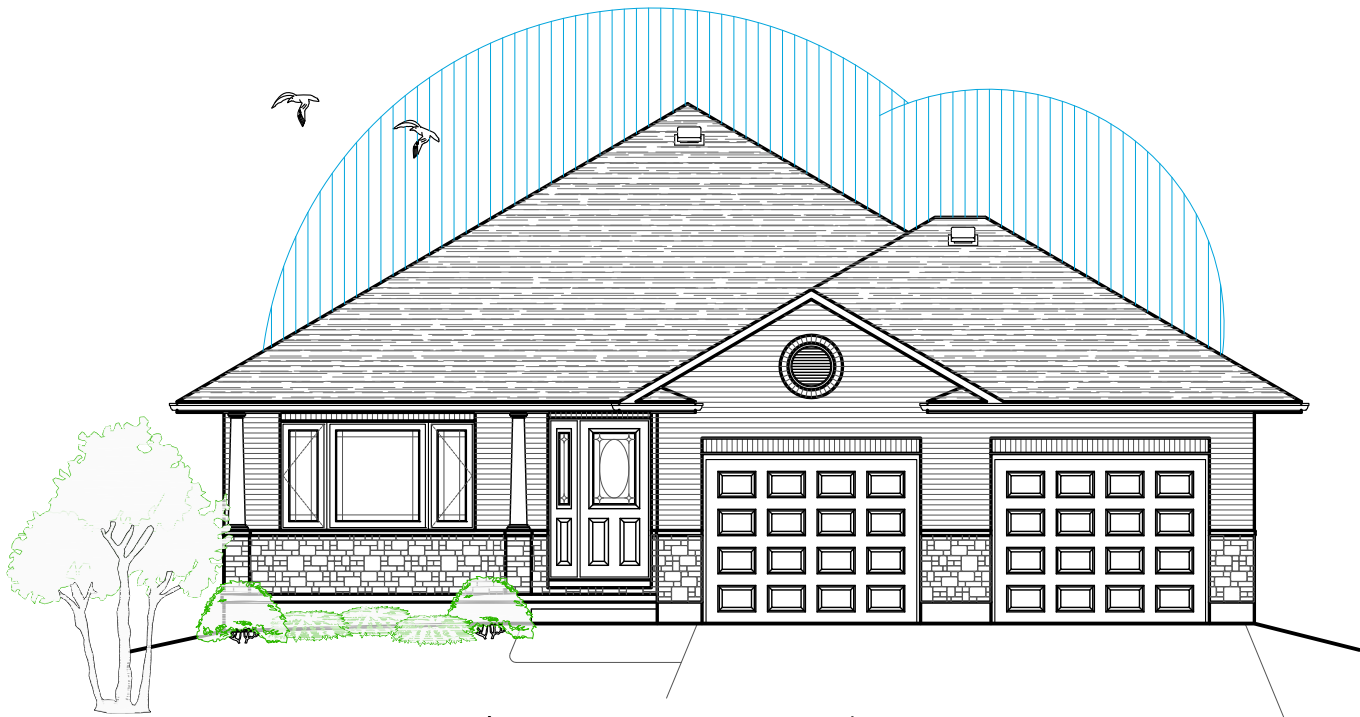
Basement Plan

Featuring

- 3 Bedrooms
- 1½ Bathrooms
- Main Floor Laundry
- Covered Porch
- Oversize Double Garage
- Optional Features Available
- Cold Storage
- Covered Rear Deck

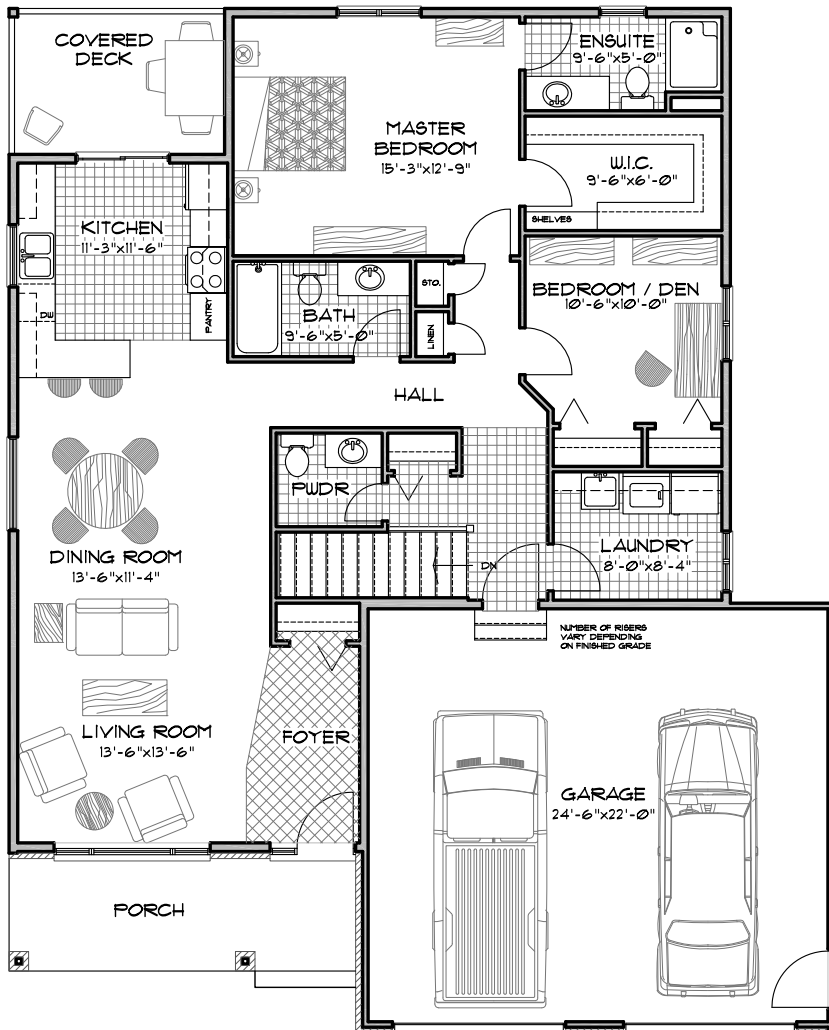


1458 Fish & Game Club Rd.
Frankford, ON K0K 2C0
Tel: (613) 398-0170 Fax: (613) 398-3297
davis.john@sympatico.ca

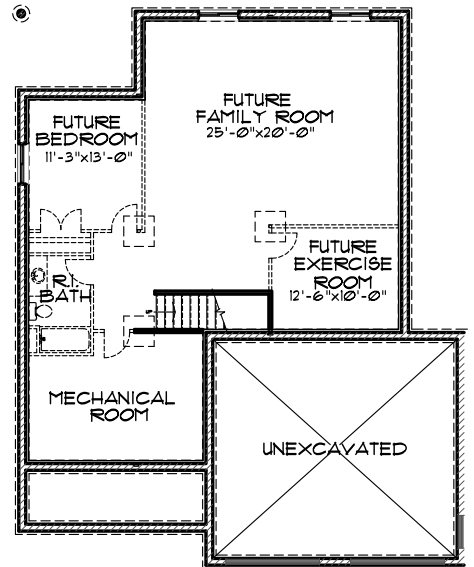


The Dundee II

- 1400 sq.ft. -



Ground Floor Plan
44'-0" x 54'-9"



Basement Plan

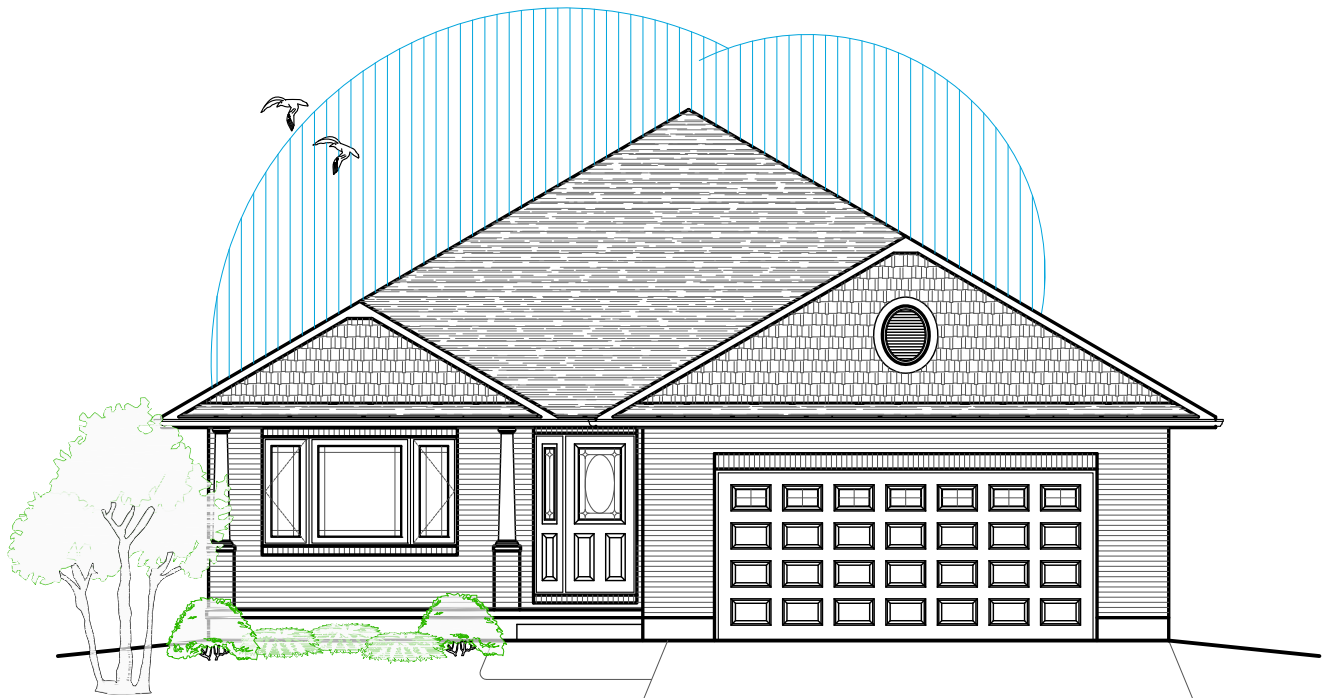
Featuring

- 2 Bedrooms
- 2½ Bathrooms
- Main Floor Laundry
- Covered Porch
- Oversize Double Garage
- Optional Features Available
- Cold Storage
- Covered Rear Deck



1458 Fish & Game Club Rd.
Frankford, ON K0K 2C0
Tel: (613) 398-0170 Fax: (613) 398-3297
davis.john@sympatico.ca

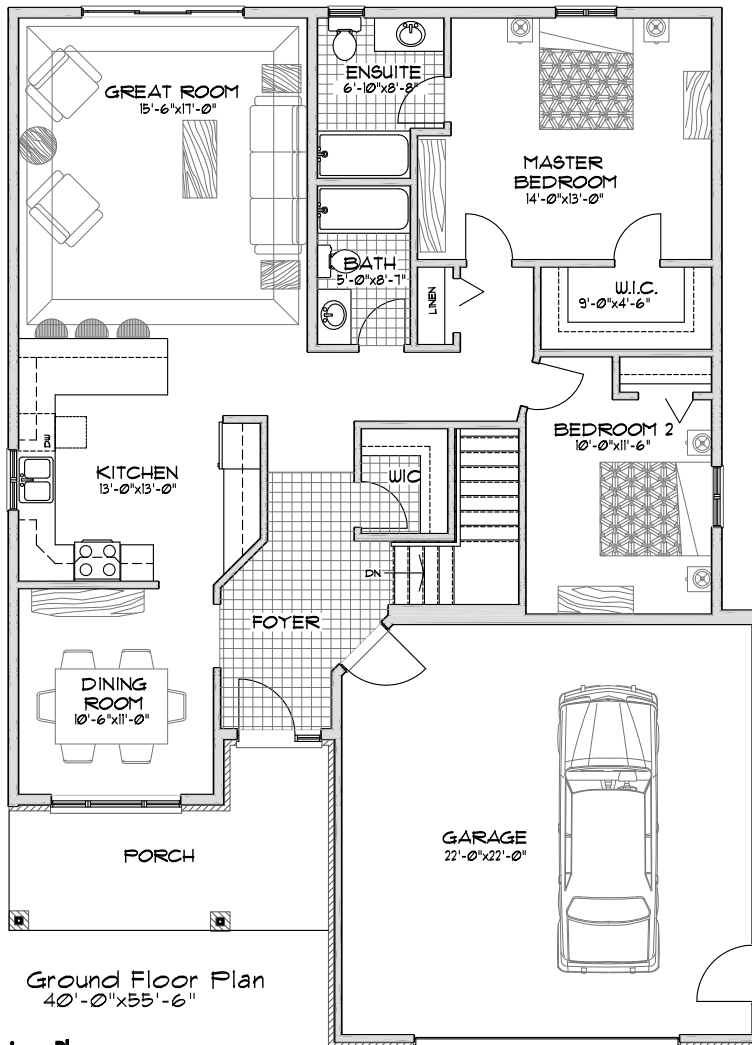
Plans by:
Designs Plus
613-961-9256
Sue Sampson
CONCEPTUAL PLANS ONLY, S.O.C.



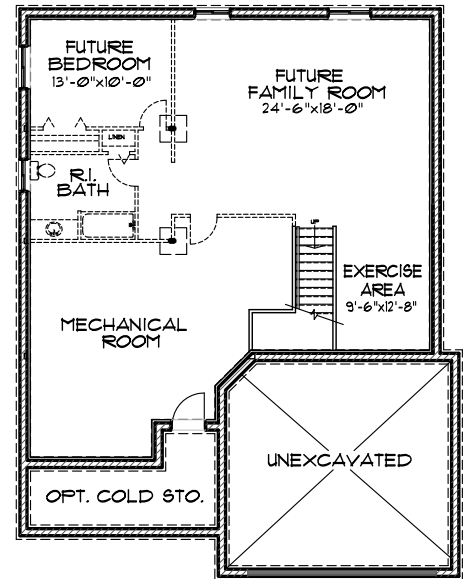
The Glasgow II

Option A

- 1410 sq.ft. -



Ground Floor Plan
40'-0" x 55'-6"



Basement Plan

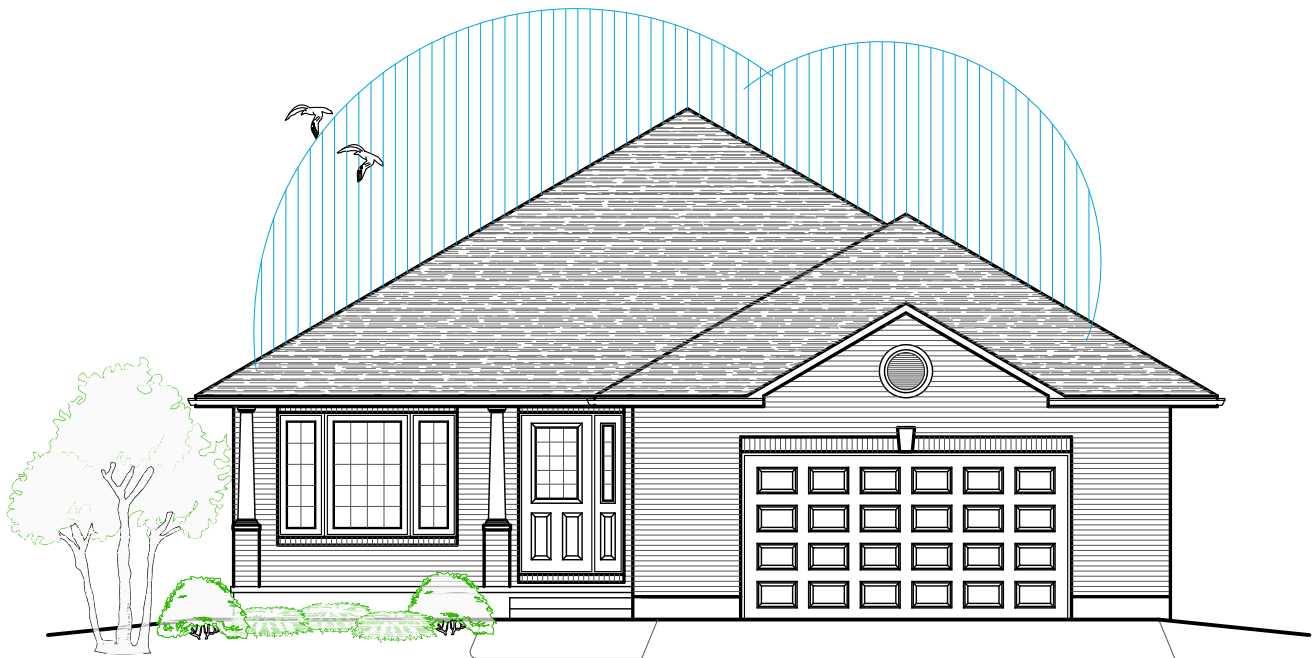
Featuring

- 2 Bedrooms
- 2 Bathrooms
- Foyer Walk-in Closet
- Covered Porch
- Oversize Double Garage
- Optional Features Available
- Cold Storage
- Covered Rear Deck



1458 Fish & Game Club Rd.
Frankford, ON K0K 2C0
Tel: (613) 398-0170 Fax: (613) 398-3297
davis.john@sympatico.ca

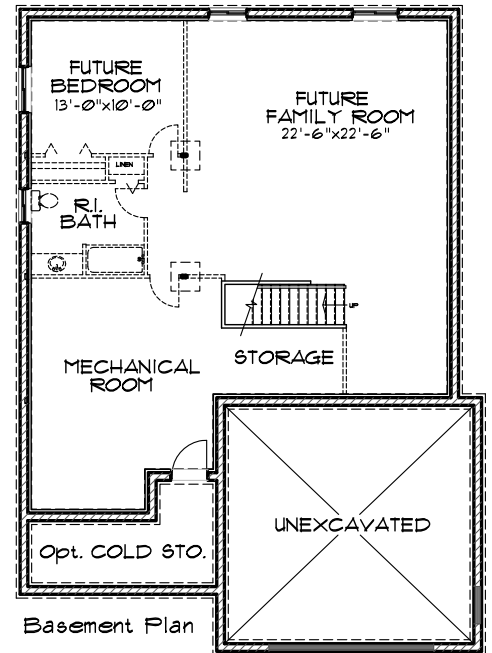
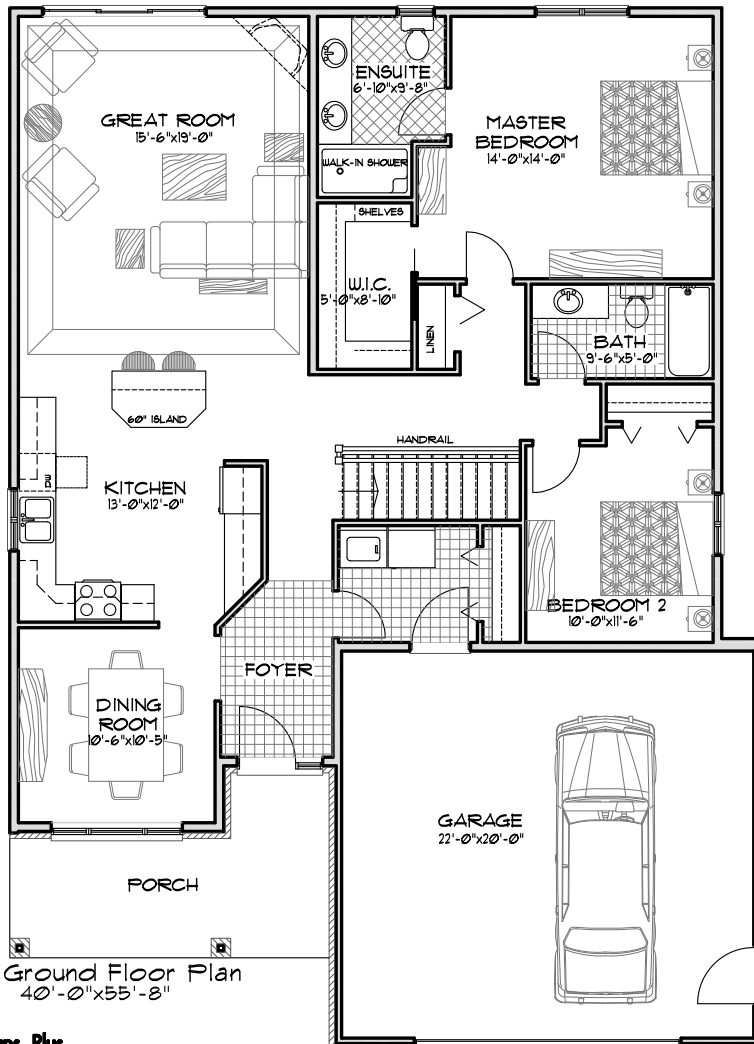
Plans by:
Designs Plus
613-961-9256
Sue Sampson
CONCEPTUAL PLANS ONLY, S.O.C.



The Glasgow II

Option B

- 1465 sq.ft. -

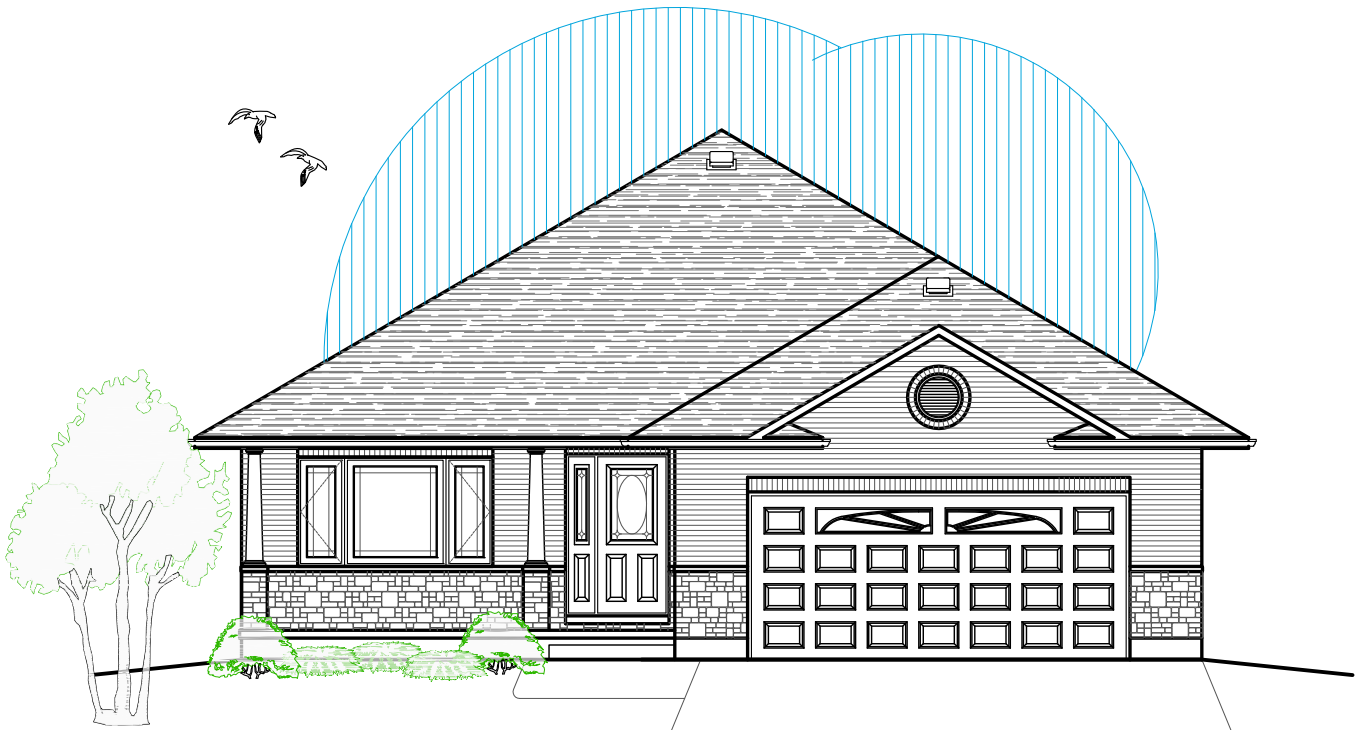


Featuring

- 2 Bedrooms
- 2 Bathrooms
- Main Floor Laundry
- Covered Porch
- Oversize Double Garage
- Optional Features Available
- Cold Storage
- Covered Rear Deck



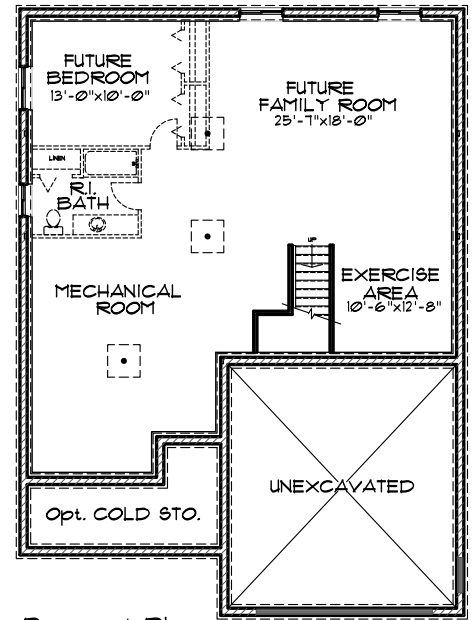
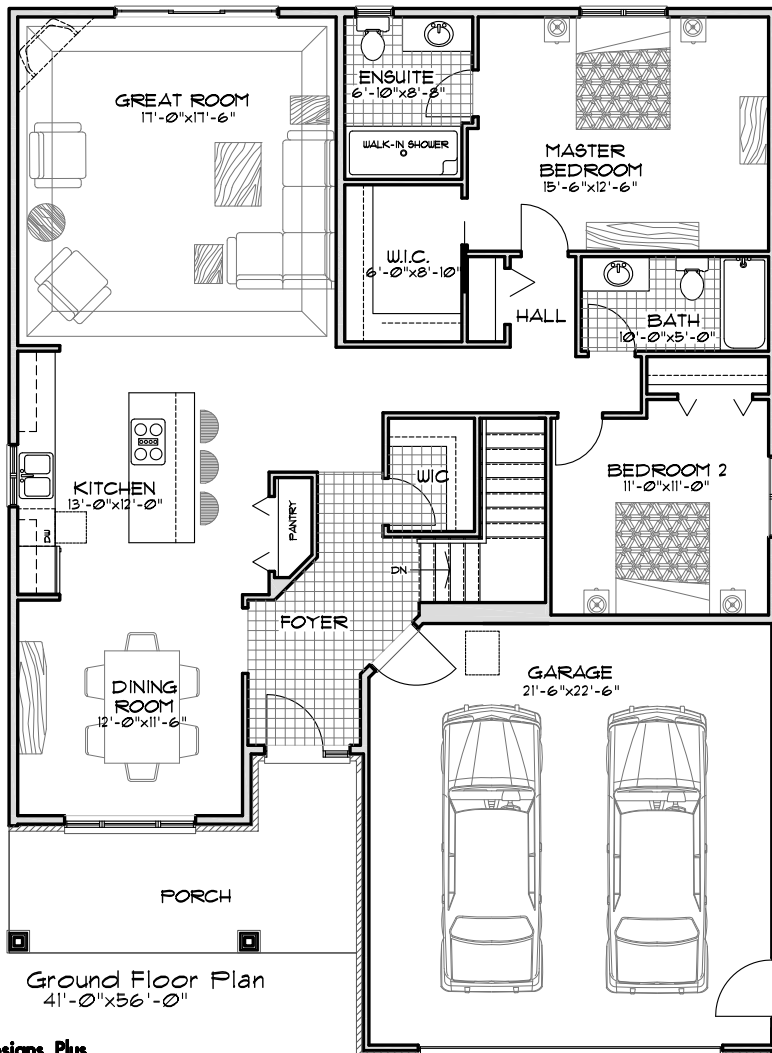
1458 Fish & Game Club Rd.
Frankford, ON K0K 2C0
Tel: (613) 398-0170 Fax: (613) 398-3297
davis.john@sympatico.ca



The Glasgow II

Option C

- 1540 sq.ft. -

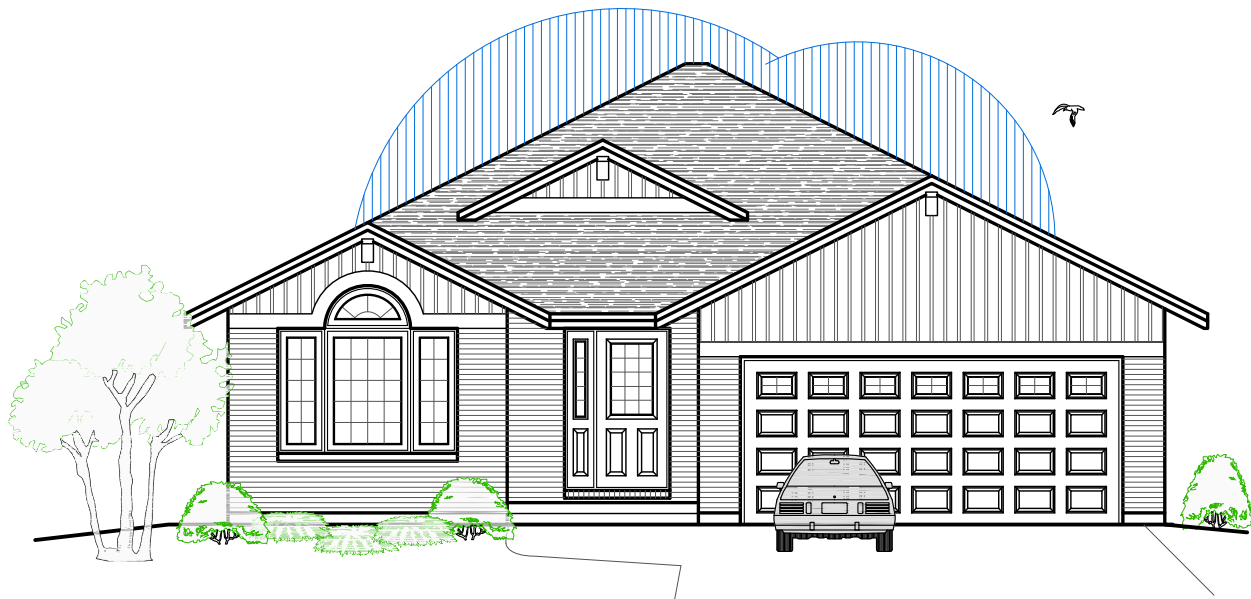


Featuring

- 2 Bedrooms
- 2 Bathrooms
- Foyer Walk-in Closet
- Covered Porch
- Oversize Double Garage
- Optional Features Available
- Cold Storage
- Covered Rear Deck

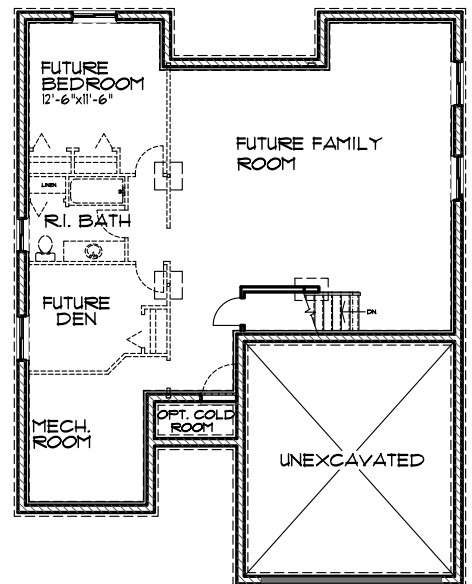
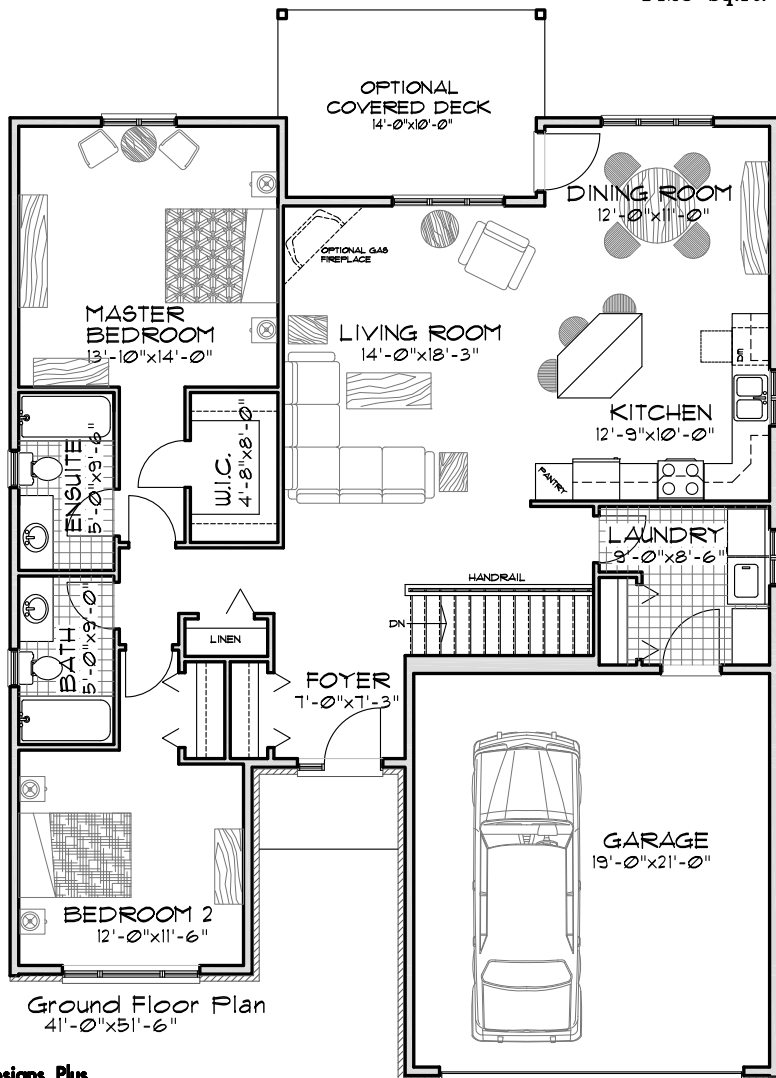


1458 Fish & Game Club Rd.
Frankford, ON K0K 2C0
Tel: (613) 398-0170 Fax: (613) 398-3297
davis.john@sympatico.ca



The Huntley II

- 1425 sq.ft. -



Featuring

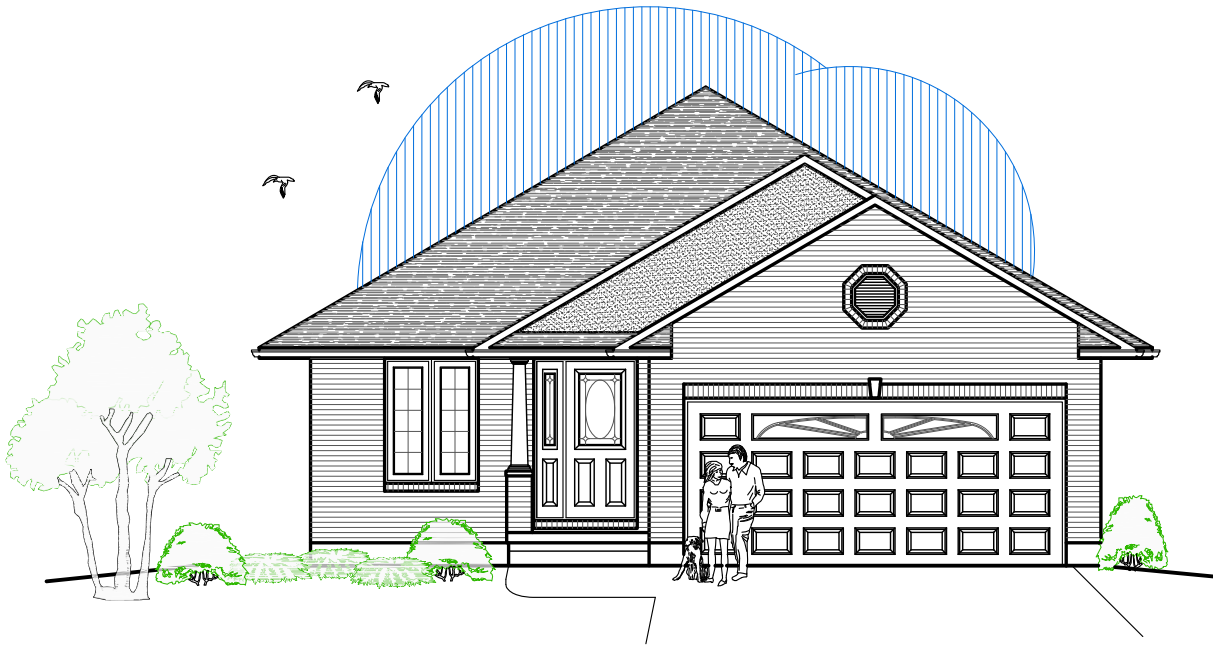
- 2 Bedrooms
- 2 Bathrooms
- Main Floor Laundry

Optional Features Available
Cold Storage
Covered Rear Deck



**DIAMOND
HOMES
BY DAVIS**

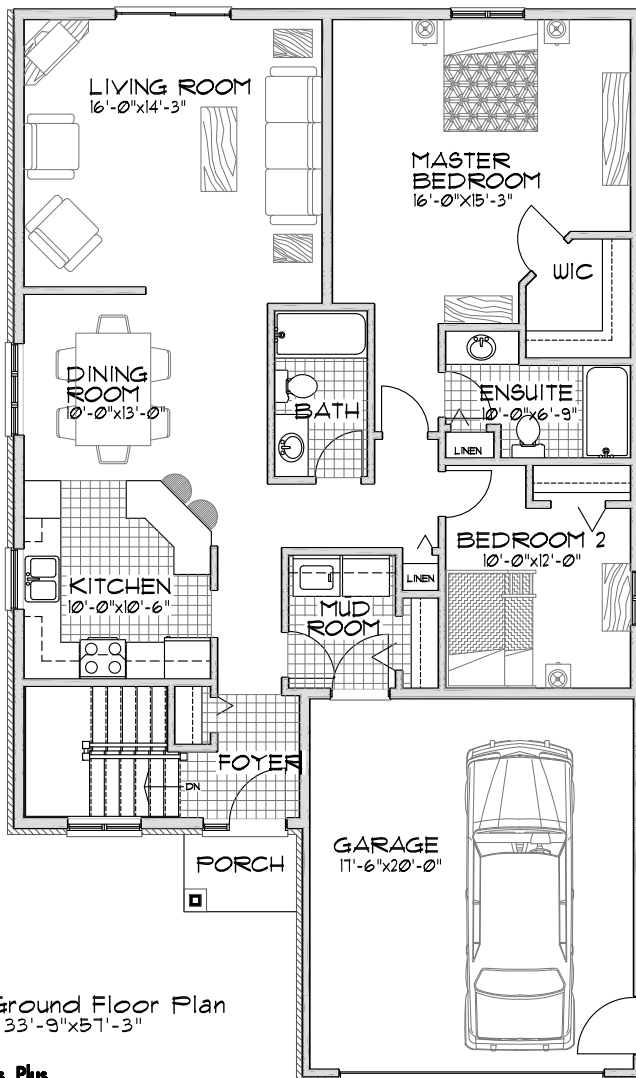
1458 Fish & Game Club Rd.
Frankford, ON K0K 2C0
Tel: (613) 398-0170 Fax: (613) 398-3297
davis.john@sympatico.ca



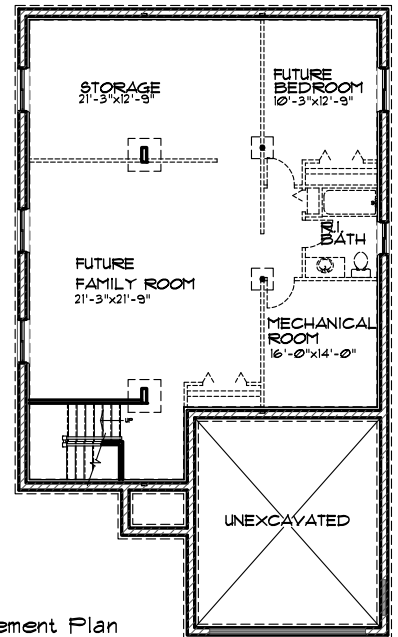
The Stonehaven II

Option A

- 1355 sq.ft. -



Ground Floor Plan
33'-9" x 51'-3"



Basement Plan

Featuring

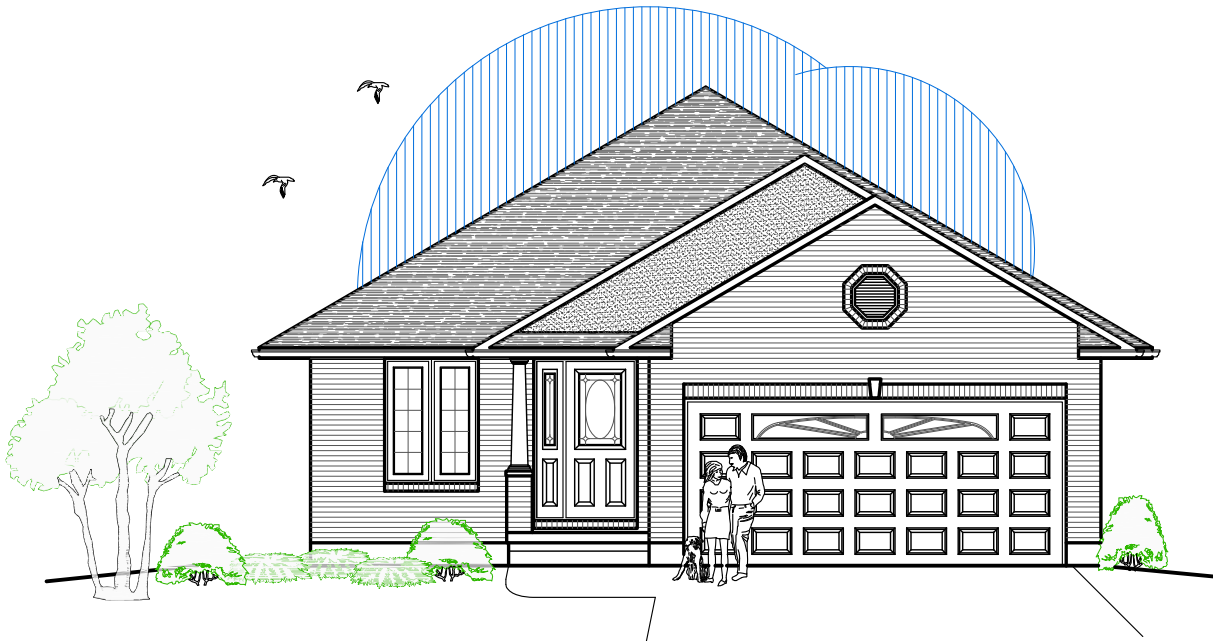
- 2 Bedrooms
- 2 Bathrooms
- Main Floor Laundry
- Covered Porch

Optional Features Available
Cold Storage
Covered Rear Deck



**DIAMOND
HOMES
BY DAVIS**

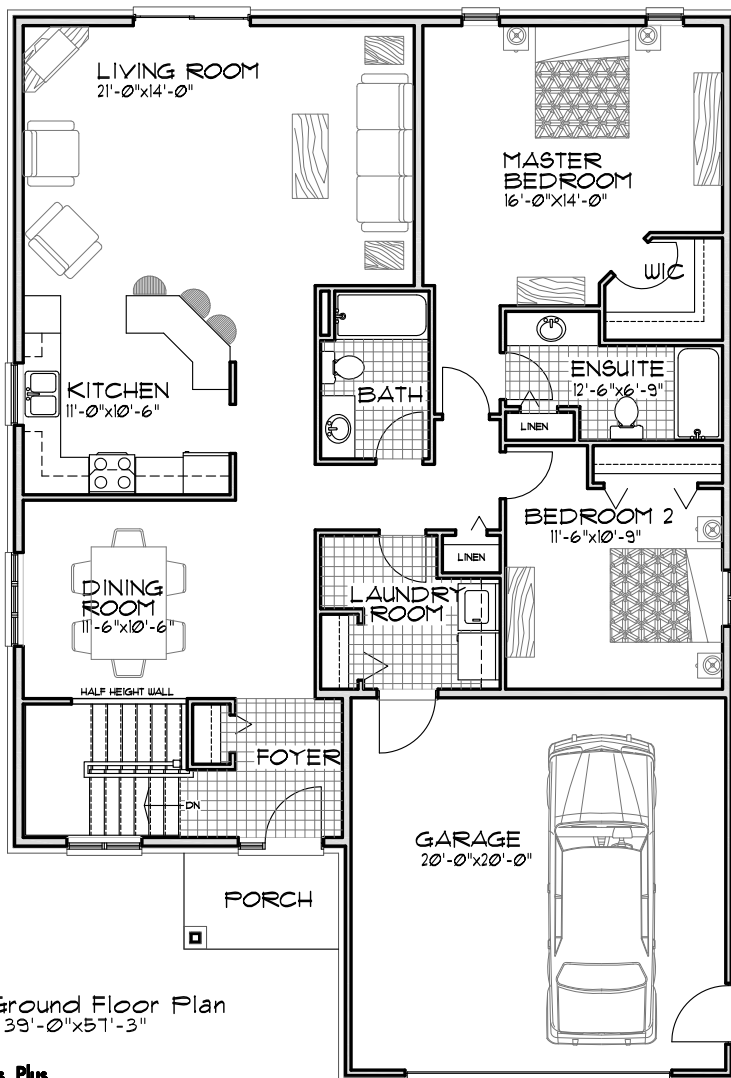
1458 Fish & Game Club Rd.
Frankford, ON K0K 2C0
Tel: (613) 398-0170 Fax: (613) 398-3297
davis.john@sympatico.ca



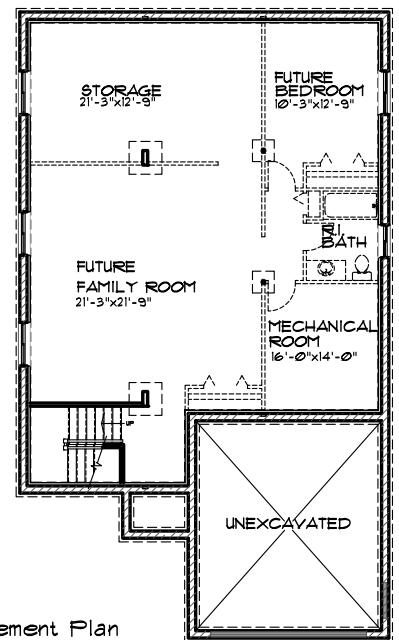
The Stonehaven II

Option B

- 1585 sq.ft. -



Ground Floor Plan
39'-0" x 57'-3"



Basement Plan

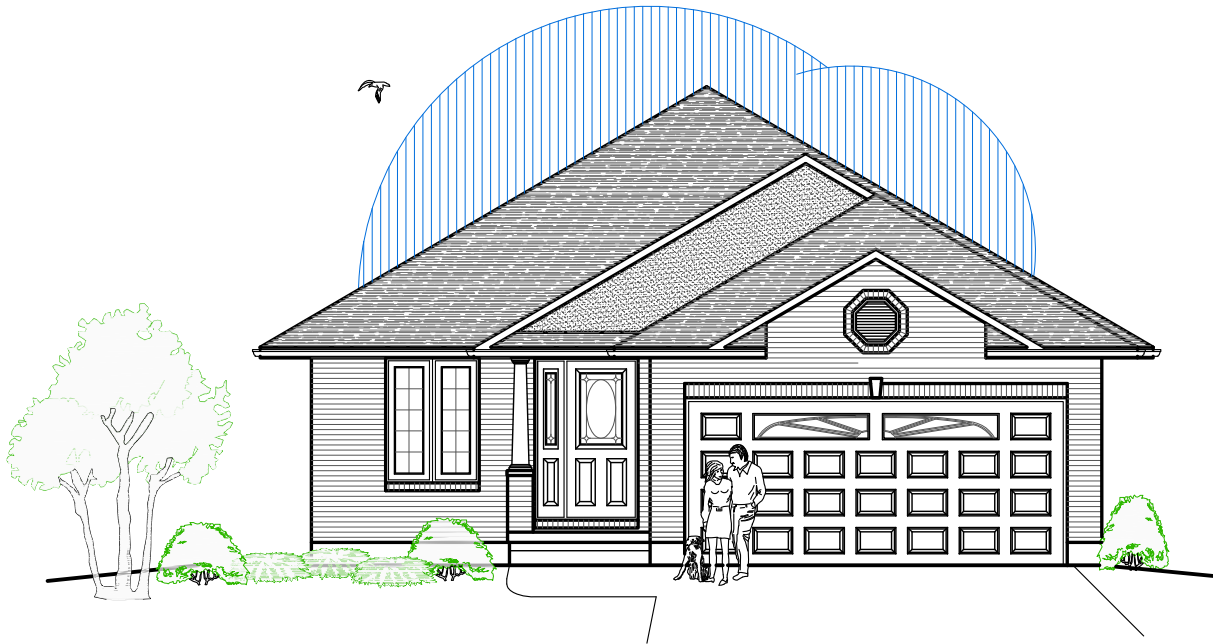
Featuring

- 2 Bedrooms
- 2 Bathrooms
- Main Floor Laundry
- Covered Porch
- Dining Room Option to Den or Bedroom 3

Optional Features Available
Cold Storage
Covered Rear Deck

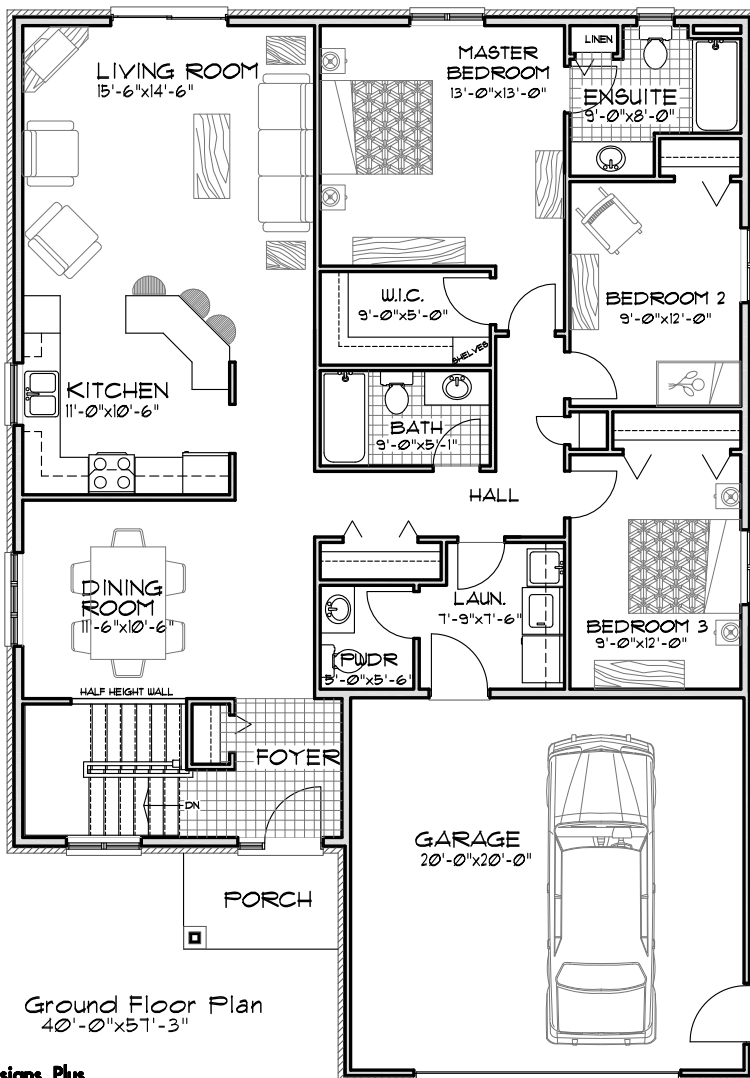


1458 Fish & Game Club Rd.
Frankford, ON K0K 2C0
Tel: (613) 398-0170 Fax: (613) 398-3297
davis.john@sympatico.ca

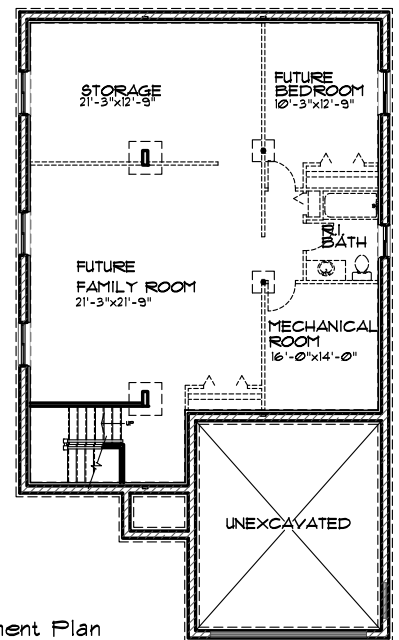


The Stonehaven

- 1620 sq.ft. -



Ground Floor Plan
40'-0" x 51'-3"



Basement Plan

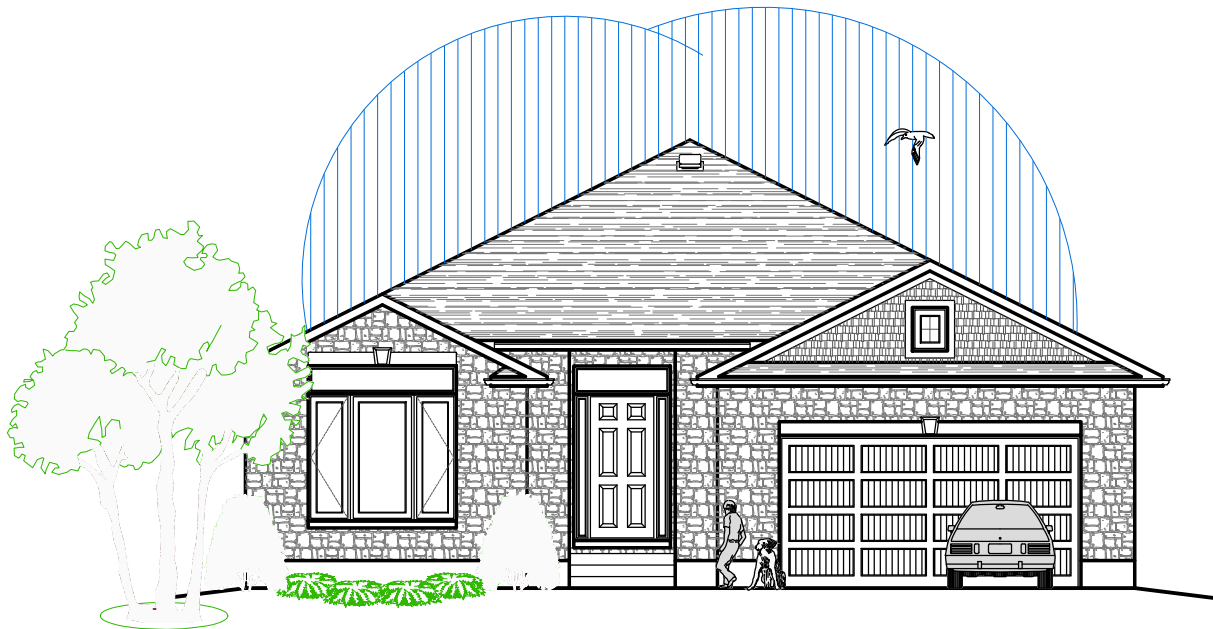
Featuring

- 3 Bedrooms
- 2½ Bathrooms
- Main Floor Laundry
- Covered Porch
- Dining Room Option to Den or Bedroom 4

Optional Features Available
Cold Storage
Covered Rear Deck



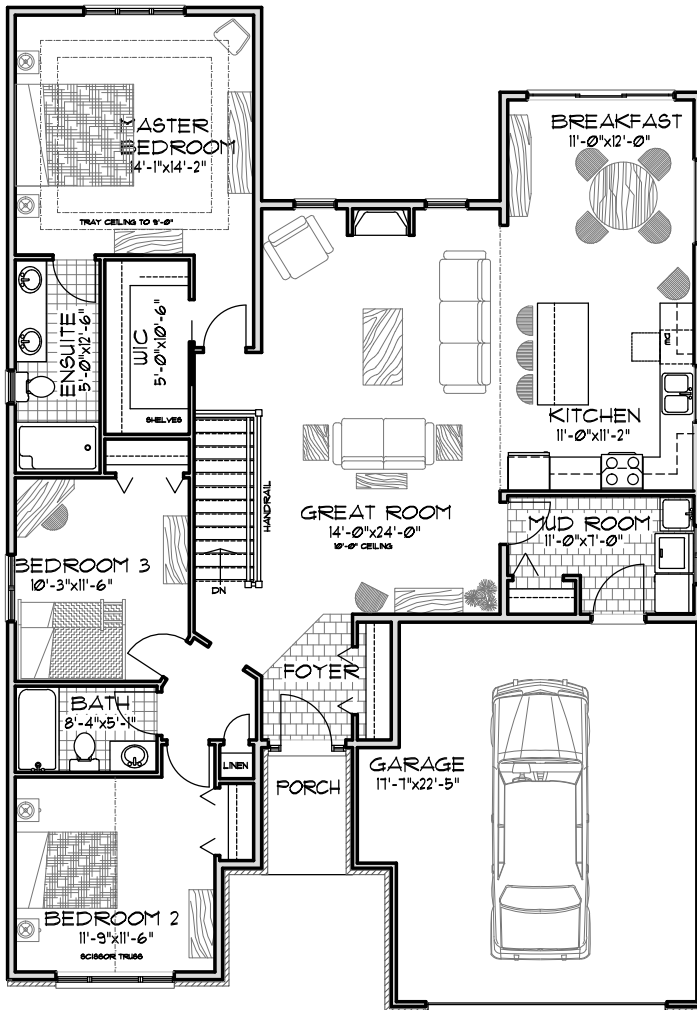
1458 Fish & Game Club Rd.
Frankford, ON K0K 2C0
Tel: (613) 398-0170 Fax: (613) 398-3297
davis.john@sympatico.ca



Front Elevation

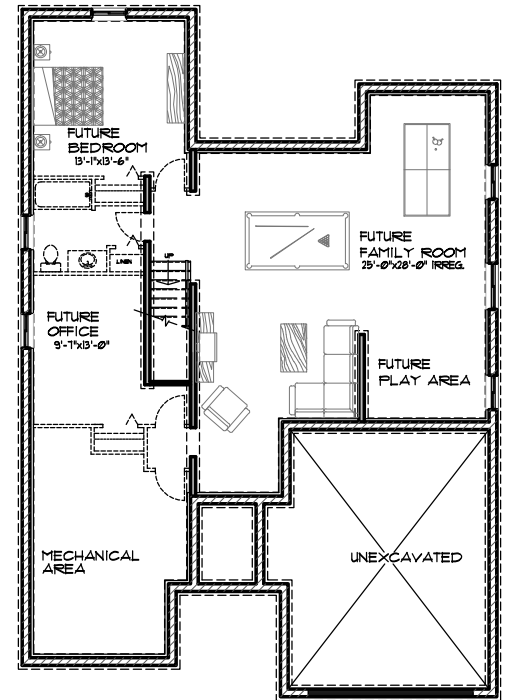
The Hickory

- 1642 sq.ft. -



Ground Floor Plan

41'-0" x 59'-4"



Basement Plan

- 3 Bedrooms
- 2 Bathrooms
- Main Floor Laundry
- 10' Ceiling Living Room
- Covered Porch

- Optional Features Available
- Cold Storage
- Covered Rear Deck



Tel: (613) 398-0170 Fax: (613) 398-3297
 davis.john@sympatico.ca