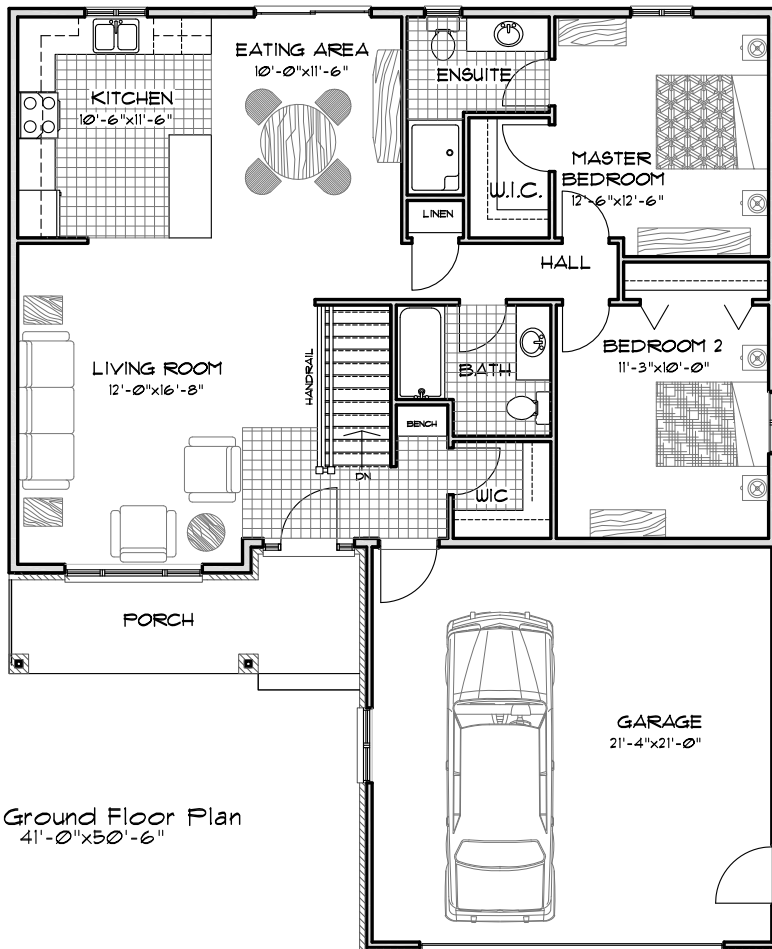


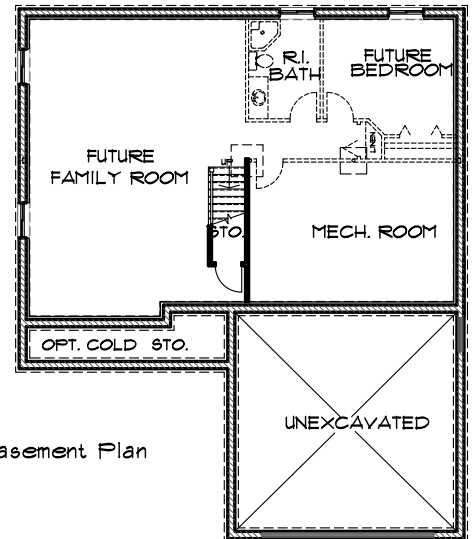
The Aberdeen II

Option A

- 1205 sq.ft. -



Ground Floor Plan
41'-0" x 50'-6"



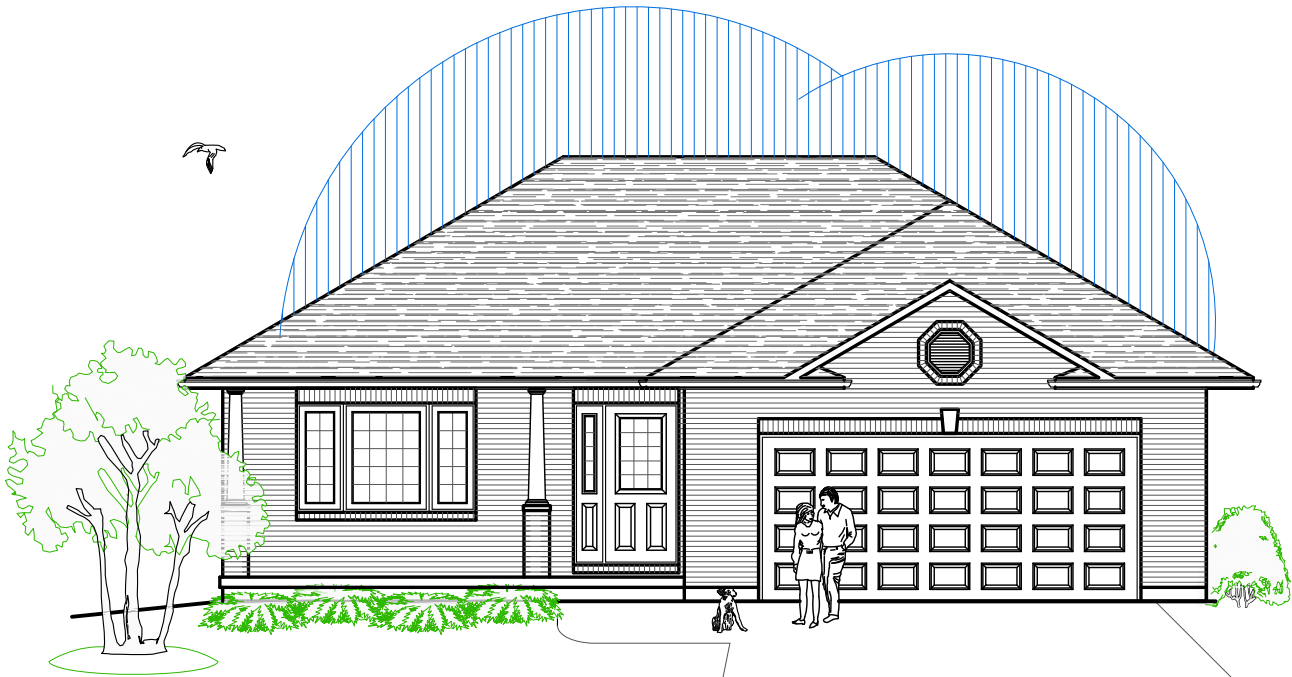
Basement Plan

Featuring

- 2 Bedrooms
- 2 Bathrooms
- Foyer Walk-in Closet
- Covered Porch
- Oversize Double Garage
- Optional Features Available
- Cold Storage
- Covered Rear Deck



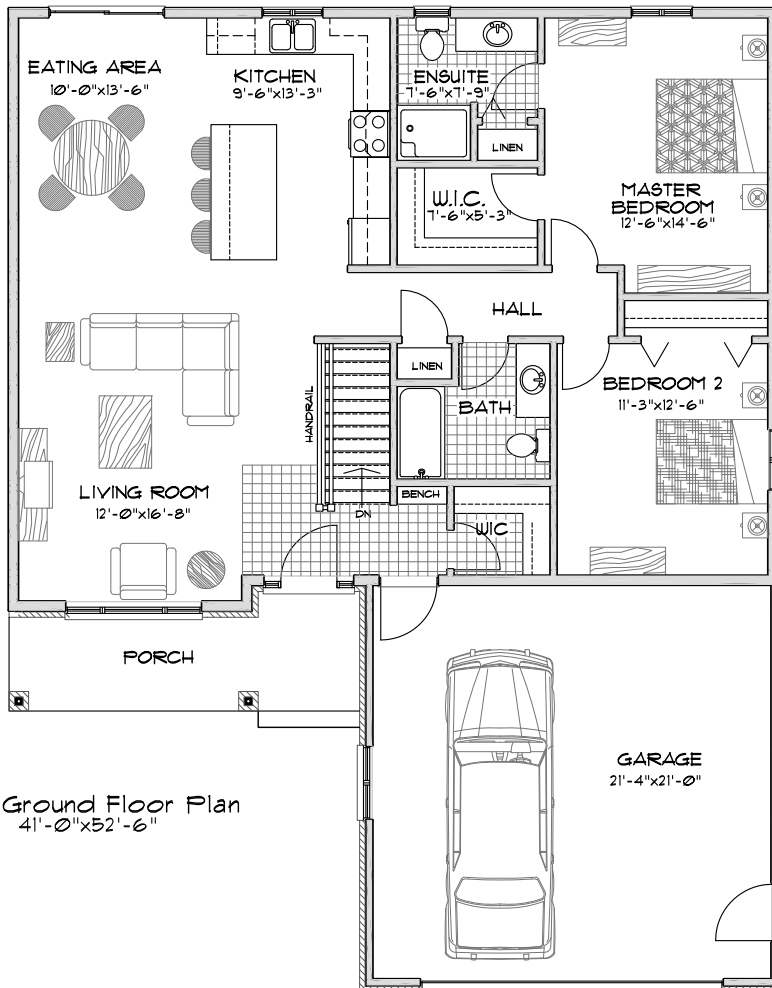
1458 Fish & Game Club Rd.
Frankford, ON K0K 2C0
Tel: (613) 398-0170 Fax: (613) 398-3297
davis.john@sympatico.ca



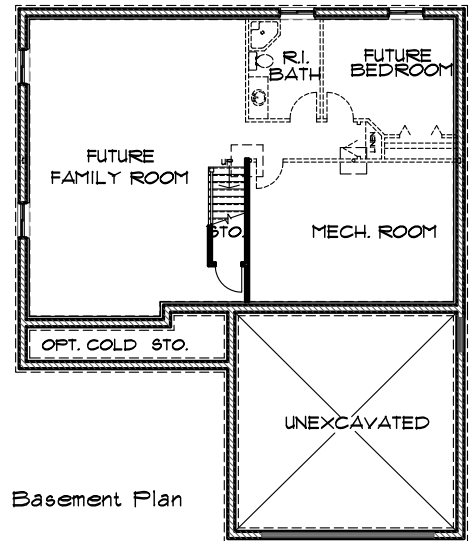
The Aberdeen II

Option B

- 1285 sq.ft. -



Ground Floor Plan
41'-0" x 52'-6"



Basement Plan

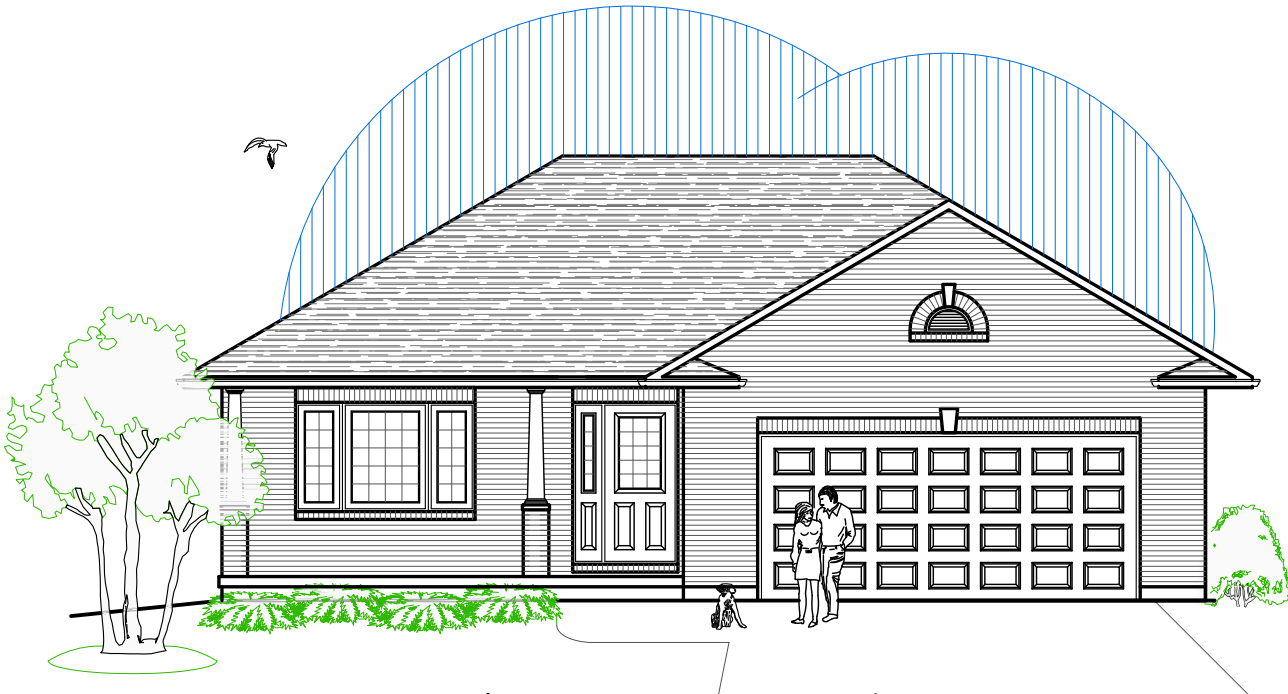
Featuring

- 2 Bedrooms
- 2 Bathrooms
- Foyer Walk-in Closet
- Covered Porch
- Oversize Double Garage
- Optional Features Available
- Cold Storage
- Covered Rear Deck



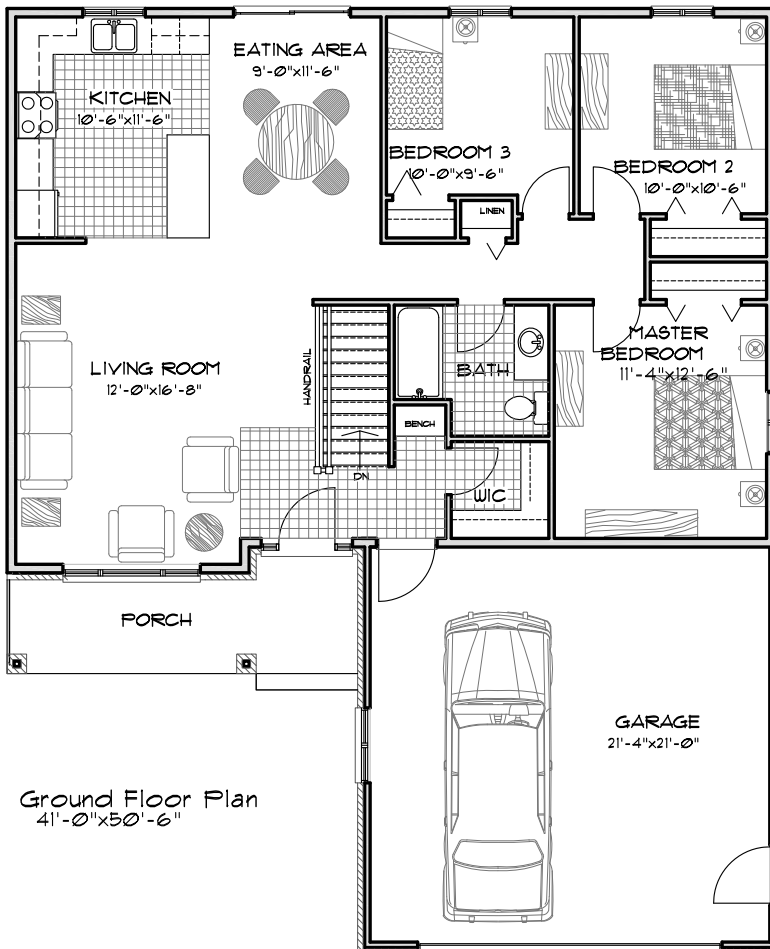
**DIAMOND
HOMES
BY DAVIS**

1458 Fish & Game Club Rd.
Frankford, ON K0K 2C0
Tel: (613) 398-0170 Fax: (613) 398-3297
davis.john@sympatico.ca

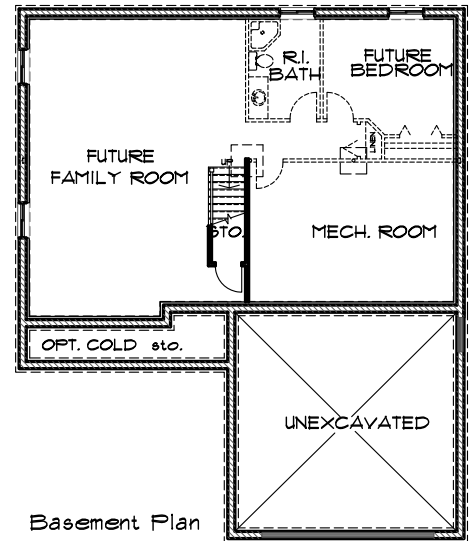


The Aberdeen

- 1205 sq.ft. -



Ground Floor Plan
41'-0" x 50'-6"



Basement Plan

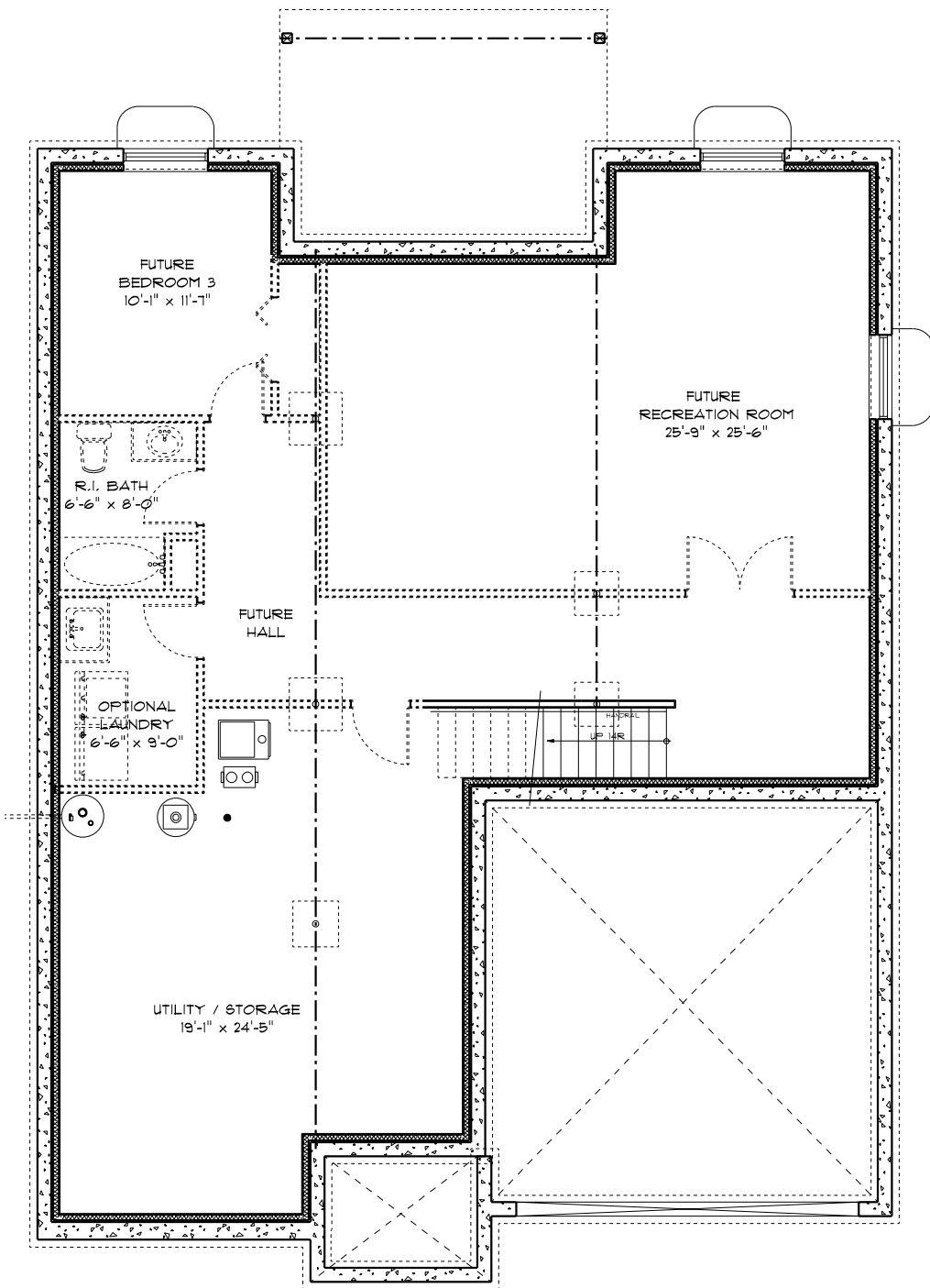
Featuring

- 3 Bedrooms
- 1 Bathroom
- Foyer Walk-in Closet
- Covered Porch
- Oversize Double Garage
- Optional Features Available
- Cold Storage
- Covered Rear Deck

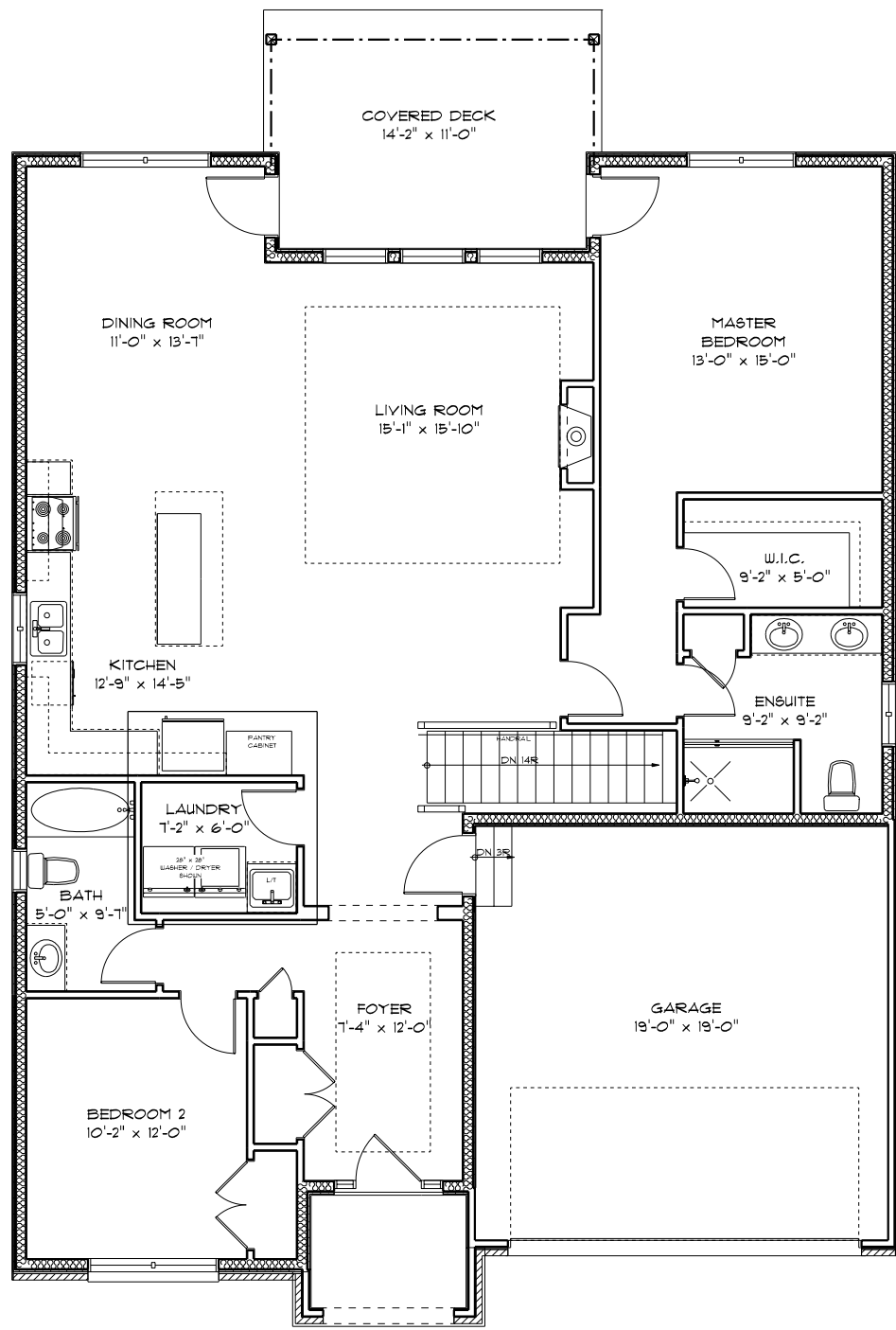




FRONT ELEVATION

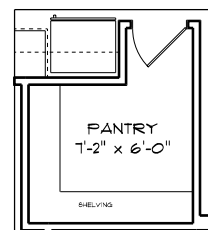


FOUNDATION PLAN



MAIN FLOOR PLAN

TOTAL LIVING AREA = 1,612.2 SQ. FT.
TOTAL GARAGE AREA = 382.1 SQ. FT.



OPTIONAL
MAIN FLOOR
PANTRY



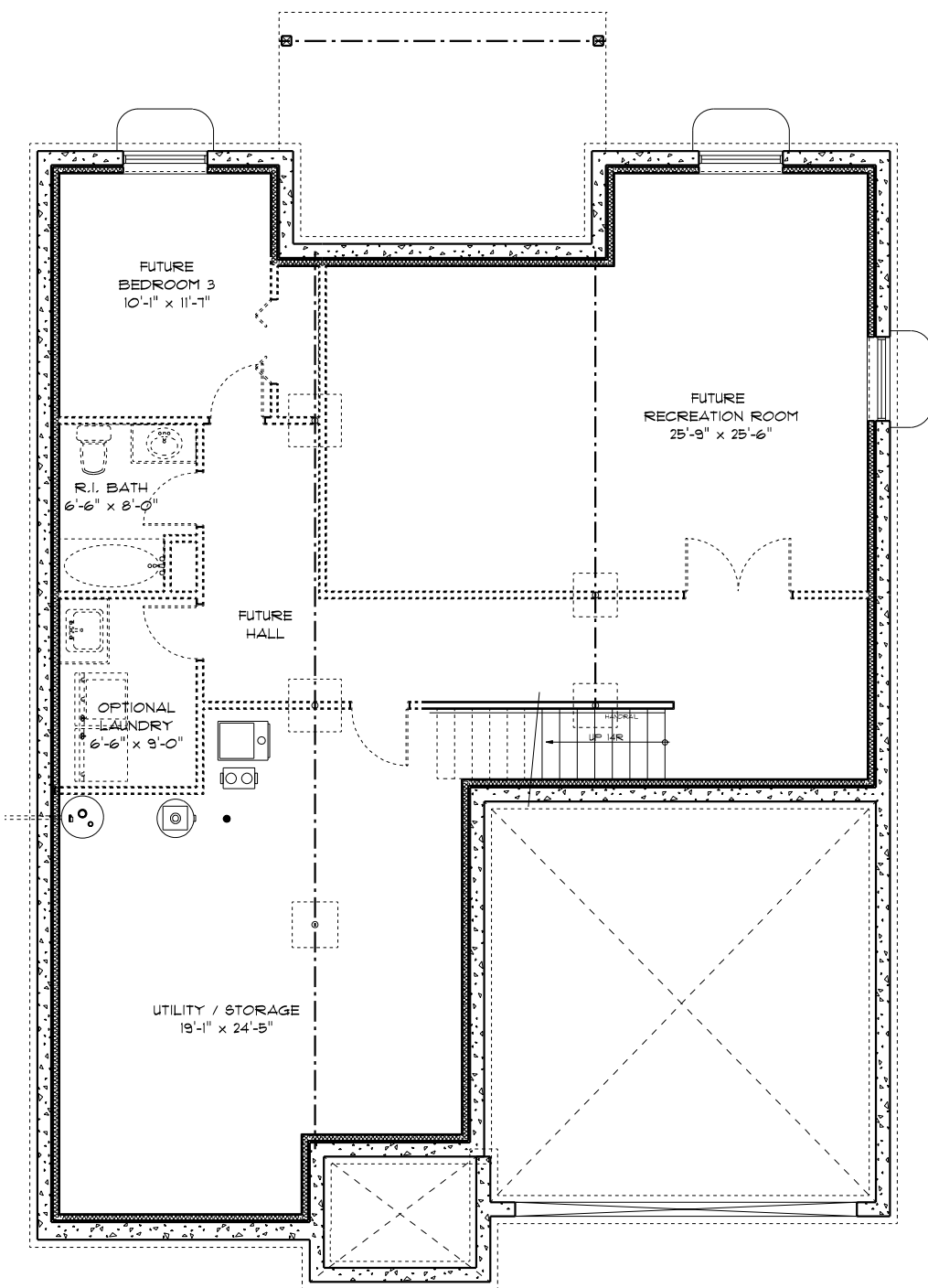
REAR ELEVATION

THE ADMIRAL

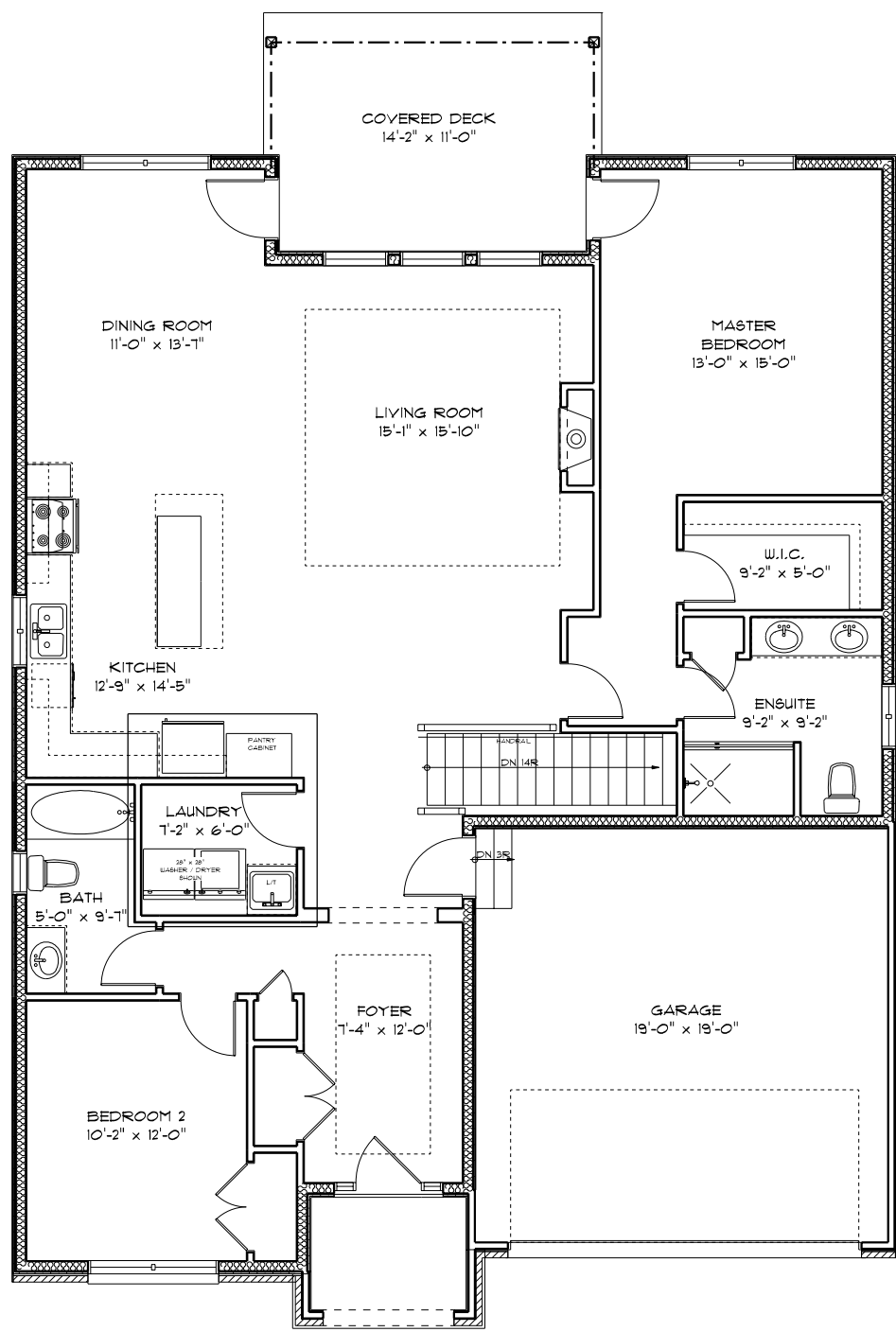
THIS IS A RENDERED DRAWING OF THE BUILDING.
CONSTRUCTION OF BUILDING MAY NOT BE EXACT.



FRONT ELEVATION

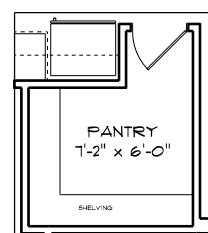


FOUNDATION PLAN



MAIN FLOOR PLAN

TOTAL LIVING AREA = 1,612.2 SQ. FT.
TOTAL GARAGE AREA = 382.1 SQ. FT.



OPTIONAL MAIN FLOOR PANTRY

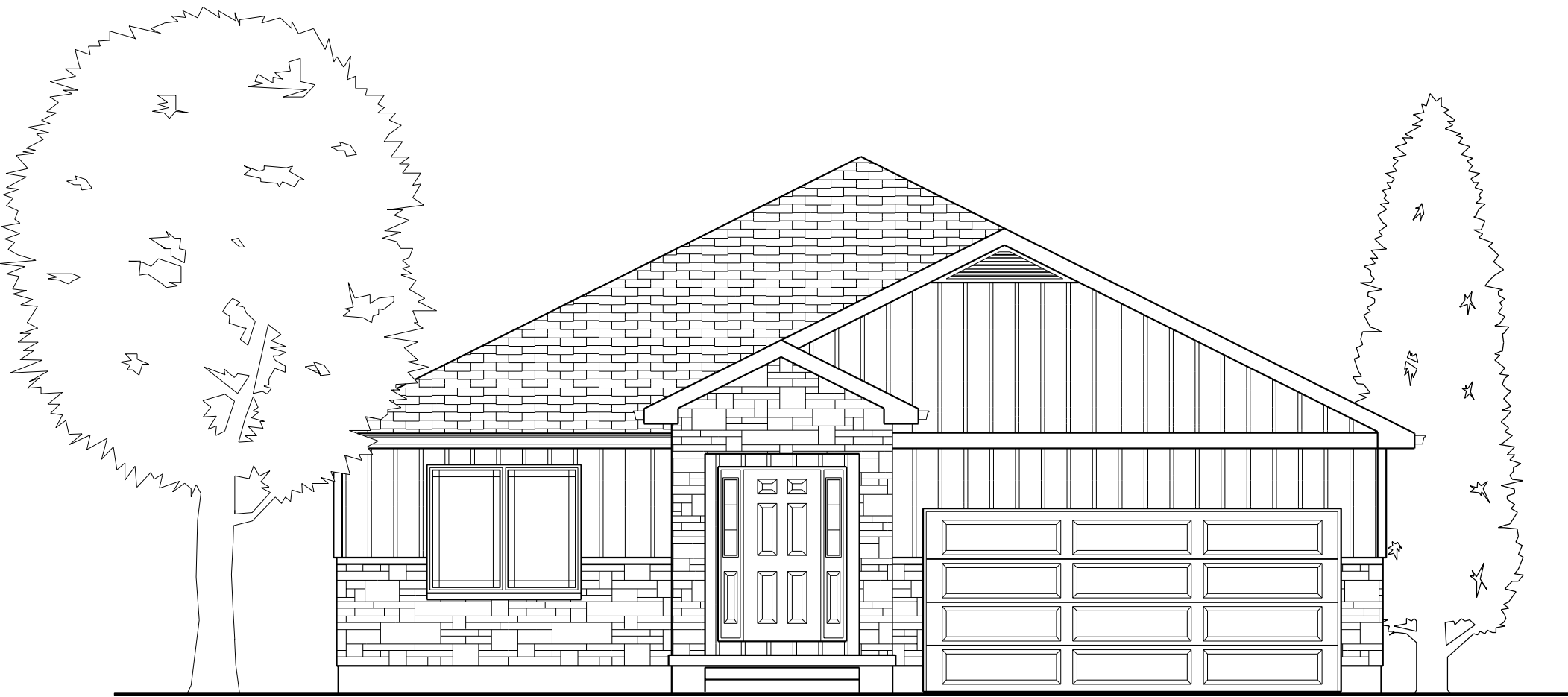


REAR ELEVATION

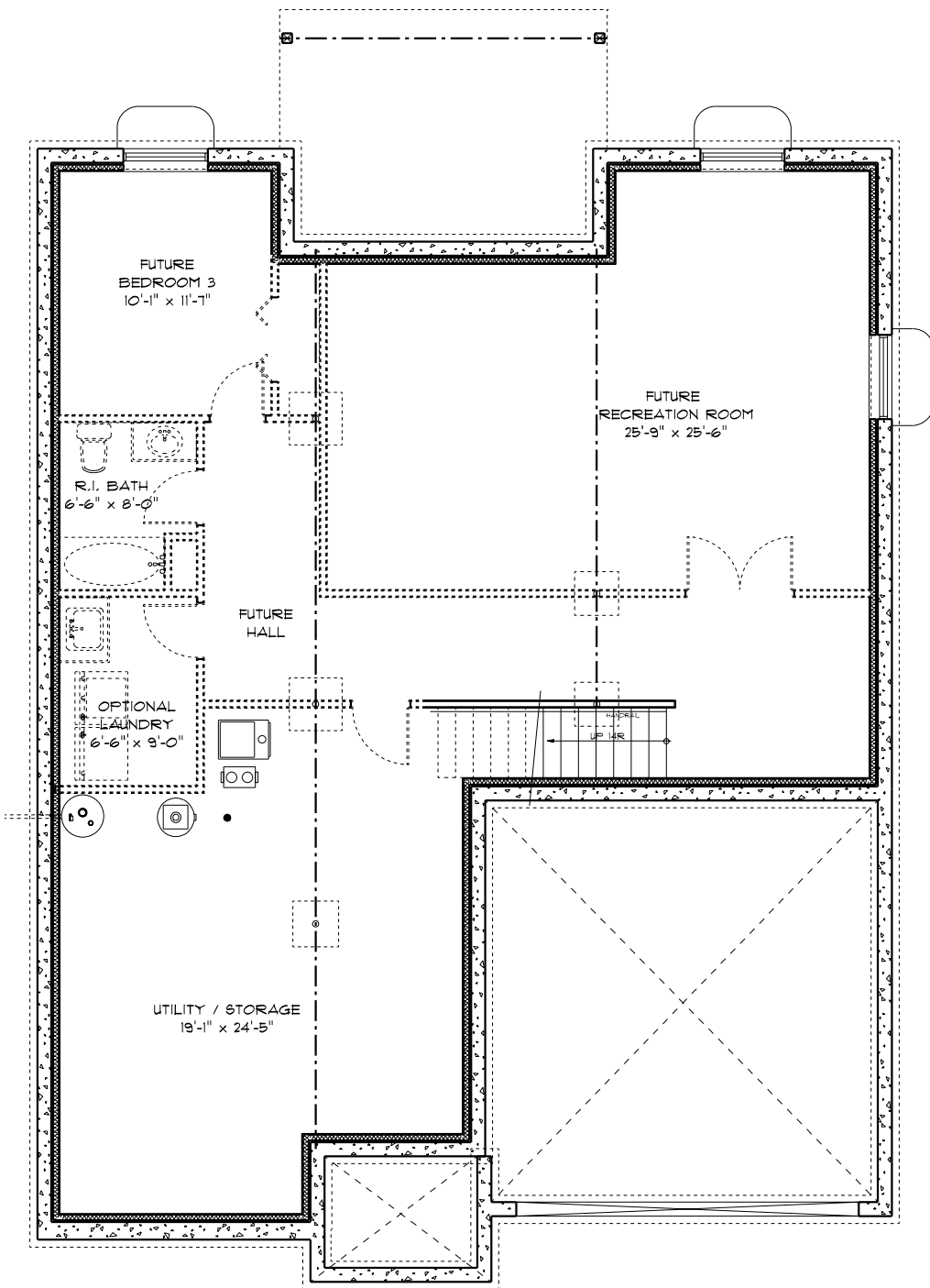
THE ADMIRAL

ROOF OPTION #2

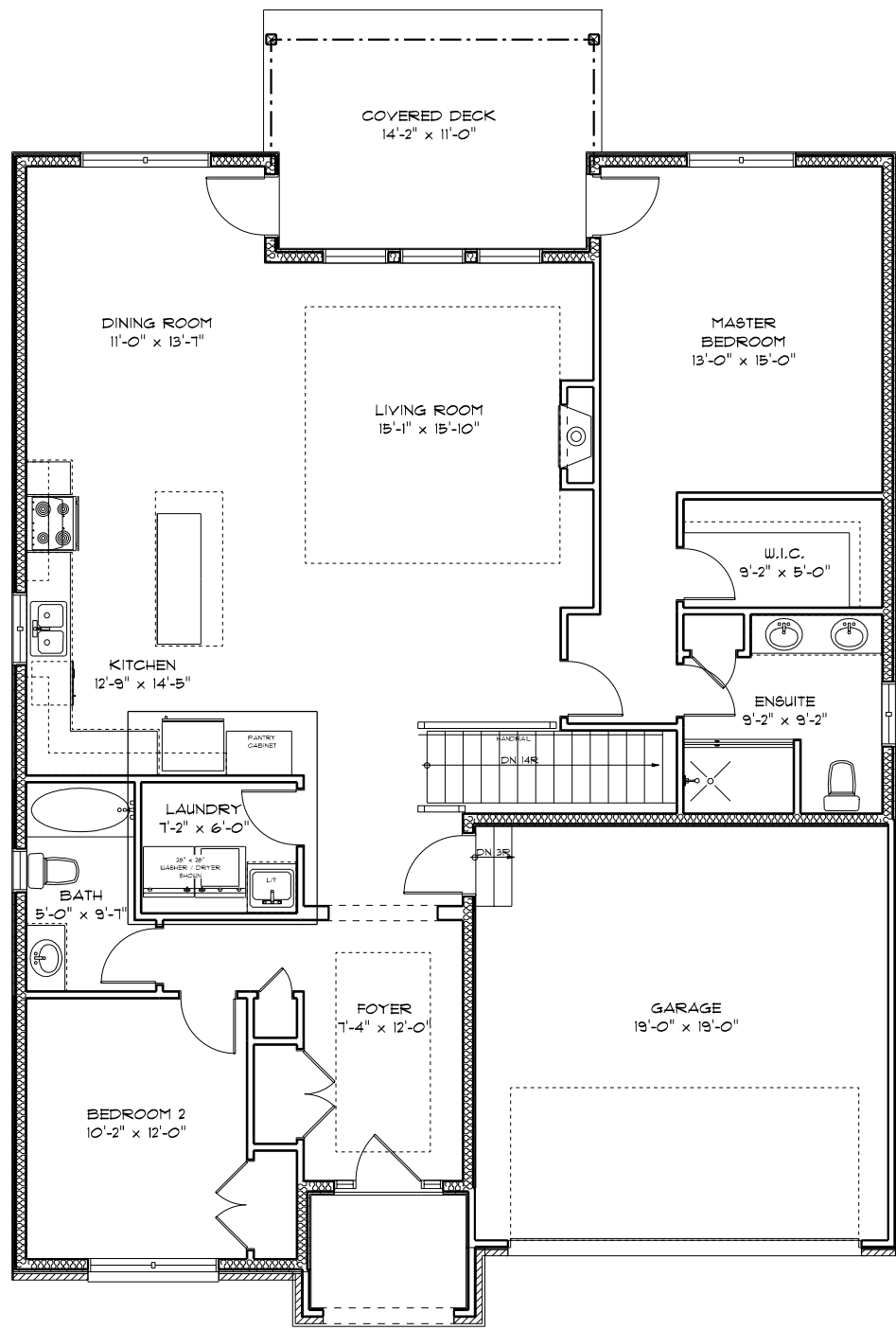
THIS IS A RENDERED DRAWING OF THE BUILDING.
CONSTRUCTION OF BUILDING MAY NOT BE EXACT.



FRONT ELEVATION

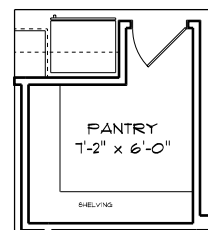


FOUNDATION PLAN



MAIN FLOOR PLAN

TOTAL LIVING AREA = 1,612.2 SQ. FT.
 TOTAL GARAGE AREA = 382.1 SQ. FT.



OPTIONAL
 MAIN FLOOR
 PANTRY

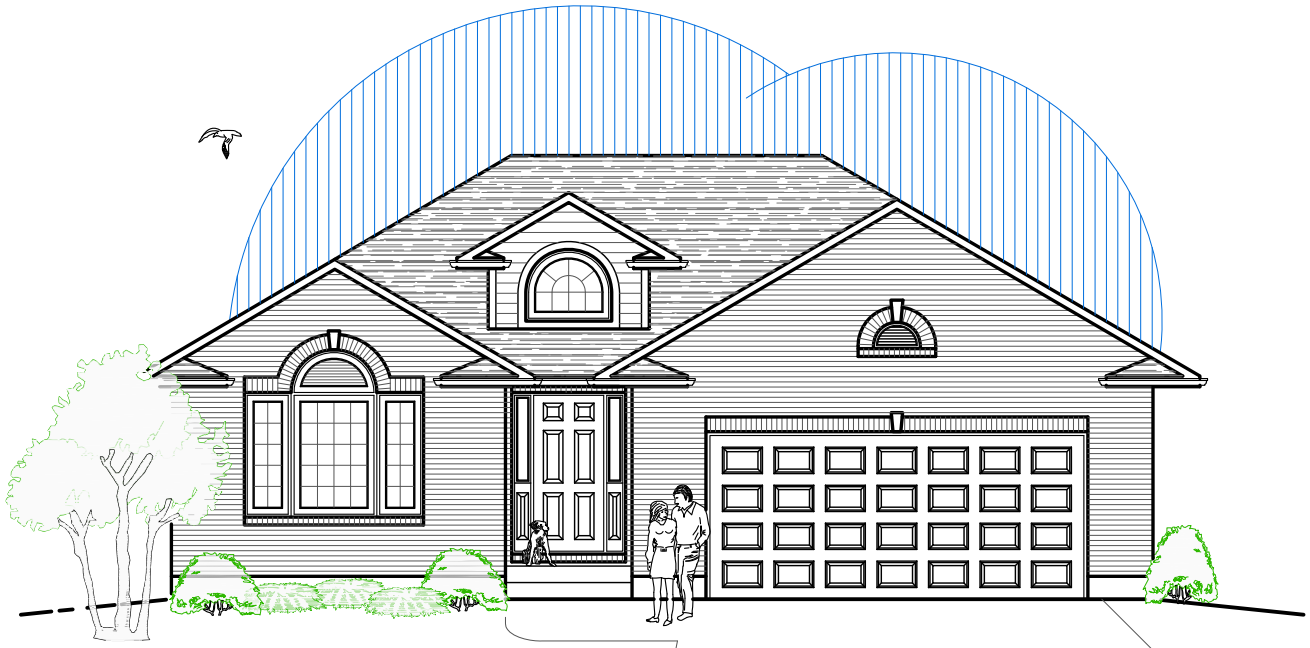


REAR ELEVATION

THE ADMIRAL

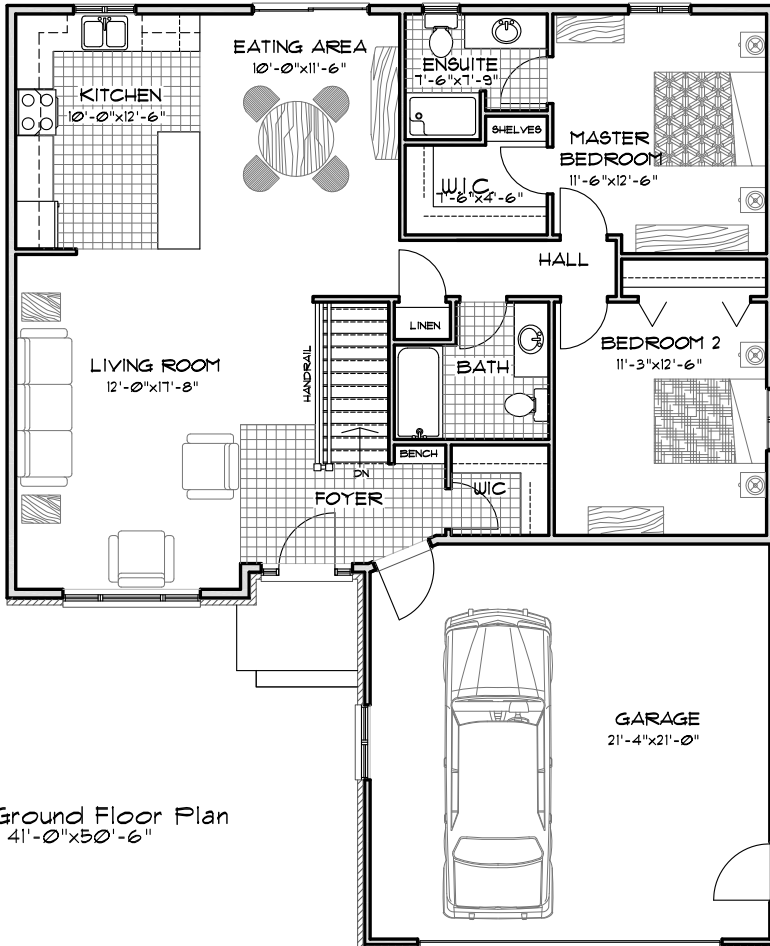
ROOF OPTION #3

THIS IS A RENDERED DRAWING OF THE BUILDING.
 CONSTRUCTION OF BUILDING MAY NOT BE EXACT.

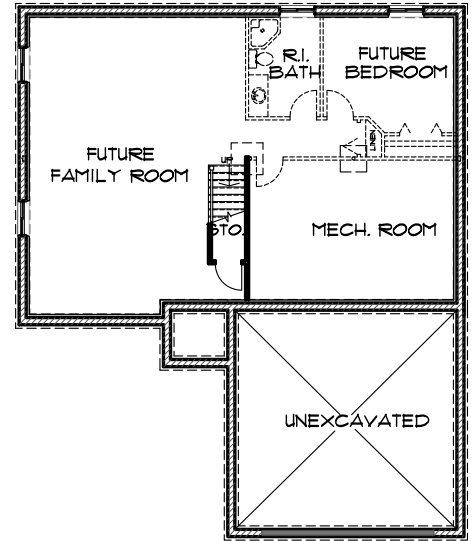


The Bellantrae II

- 1235 sq.ft. -



Ground Floor Plan
41'-0" x 50'-6"



Basement Plan

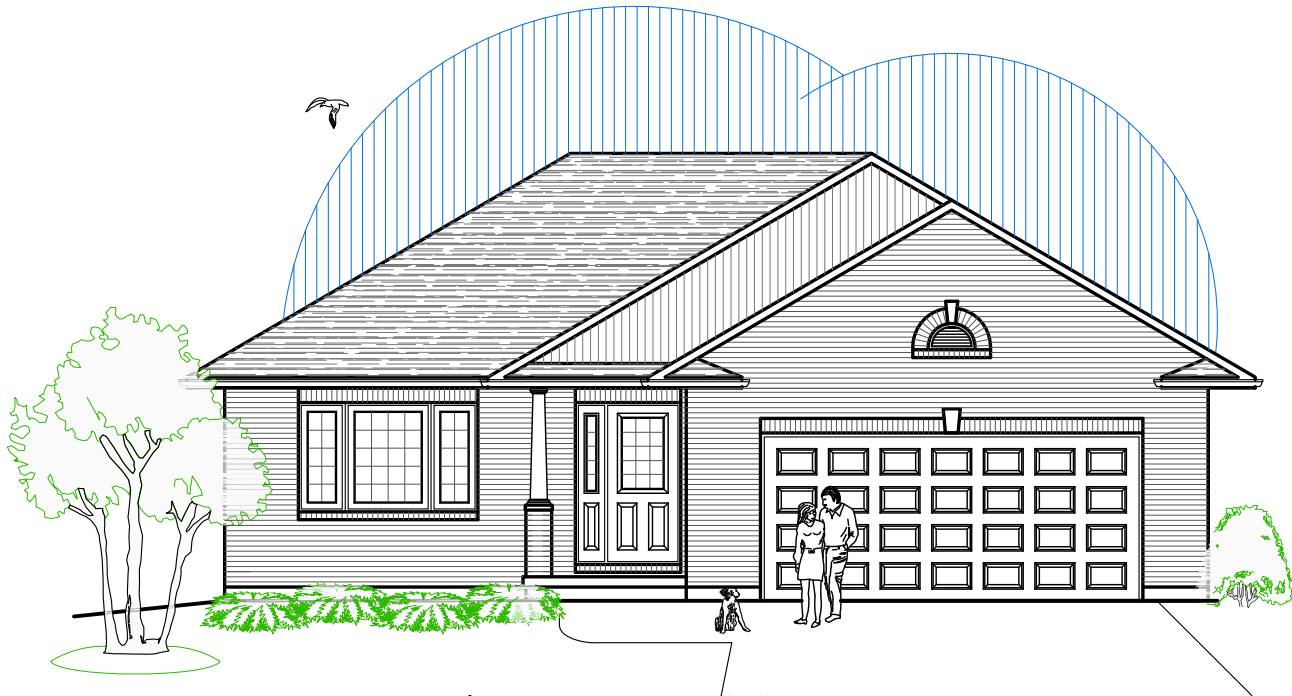
Featuring

- 2 Bedrooms
- 2 Bathrooms
- Foyer Walk-In Closet
- Oversize Double Garage

Optional Features Available
Cold Storage
Covered Rear Deck

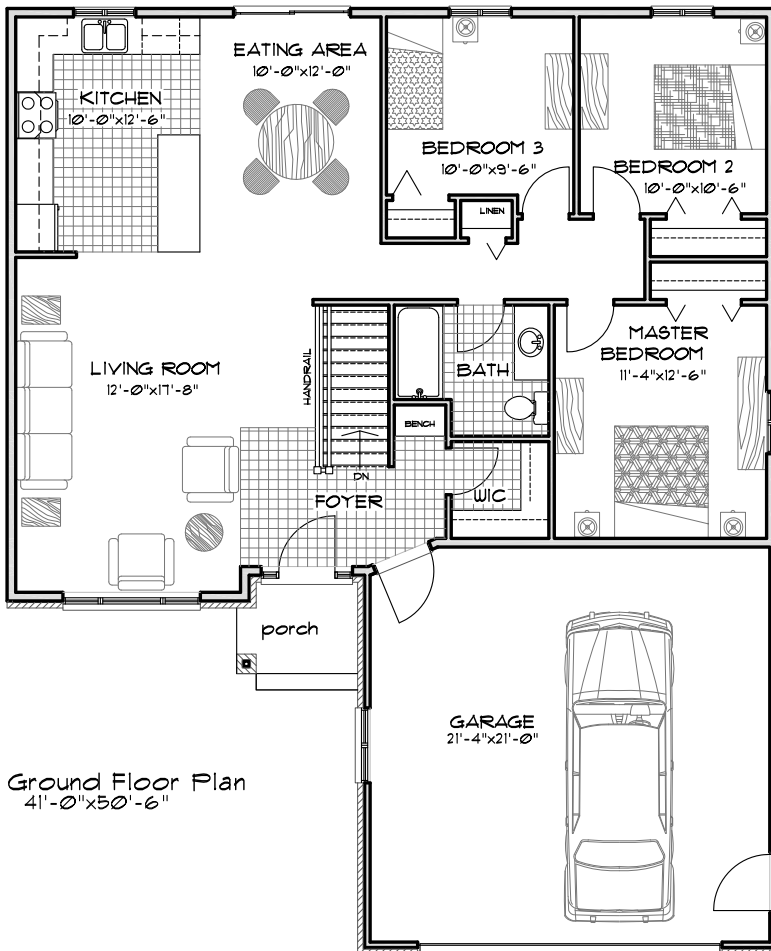


1458 Fish & Game Club Rd.
Frankford, ON K0K 2C0
Tel: (613) 398-0170 Fax: (613) 398-3297
davis.john@sympatico.ca

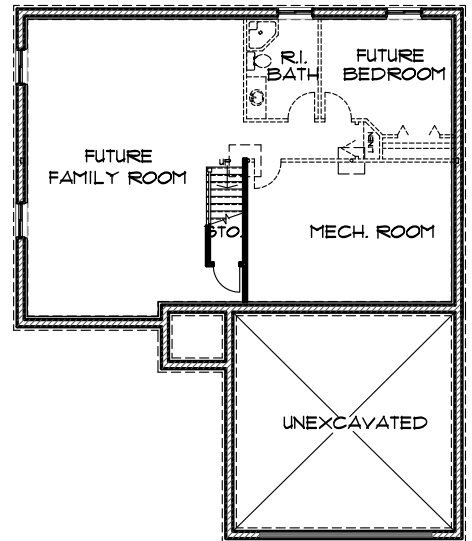


The Bellantrae

- 1235 sq.ft. -



Ground Floor Plan
41'-0" x 50'-6"



Basement Plan

Featuring

- 3 Bedrooms
- 1 Bathroom
- Foyer Walk-in Closet
- Covered Porch
- Oversize Double Garage
- Optional Features Available
- Cold Storage
- Covered Rear Deck

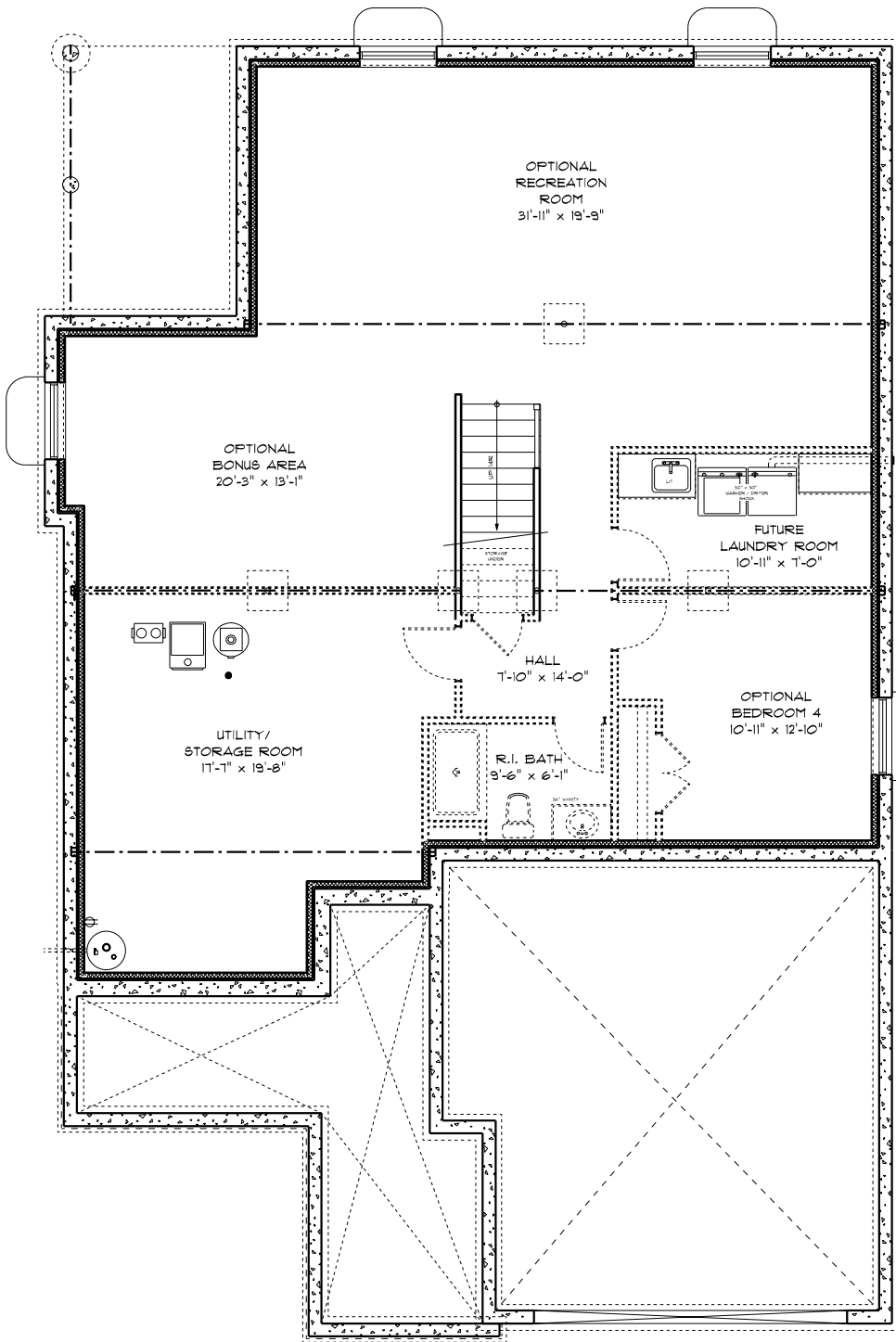


**DIAMOND
HOMES
BY DAVIS**

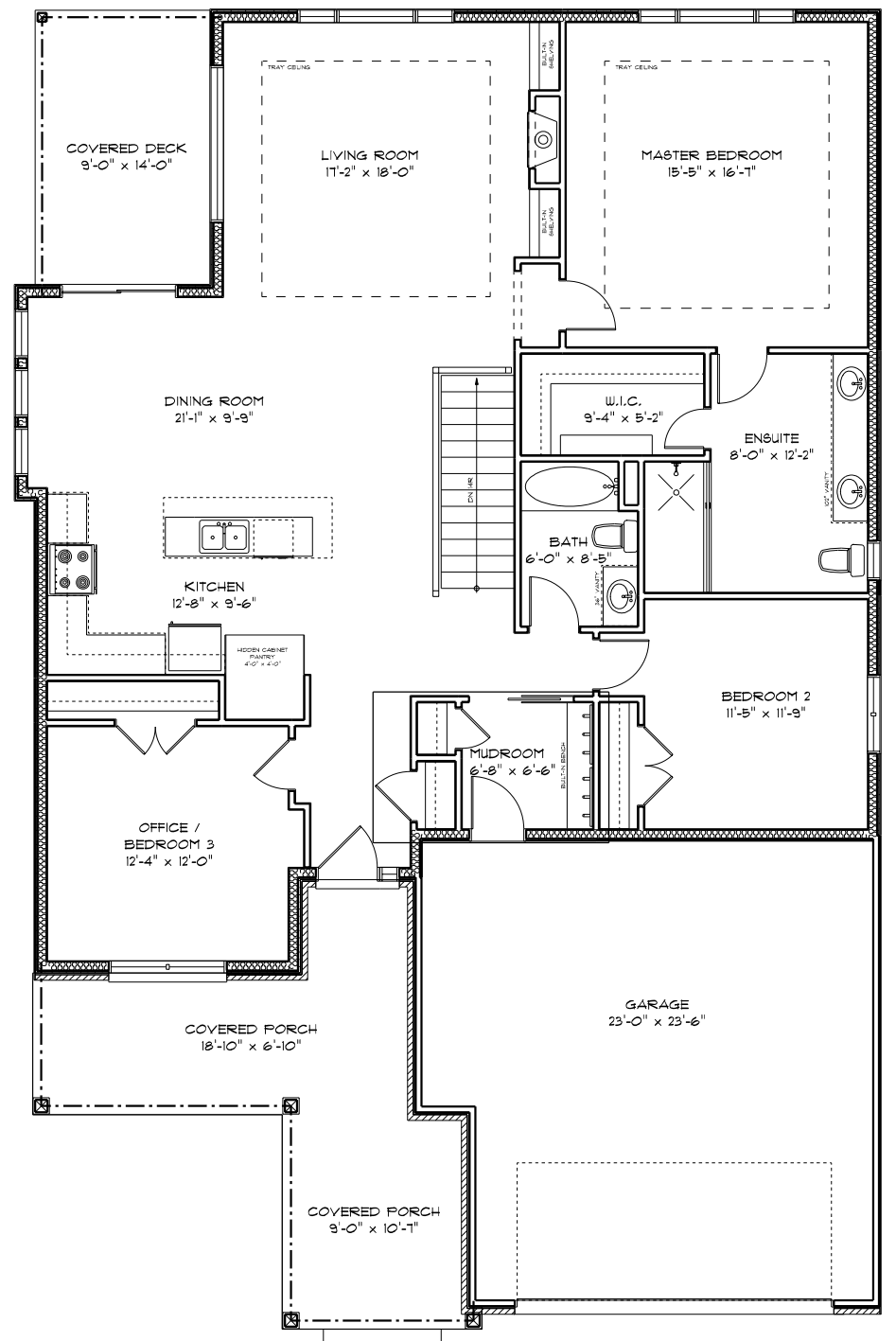
1458 Fish & Game Club Rd.
Frankford, ON K0K 2C0
Tel: (613) 398-0170 Fax: (613) 398-3297
davis.john@sympatico.ca



FRONT ELEVATION

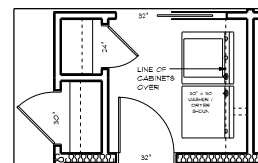


FOUNDATION PLAN

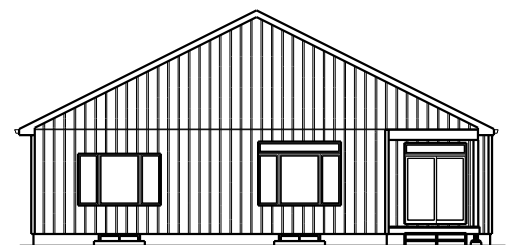


MAIN FLOOR PLAN

TOTAL LIVING AREA = 1,824.5 SQ. FT.
 TOTAL GARAGE AREA = 551.6 SQ. FT.



OPTIONAL MAIN FLOOR
 LAUNDRY / MUDROOM



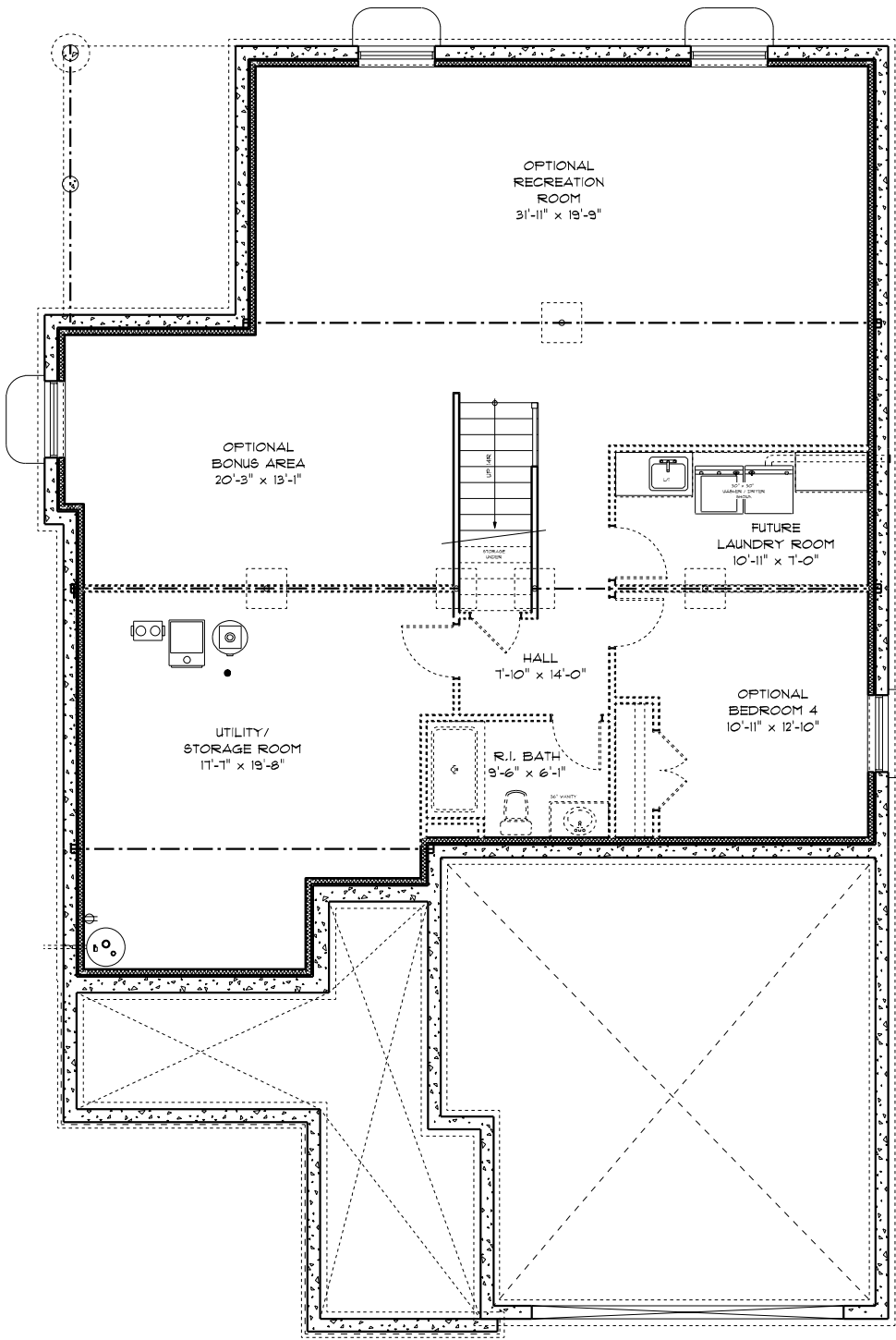
REAR ELEVATION

THE COLONEL

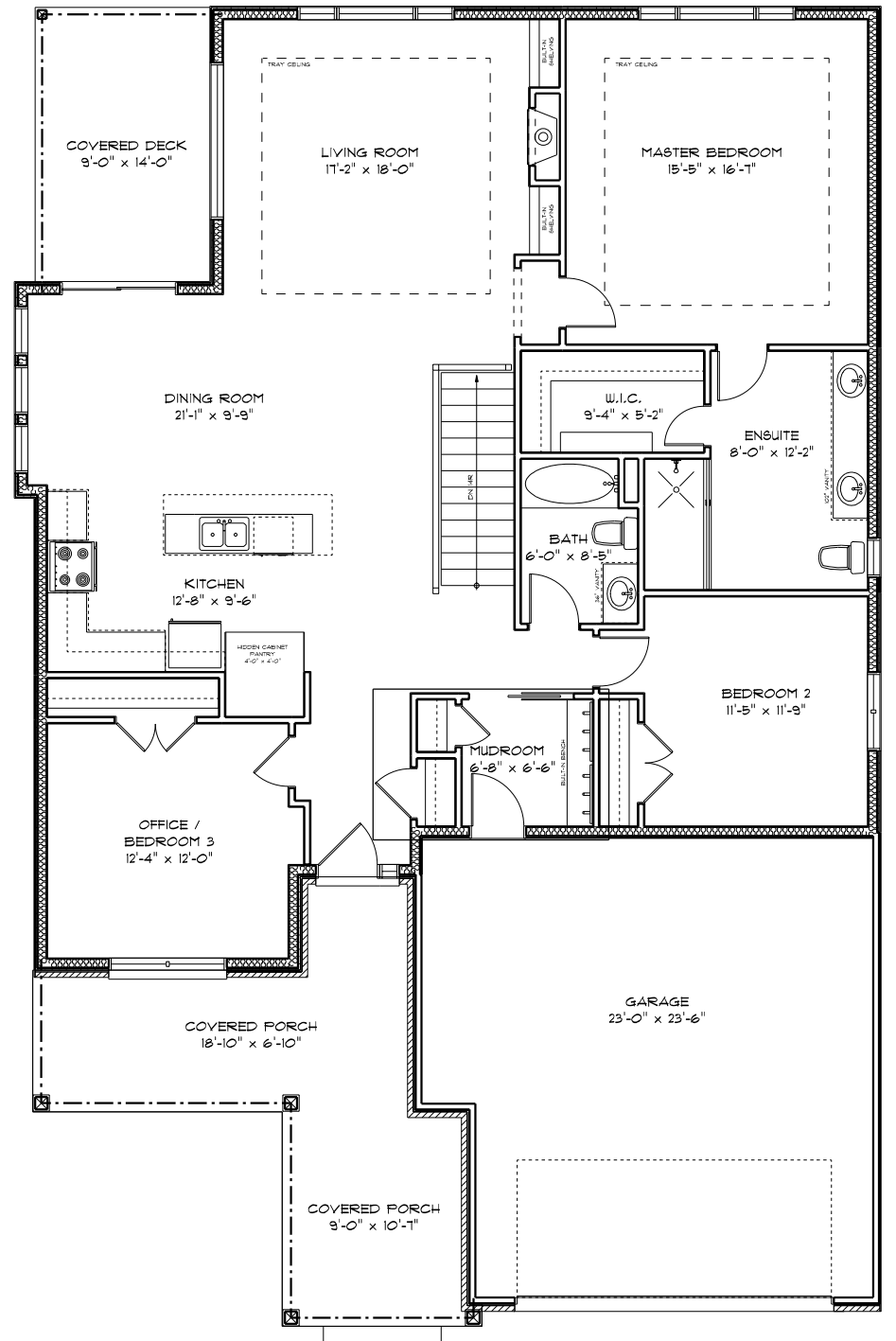
THIS IS A RENDERED DRAWING OF THE BUILDING.
 CONSTRUCTION OF BUILDING MAY NOT BE EXACT.



FRONT ELEVATION

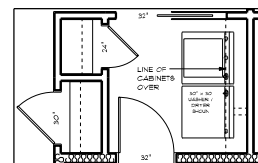


FOUNDATION PLAN

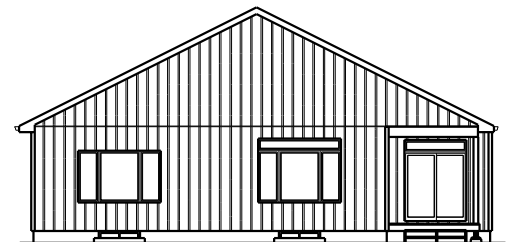


MAIN FLOOR PLAN

TOTAL LIVING AREA = 1,824.5 SQ. FT.
TOTAL GARAGE AREA = 551.6 SQ. FT.



OPTIONAL MAIN FLOOR
LAUNDRY / MUDROOM



REAR ELEVATION

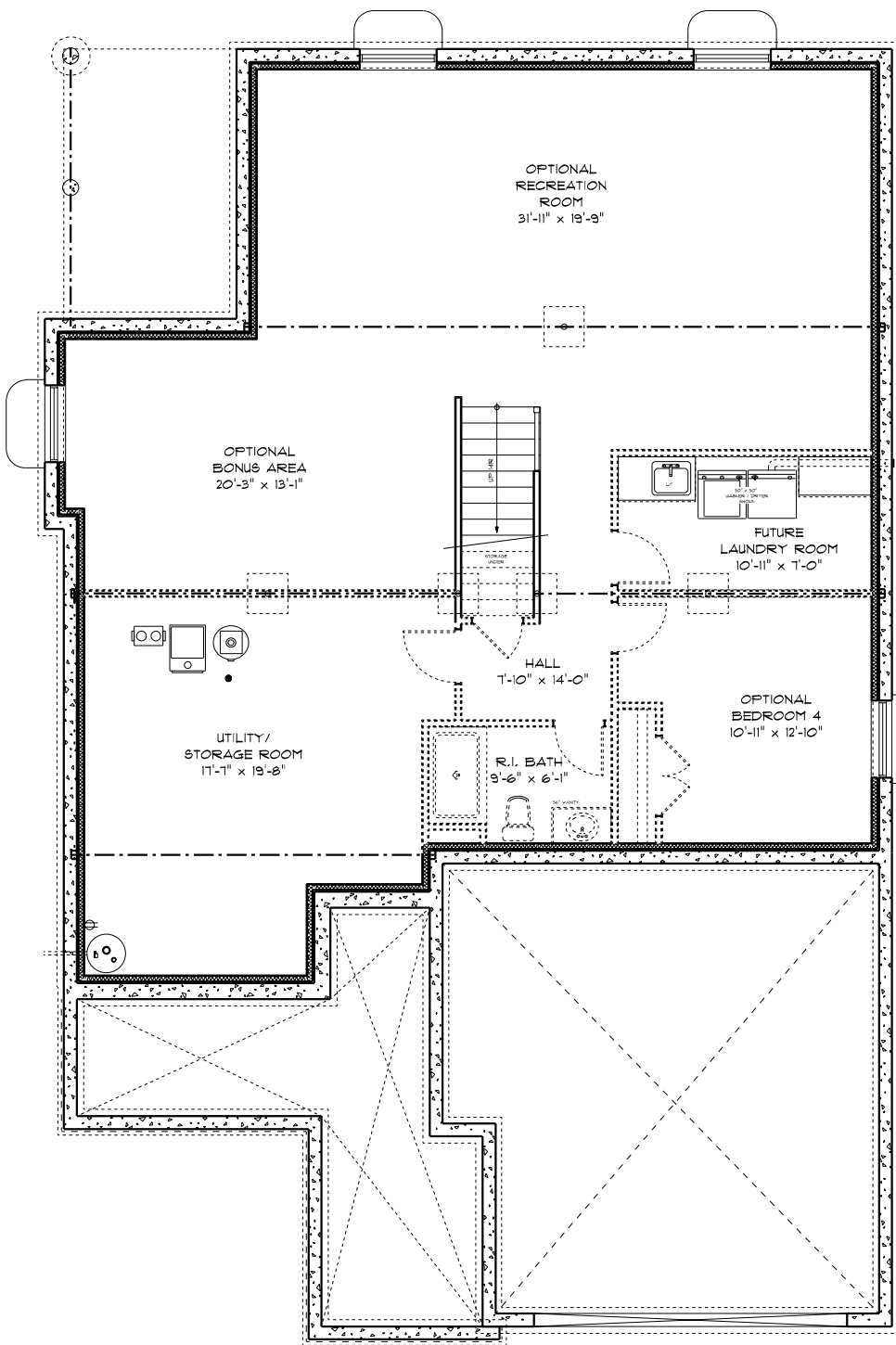
THE COLONEL

ROOF OPTION #2

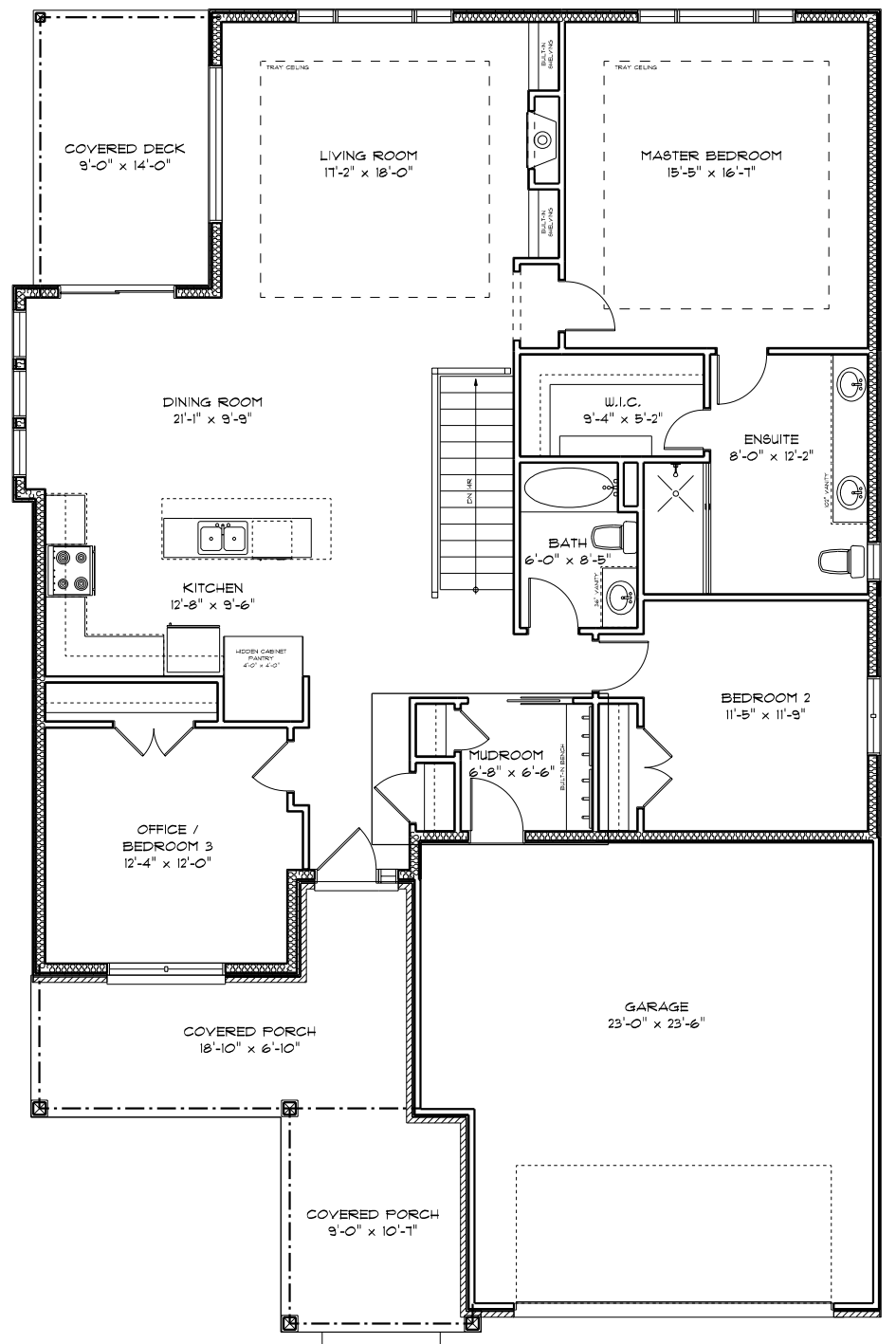
THIS IS A RENDERED DRAWING OF THE BUILDING.
CONSTRUCTION OF BUILDING MAY NOT BE EXACT.



FRONT ELEVATION

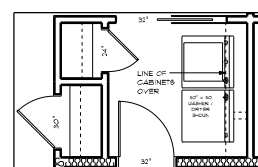


FOUNDATION PLAN

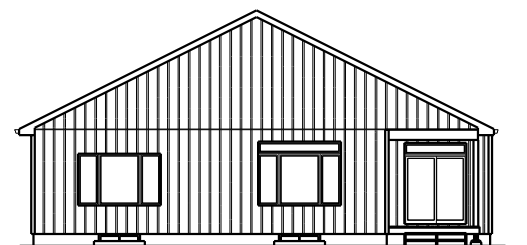


MAIN FLOOR PLAN

TOTAL LIVING AREA = 1,824.5 SQ. FT.
TOTAL GARAGE AREA = 551.6 SQ. FT.



OPTIONAL MAIN FLOOR
LAUNDRY / MUDROOM

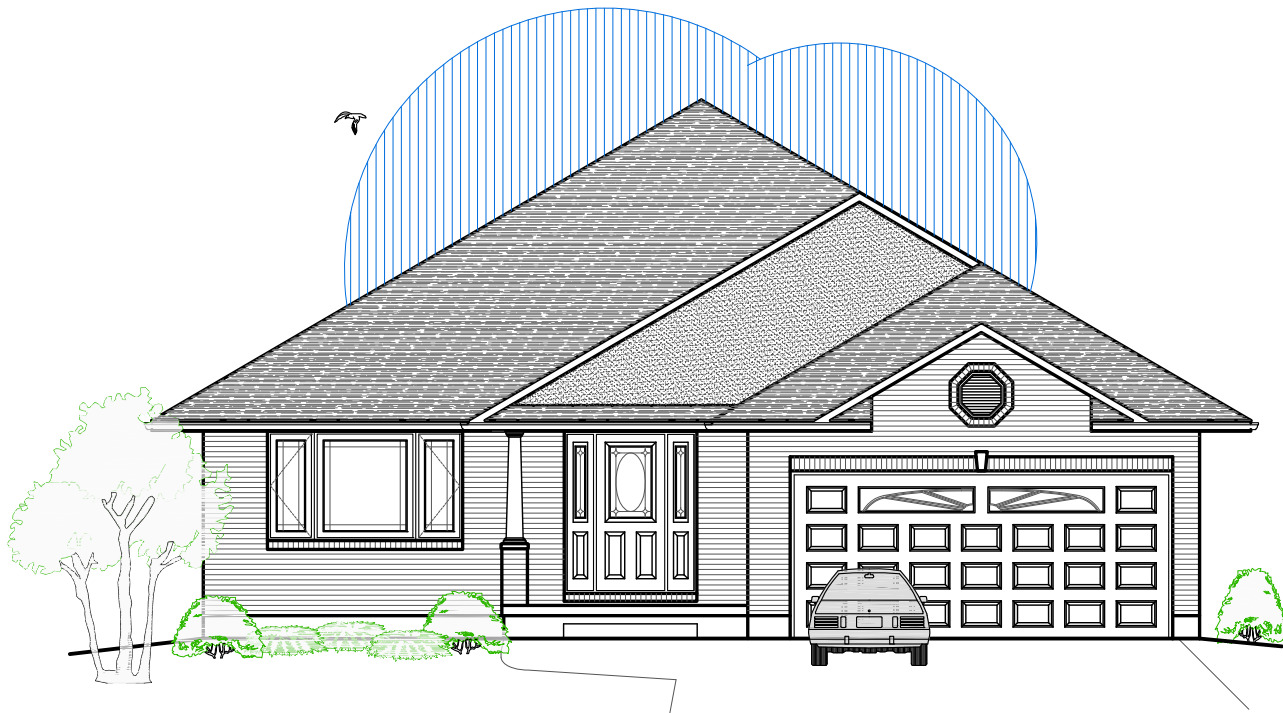


REAR ELEVATION

THE COLONEL

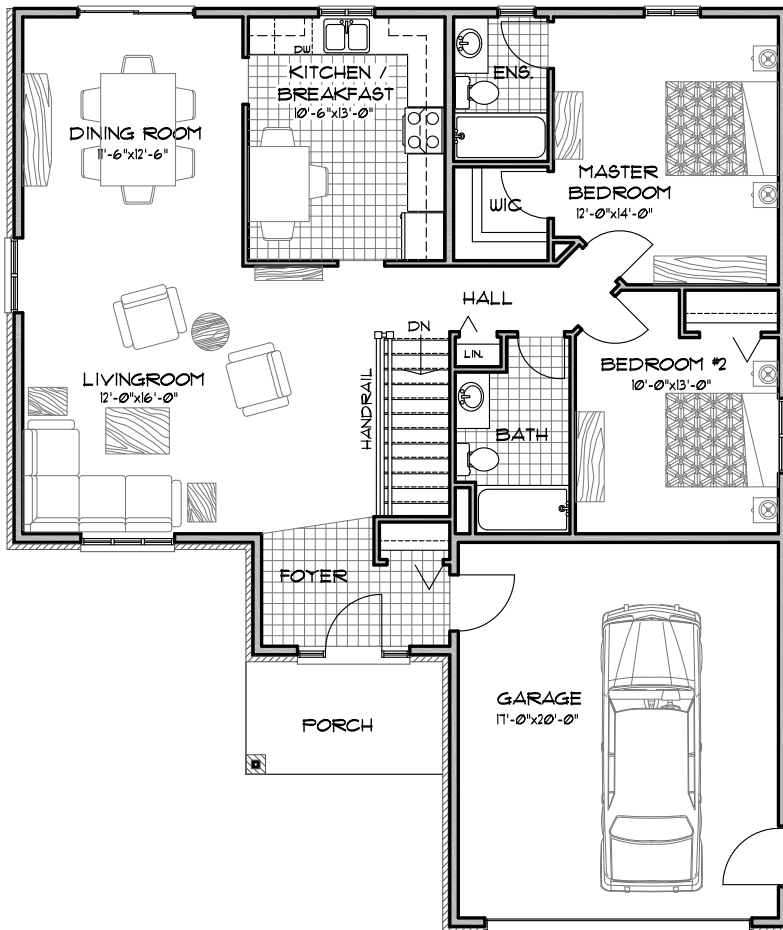
ROOF OPTION #3

THIS IS A RENDERED DRAWING OF THE BUILDING.
CONSTRUCTION OF BUILDING MAY NOT BE EXACT.

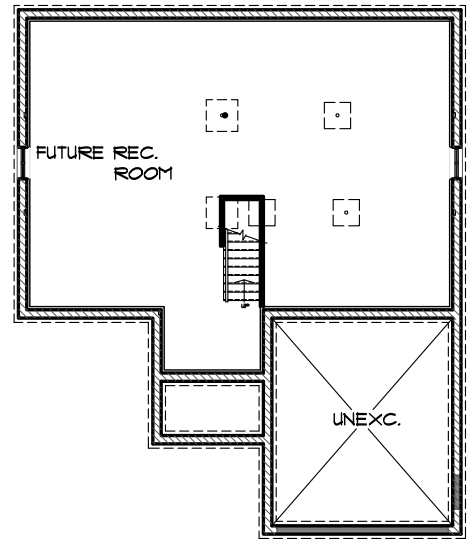


The Connel II

- 1265 sq.ft. -



Ground Floor Plan
41'-6" x 49'-6"



Basement Plan

Featuring

- 2 Bedrooms
- 2 Bathrooms
- Covered Porch

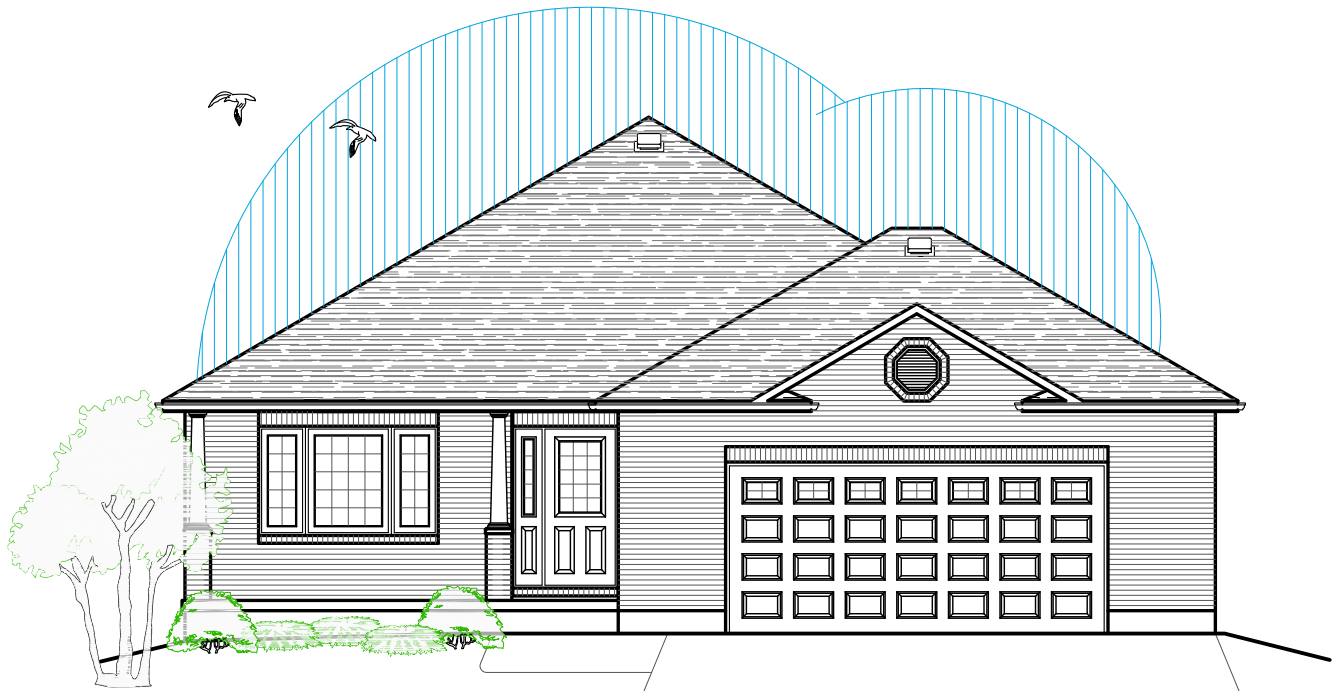
Optional Features Available
Cold Storage
Covered Rear Deck



**DIAMOND
HOMES**
BY DAVIS

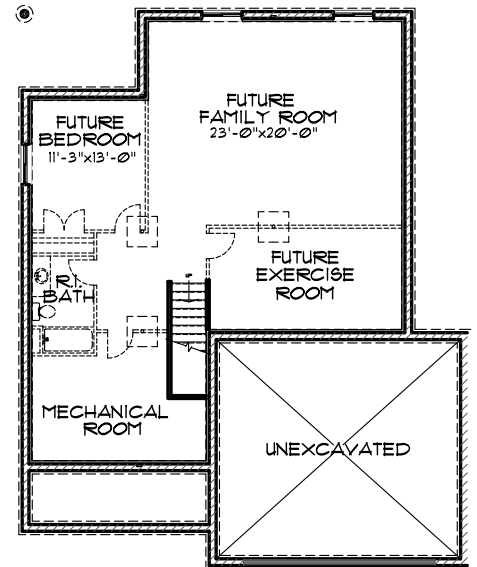
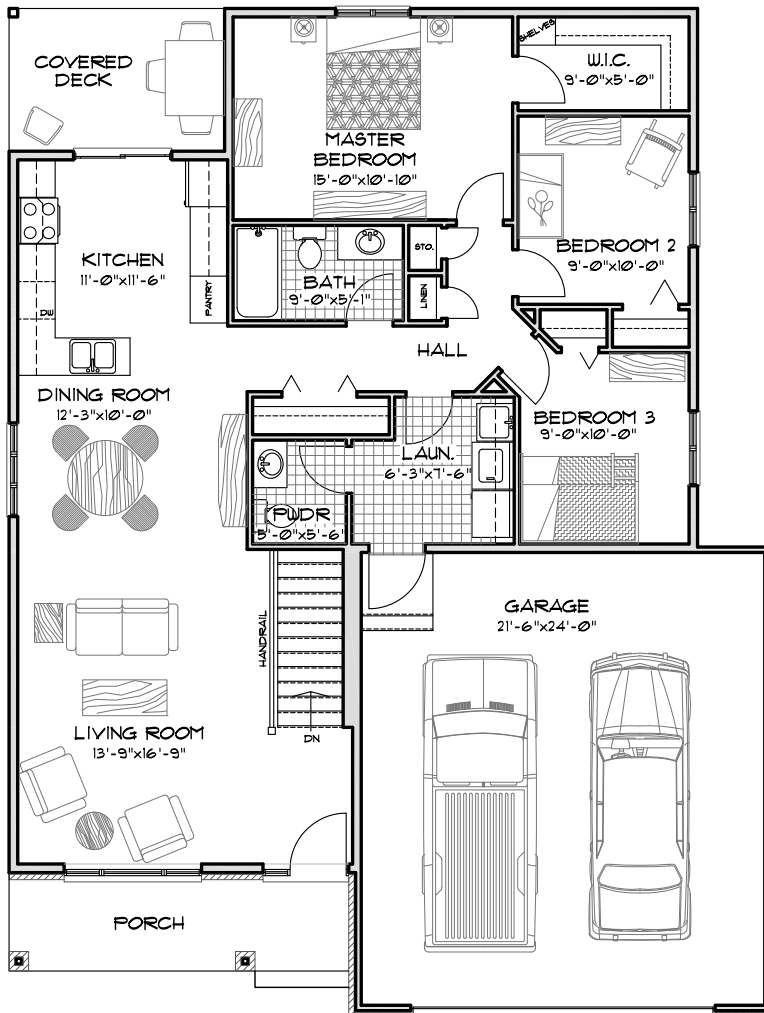
1458 Fish & Game Club Rd.
Frankford, ON K0K 2C0
Tel: (613) 398-0170 Fax: (613) 398-3297
davis.john@sympatico.ca

Plans by:
Designs Plus
613-961-9256
Sue Sampson
CONCEPTUAL PLANS ONLY, S.O.C.



The Dundee

- 1310 sq.ft. -



Basement Plan

Featuring

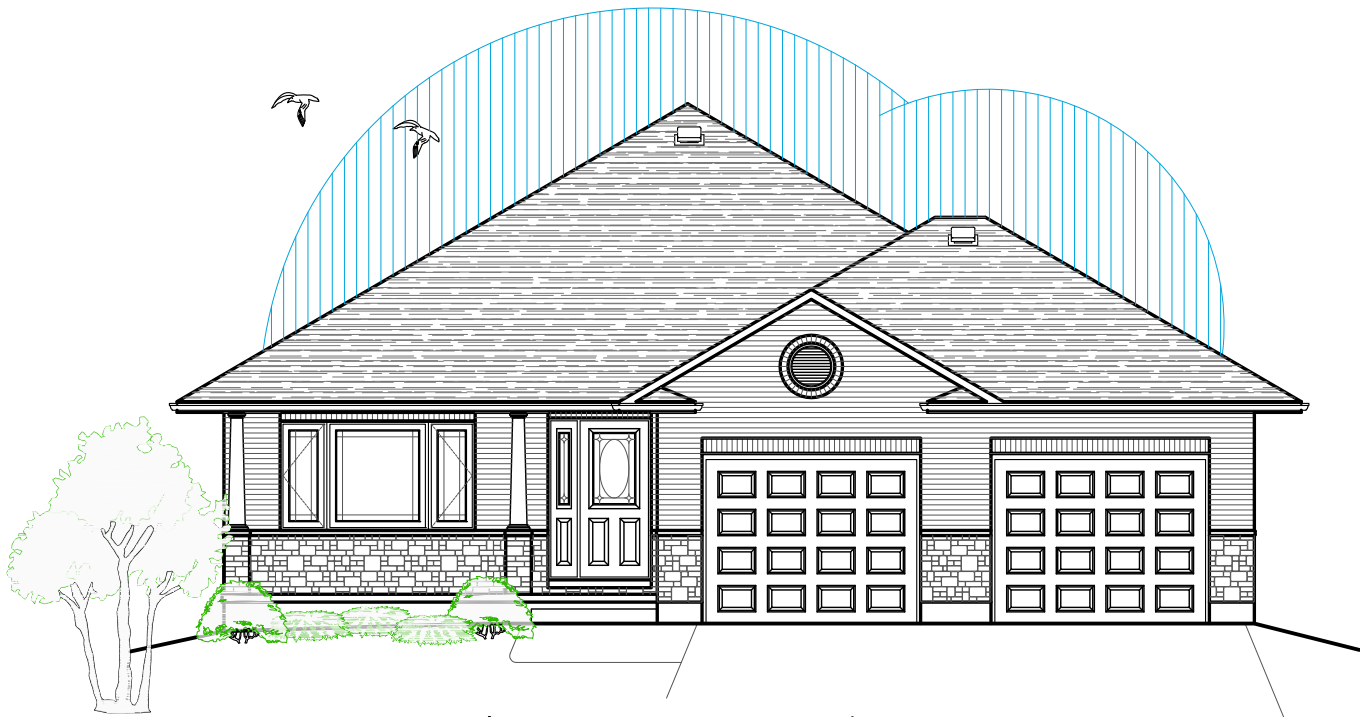
- 3 Bedrooms
- 1½ Bathrooms
- Main Floor Laundry
- Covered Porch
- Oversize Double Garage
- Optional Features Available
- Cold Storage
- Covered Rear Deck



Plans by:
Designs Plus
 613-961-9256
 Sue Sampson
 CONCEPTUAL PLANS ONLY, S.O.B.

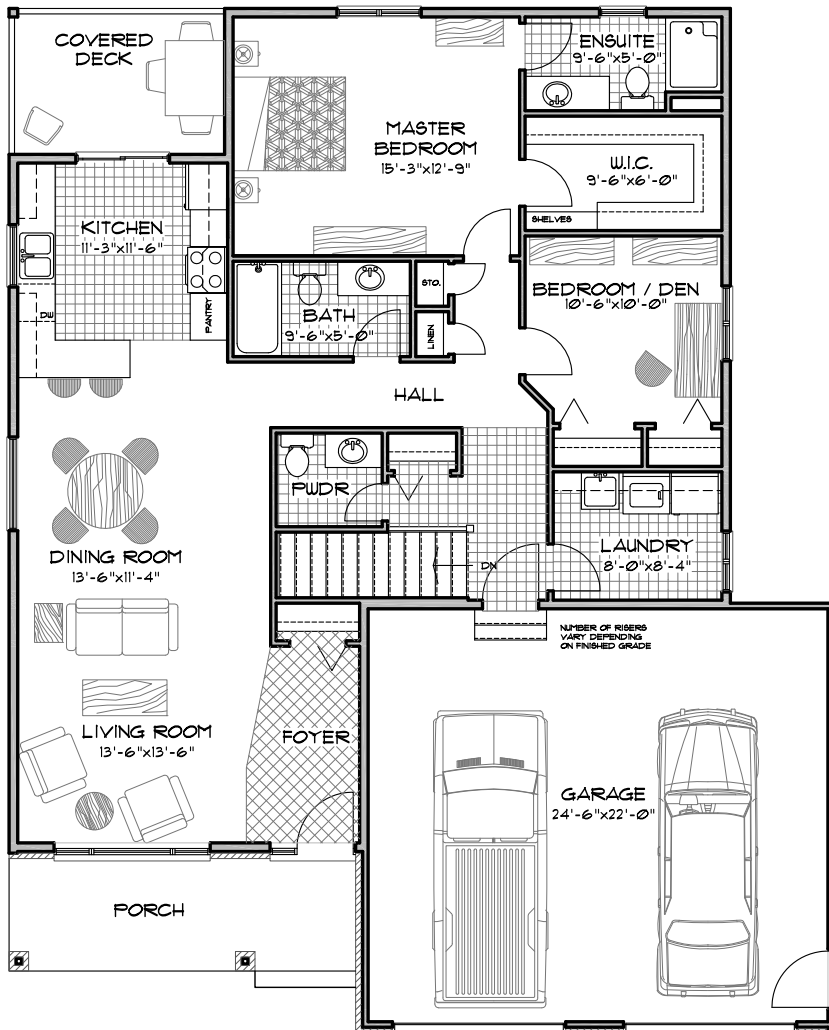
Ground Floor Plan
 41'-0" x 54'-3"

1458 Fish & Game Club Rd.
 Frankford, ON K0K 2C0
 Tel: (613) 398-0170 Fax: (613) 398-3297
 davis.john@sympatico.ca

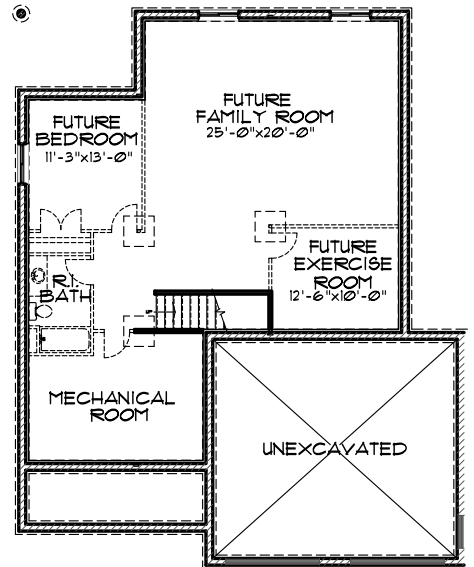


The Dundee II

- 1400 sq.ft. -



Ground Floor Plan
44'-0" x 54'-9"



Basement Plan

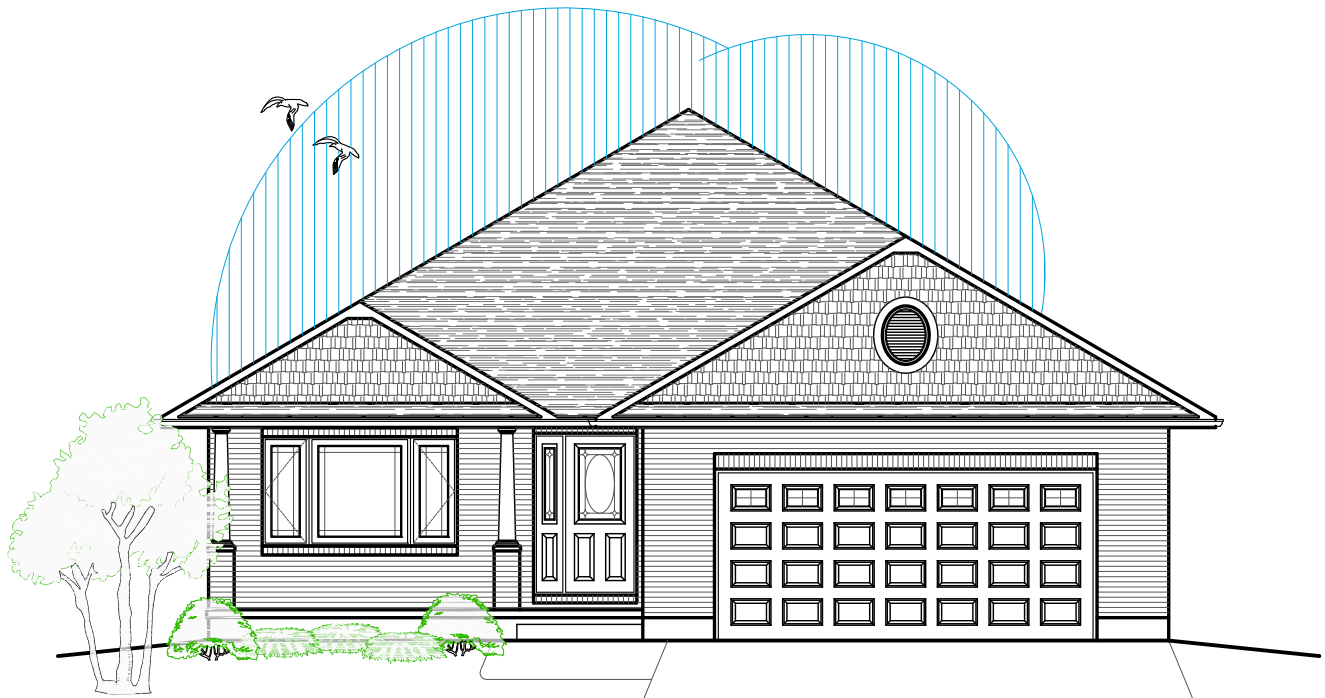
Featuring

- 2 Bedrooms
- 2½ Bathrooms
- Main Floor Laundry
- Covered Porch
- Oversize Double Garage
- Optional Features Available
- Cold Storage
- Covered Rear Deck



1458 Fish & Game Club Rd.
Frankford, ON K0K 2C0
Tel: (613) 398-0170 Fax: (613) 398-3297
davis.john@sympatico.ca

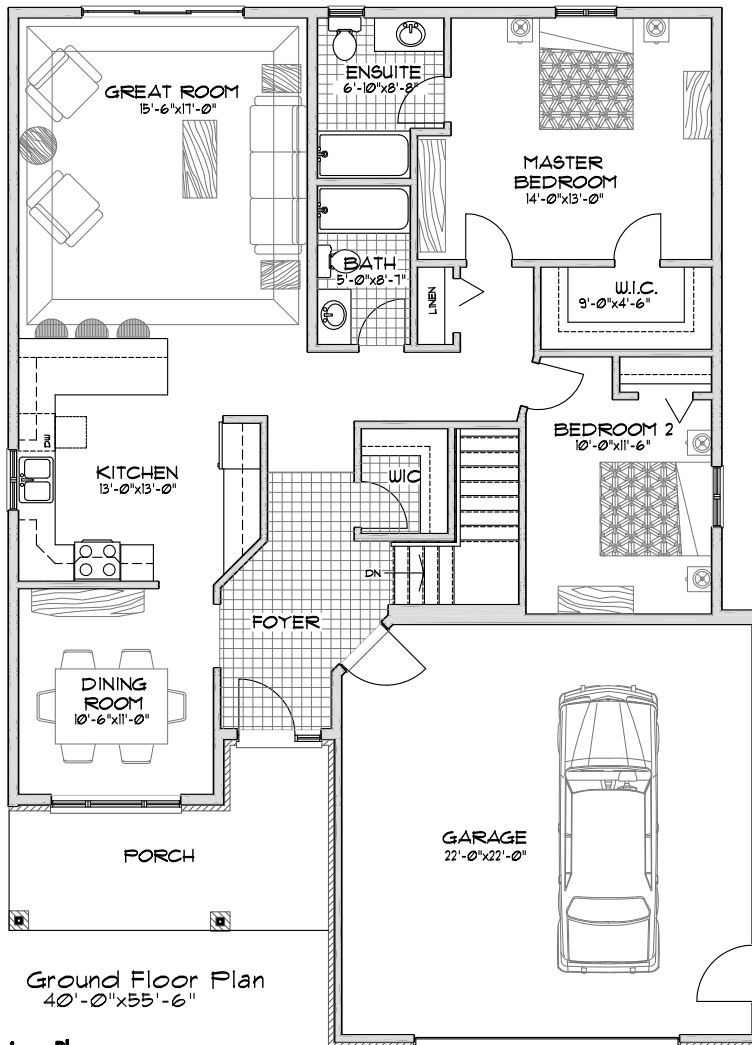
Plans by:
Designs Plus
613-961-9256
Sue Sampson
CONCEPTUAL PLANS ONLY, S.O.B.



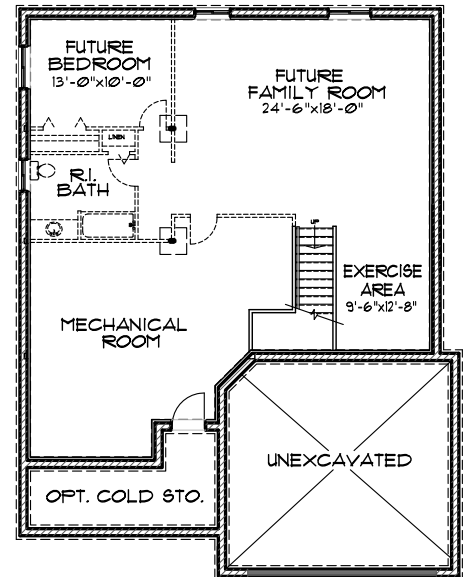
The Glasgow II

Option A

- 1410 sq.ft. -



Ground Floor Plan
40'-0" x 55'-6"



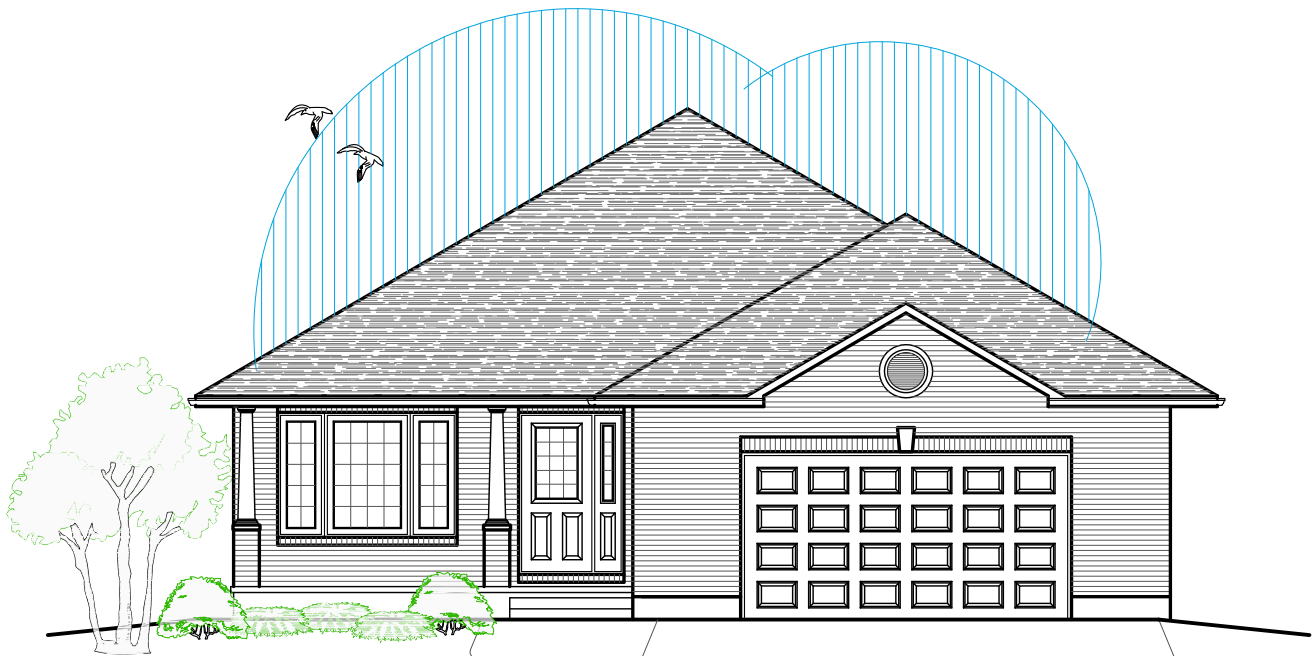
Basement Plan

Featuring

- 2 Bedrooms
- 2 Bathrooms
- Foyer Walk-in Closet
- Covered Porch
- Oversize Double Garage
- Optional Features Available
- Cold Storage
- Covered Rear Deck



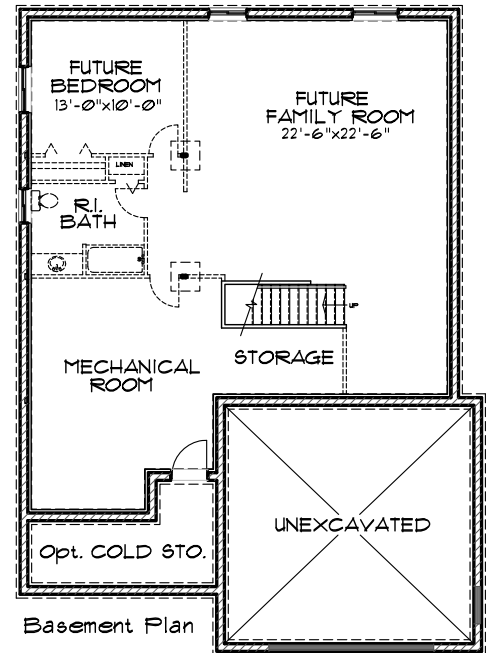
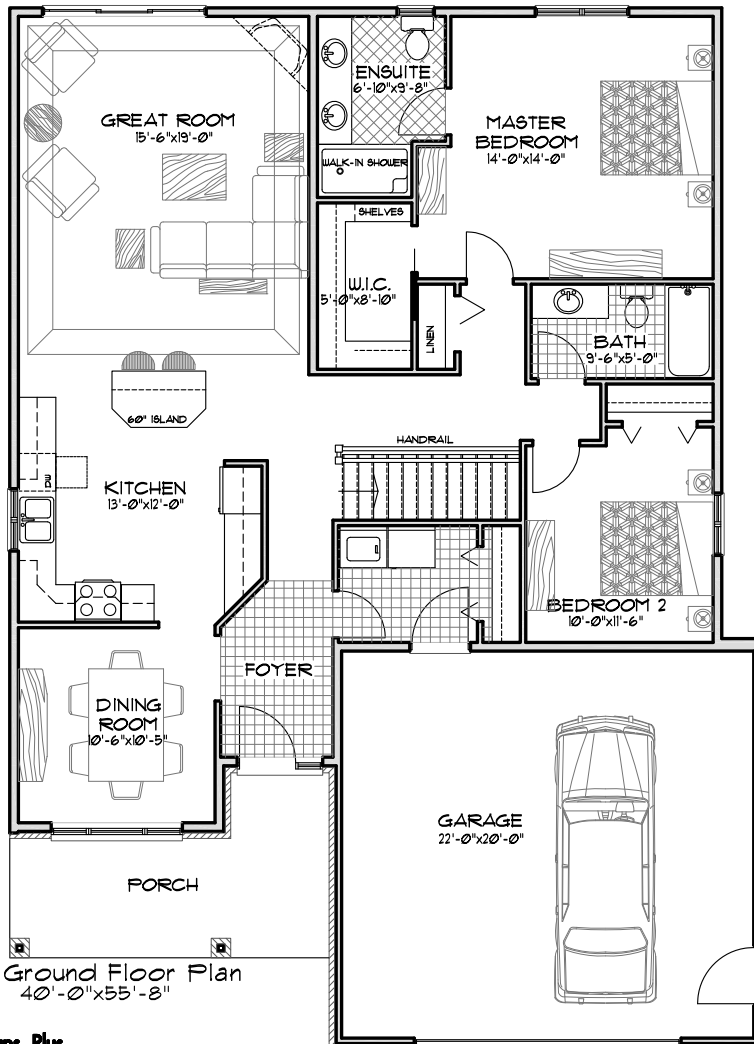
1458 Fish & Game Club Rd.
Frankford, ON K0K 2C0
Tel: (613) 398-0170 Fax: (613) 398-3297
davis.john@sympatico.ca



The Glasgow II

Option B

- 1465 sq.ft. -

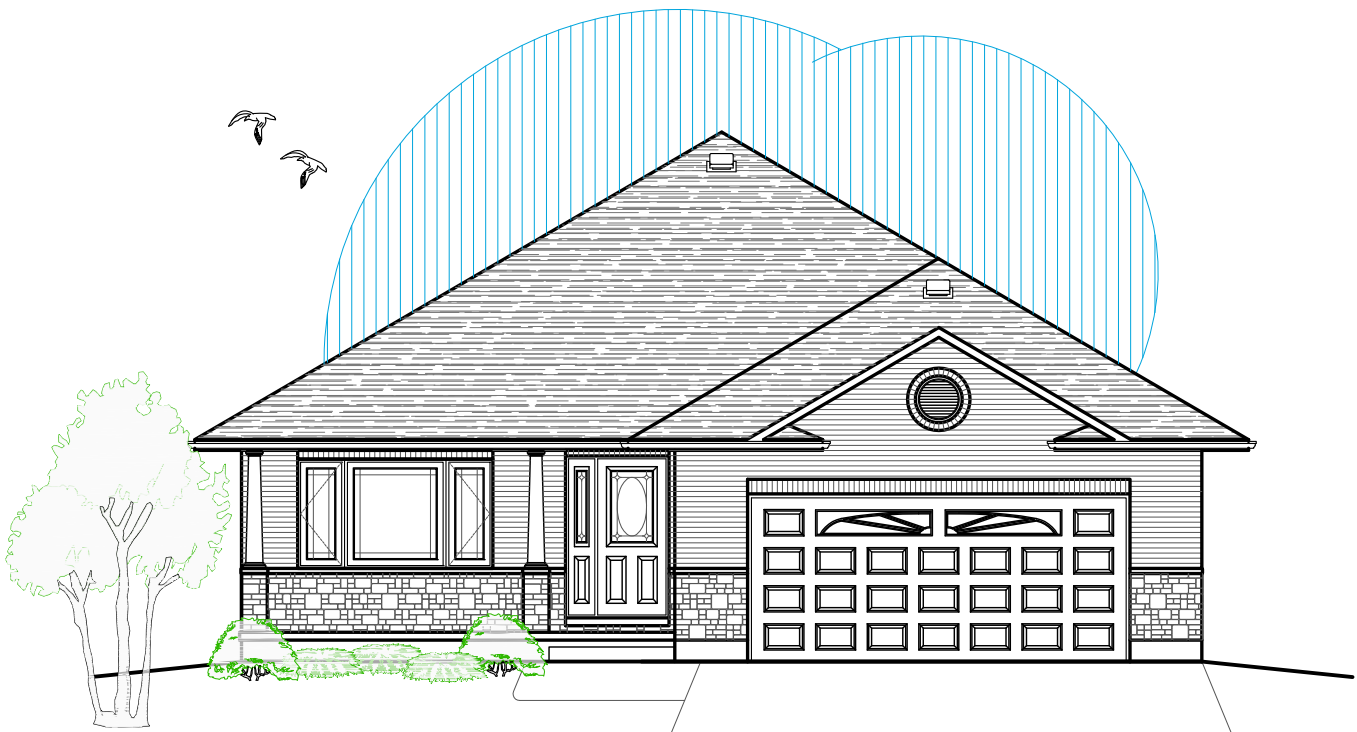


Featuring

- 2 Bedrooms
- 2 Bathrooms
- Main Floor Laundry
- Covered Porch
- Oversize Double Garage
- Optional Features Available
- Cold Storage
- Covered Rear Deck



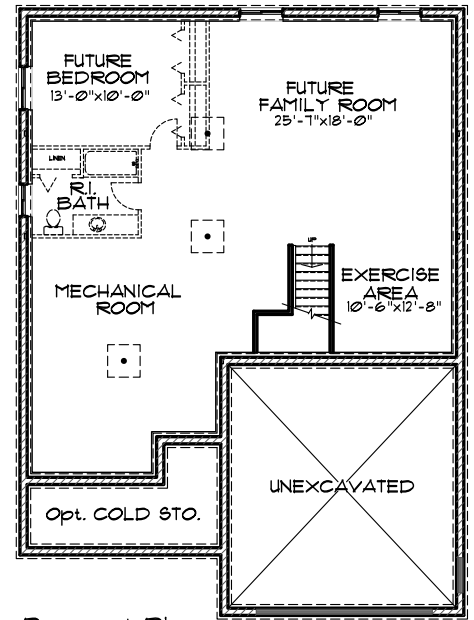
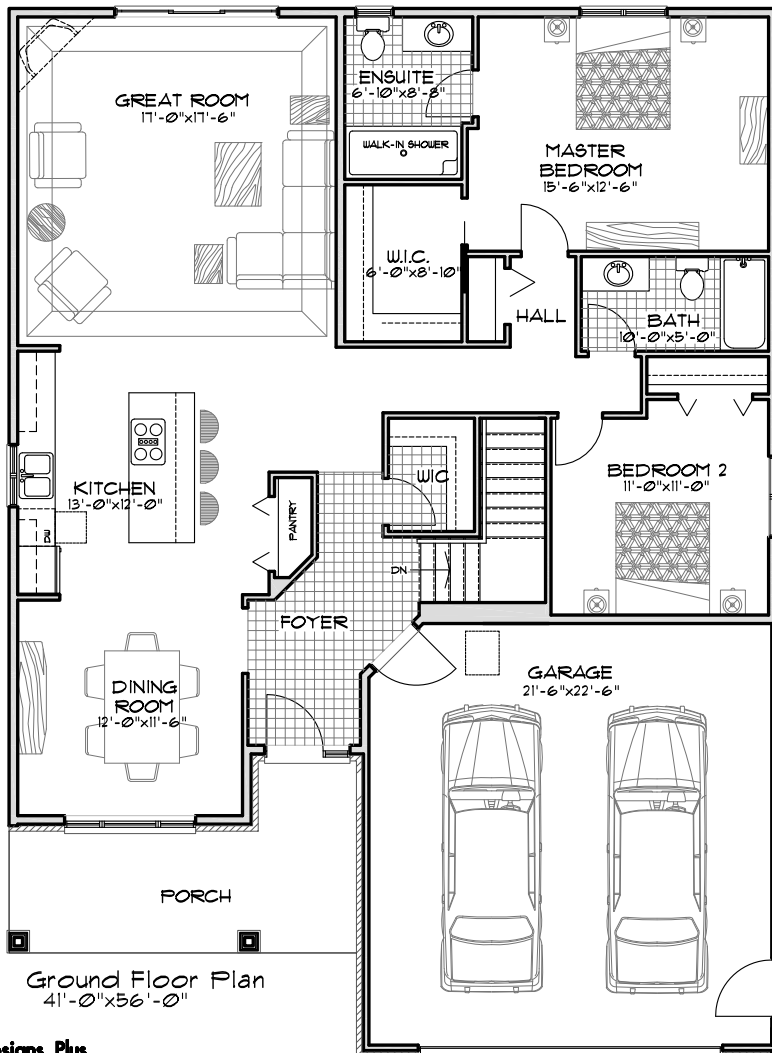
1458 Fish & Game Club Rd.
Frankford, ON K0K 2C0
Tel: (613) 398-0170 Fax: (613) 398-3297
davis.john@sympatico.ca



The Glasgow II

Option C

- 1540 sq.ft. -

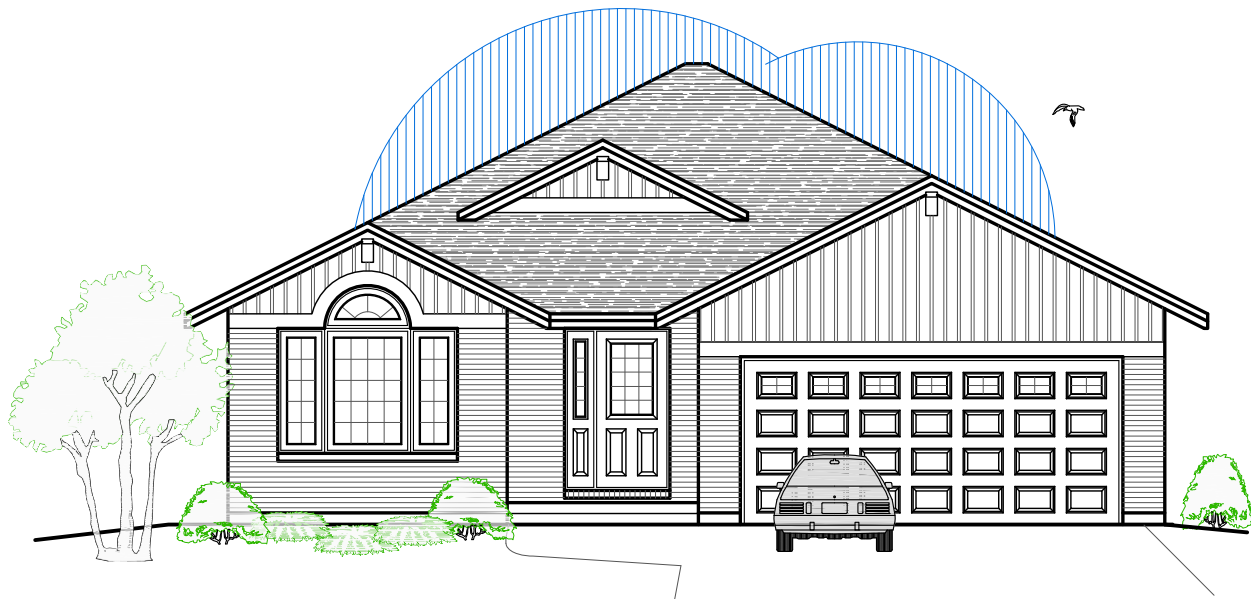


Featuring

- 2 Bedrooms
- 2 Bathrooms
- Foyer Walk-In Closet
- Covered Porch
- Oversize Double Garage
- Optional Features Available
- Cold Storage
- Covered Rear Deck

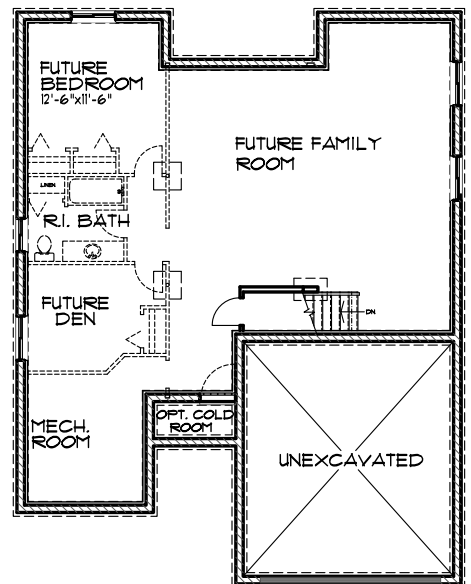
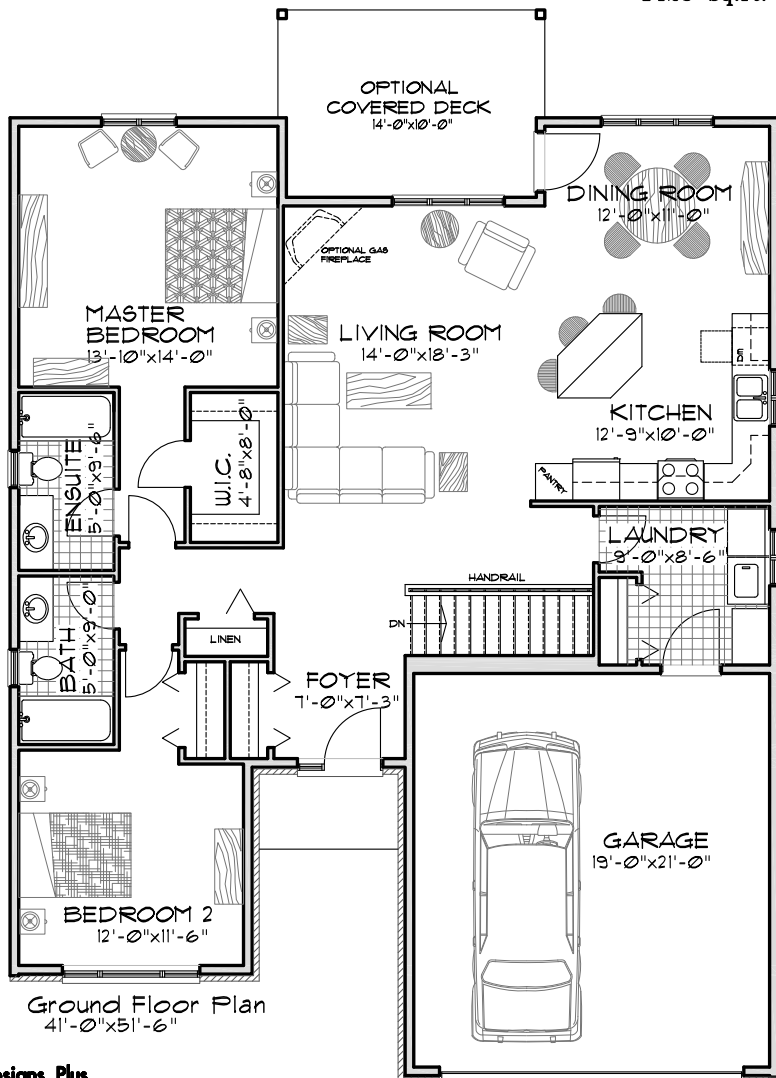


1458 Fish & Game Club Rd.
Frankford, ON K0K 2C0
Tel: (613) 398-0170 Fax: (613) 398-3297
davis.john@sympatico.ca



The Huntley II

- 1425 sq.ft. -



Basement Plan

Featuring

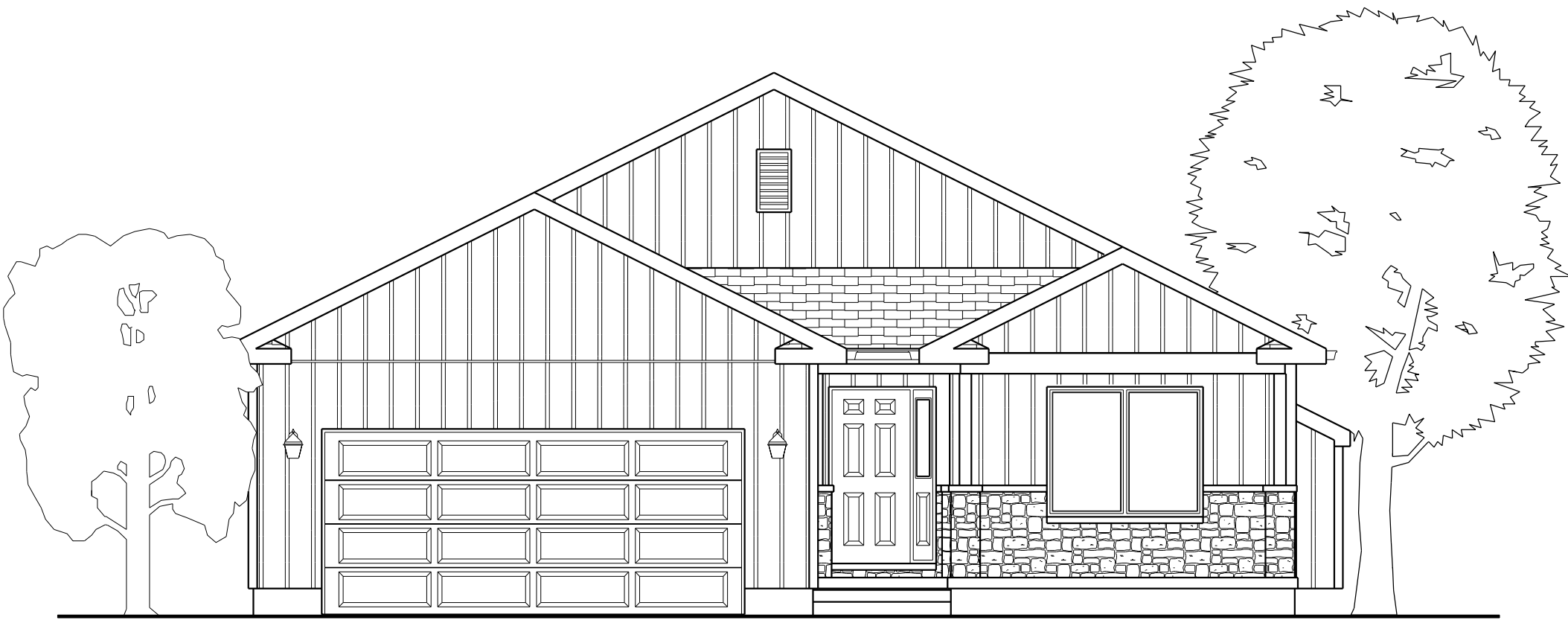
- 2 Bedrooms
- 2 Bathrooms
- Main Floor Laundry

Optional Features Available
Cold Storage
Covered Rear Deck

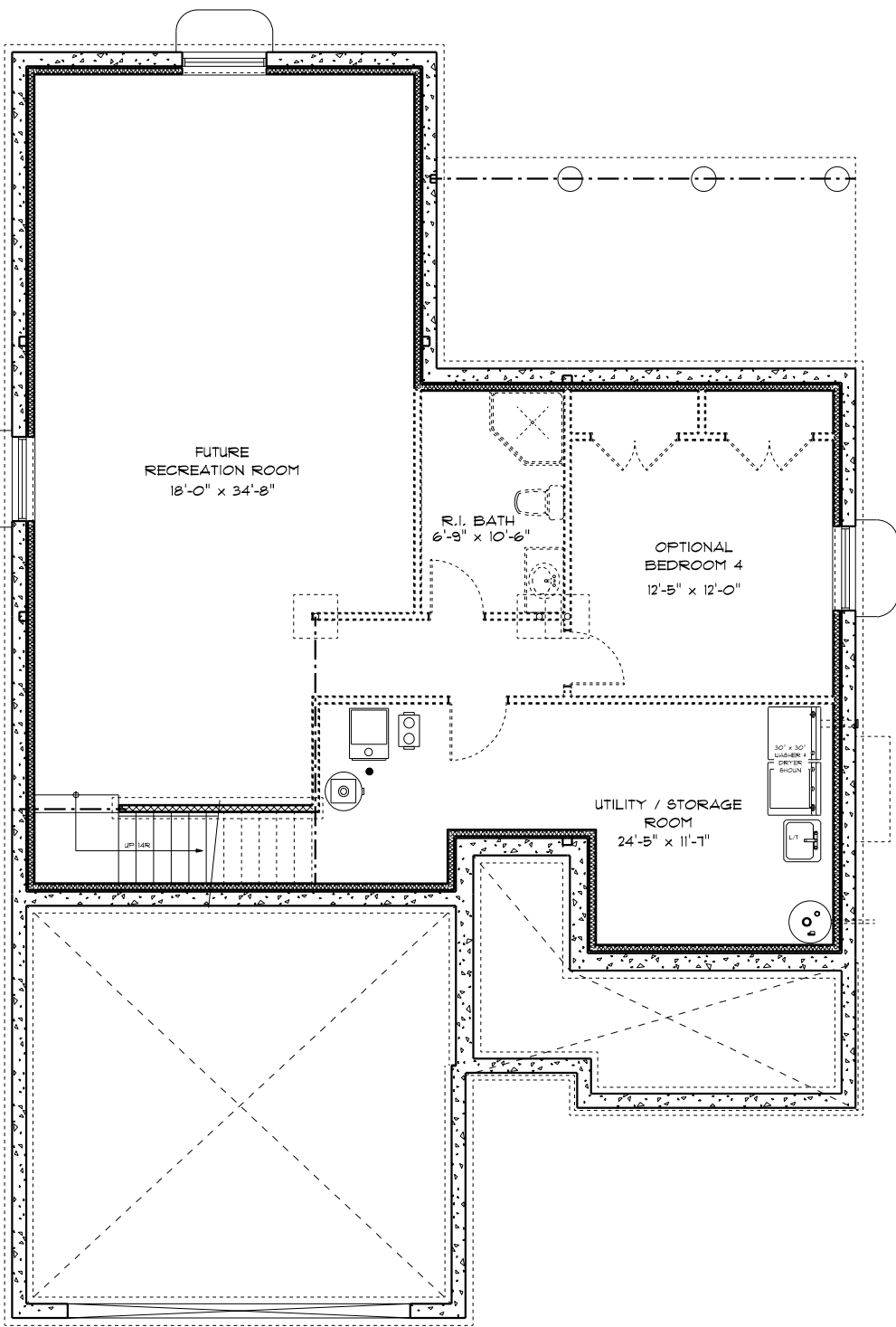


**DIAMOND
HOMES
BY DAVIS**

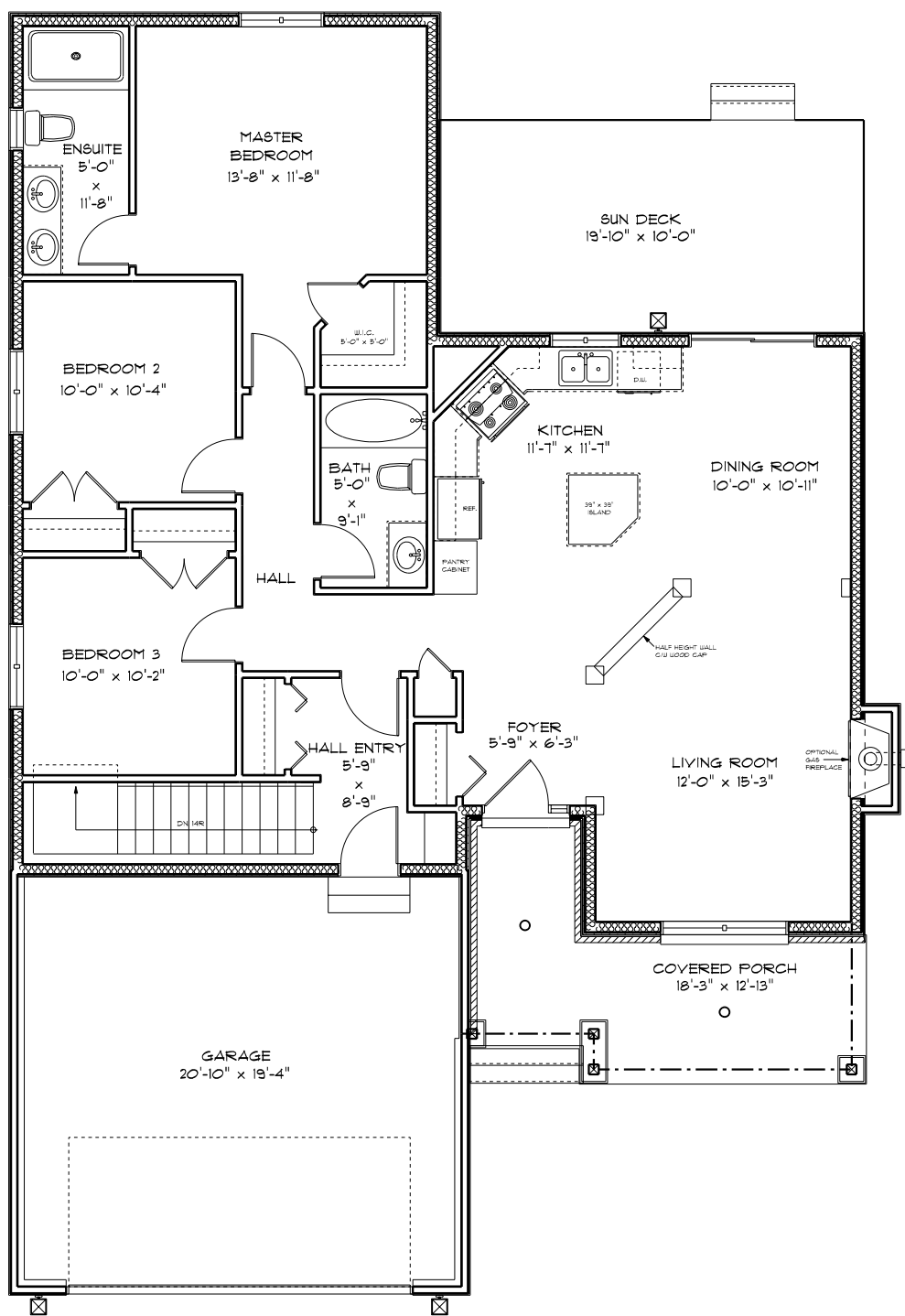
1458 Fish & Game Club Rd.
Frankford, ON K0K 2C0
Tel: (613) 398-0170 Fax: (613) 398-3297
davis.john@sympatico.ca



FRONT ELEVATION



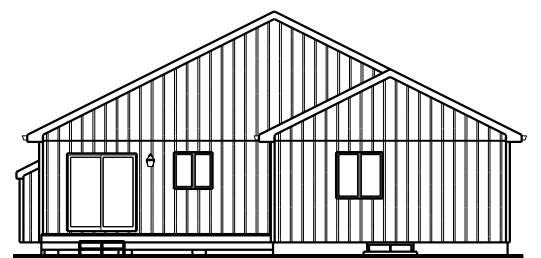
FOUNDATION



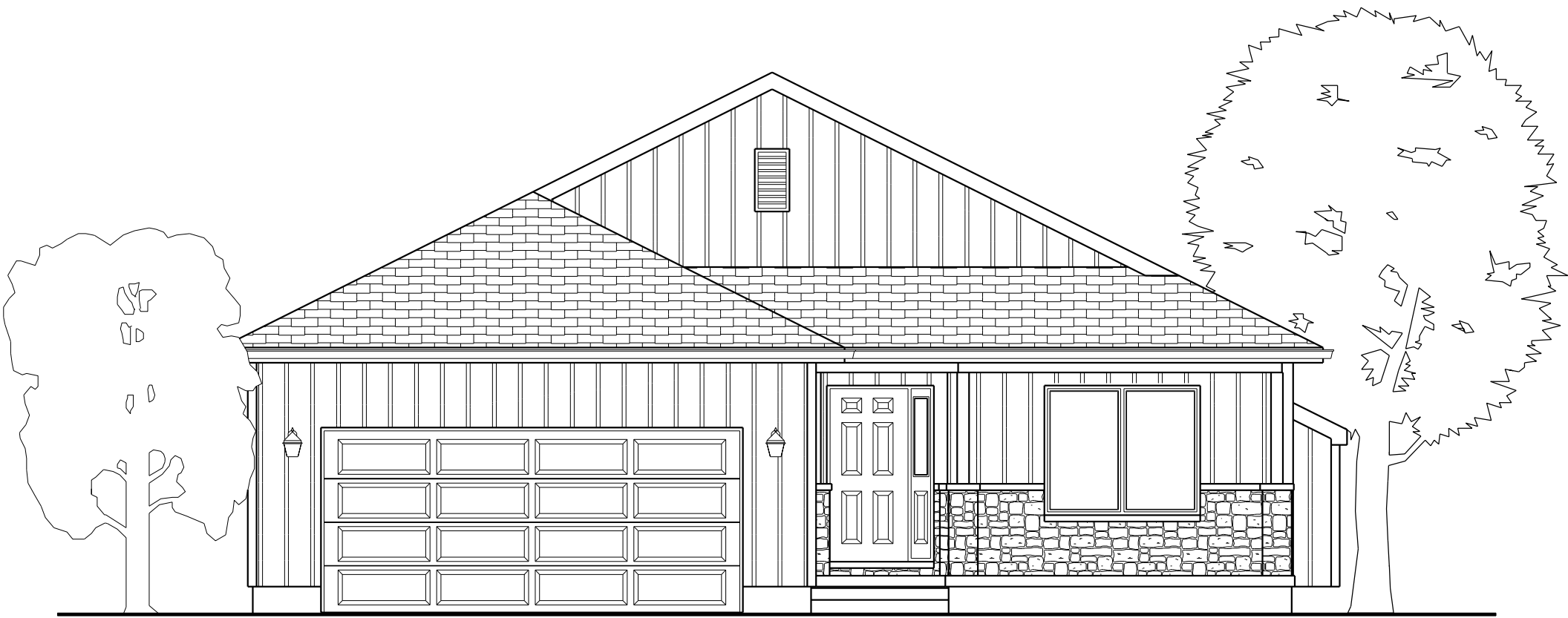
MAIN FLOOR PLAN
 TOTAL LIVING AREA = 1,367.5 SQ. FT.
 TOTAL GARAGE AREA = 426.3 SQ. FT.

THE SERGEANT

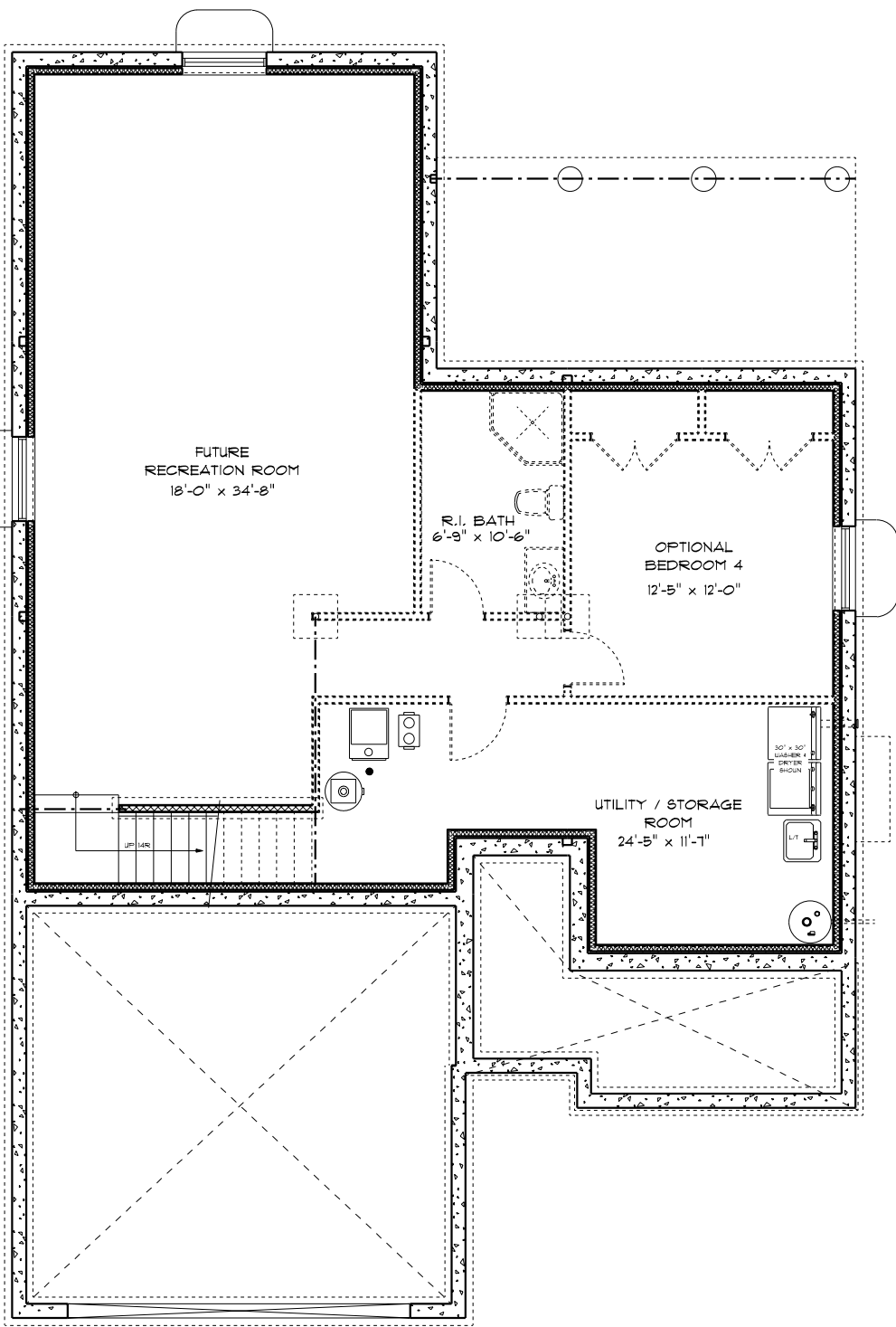
THIS IS A RENDERED DRAWING OF THE BUILDING.
 CONSTRUCTION OF BUILDING MAY NOT BE EXACT.



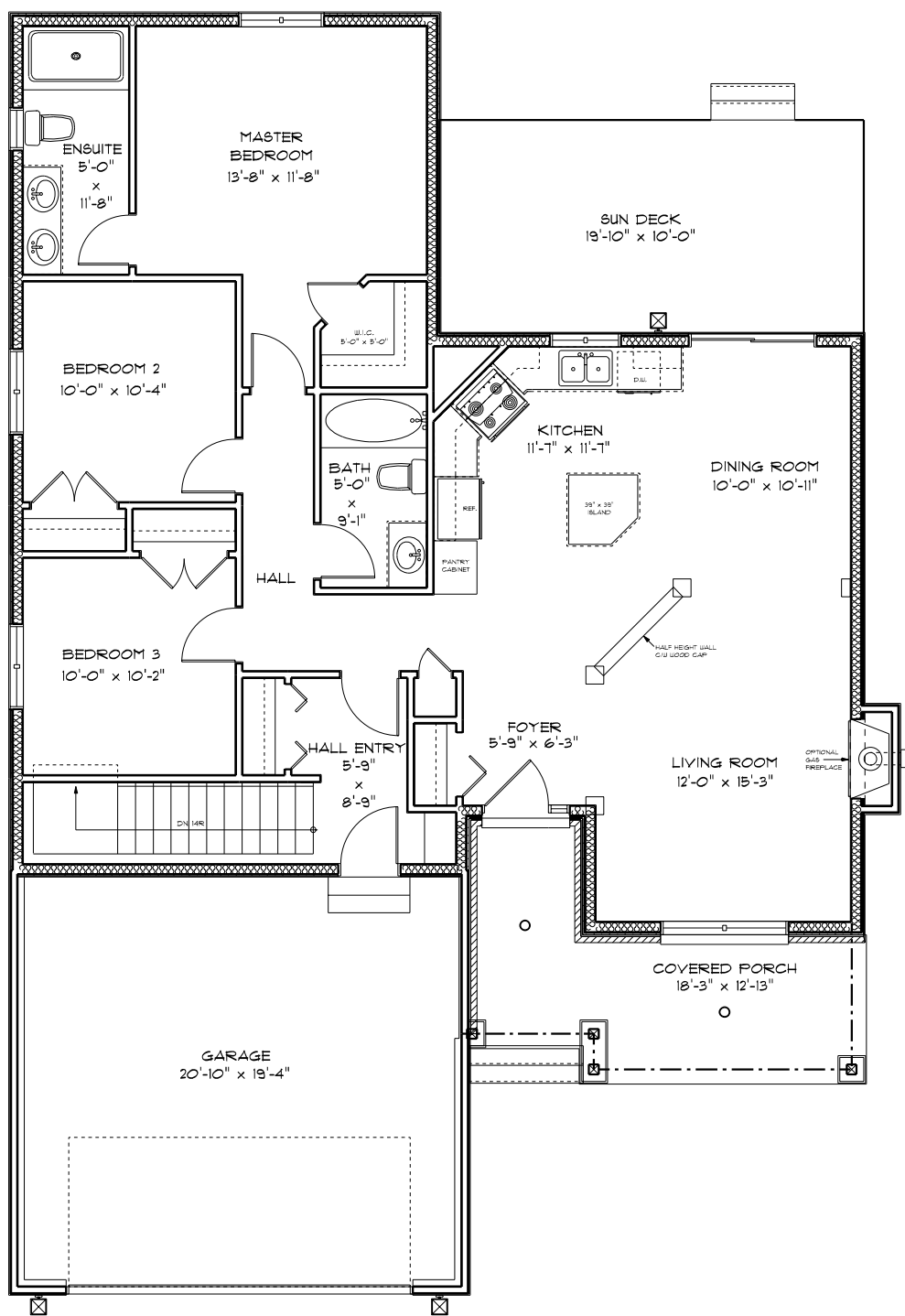
REAR ELEVATION



FRONT ELEVATION



FOUNDATION

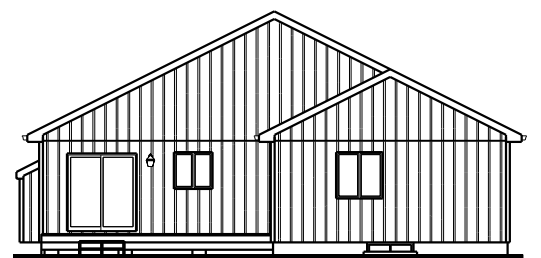


MAIN FLOOR PLAN
 TOTAL LIVING AREA = 1,361.5 SQ. FT.
 TOTAL GARAGE AREA = 426.3 SQ. FT.

THE SERGEANT

ROOF OPTION #2

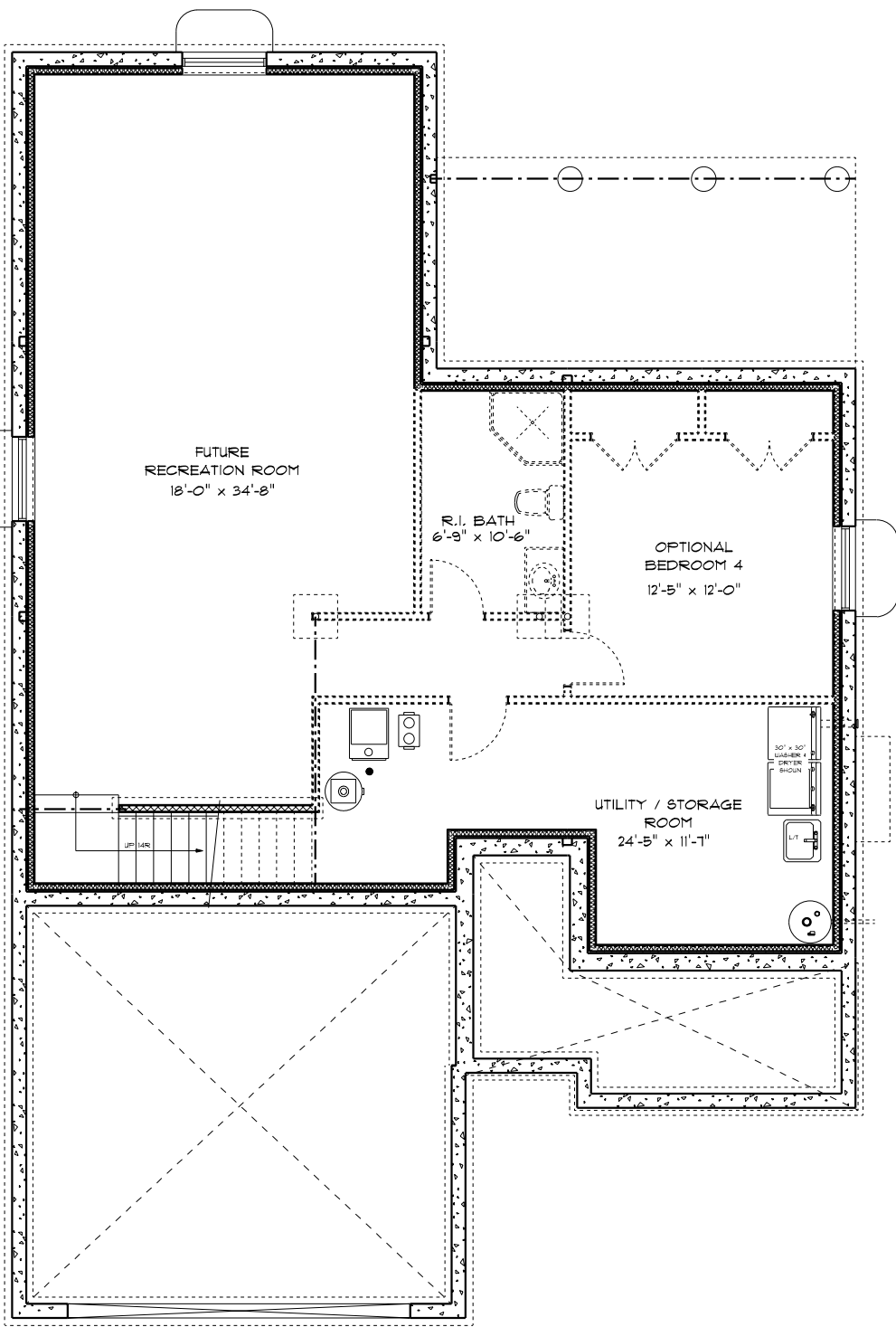
THIS IS A RENDERED DRAWING OF THE BUILDING.
 CONSTRUCTION OF BUILDING MAY NOT BE EXACT.



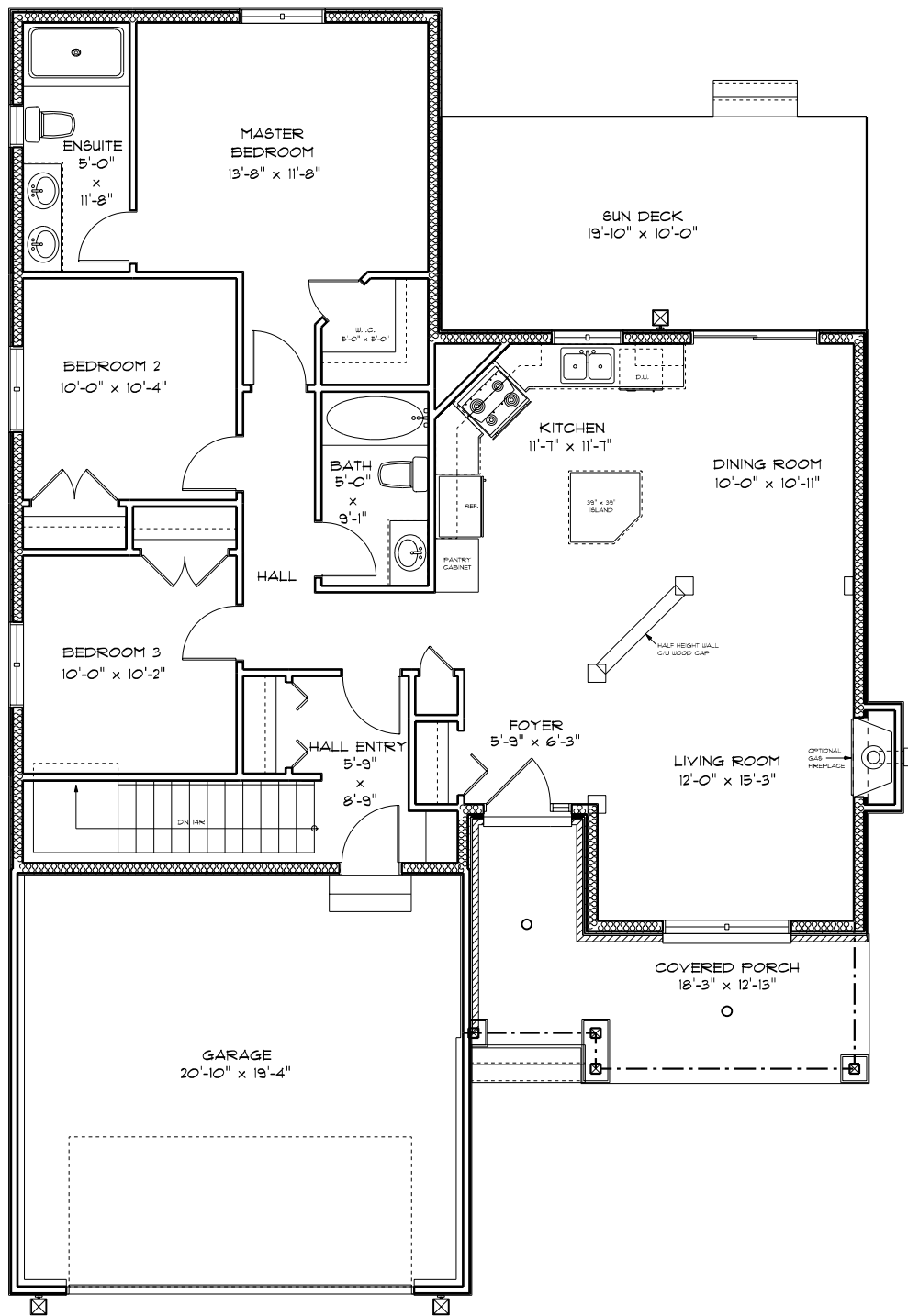
REAR ELEVATION



FRONT ELEVATION



FOUNDATION



MAIN FLOOR PLAN
 TOTAL LIVING AREA = 1,367.5 SQ. FT.
 TOTAL GARAGE AREA = 426.3 SQ. FT.

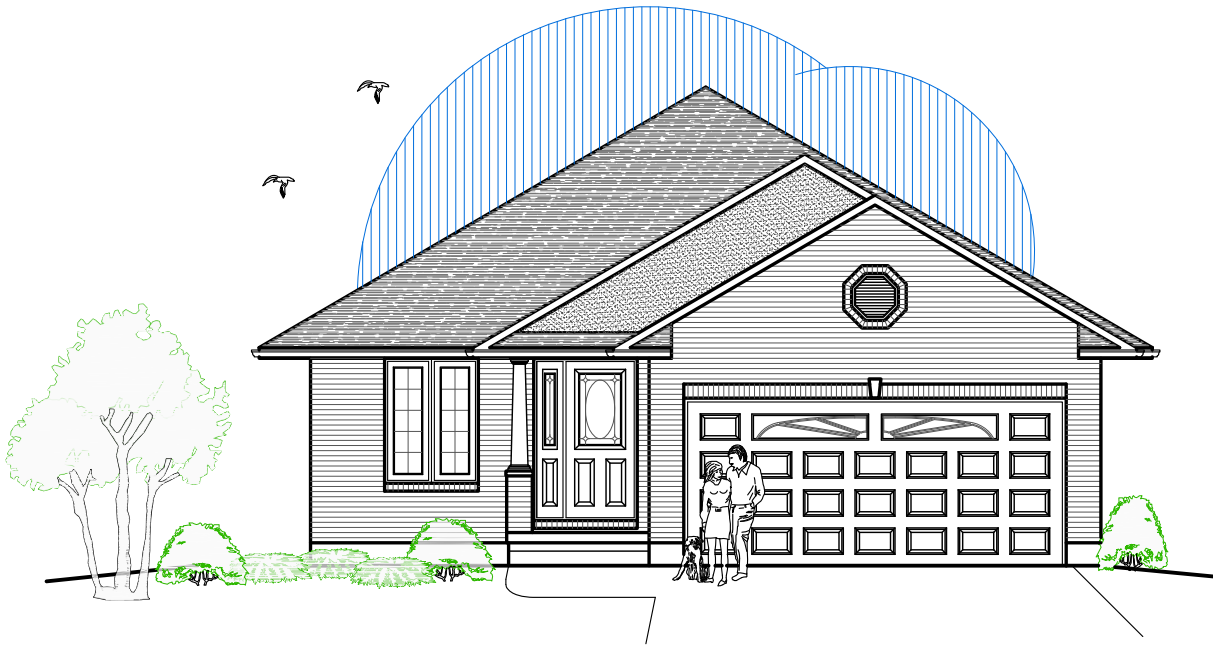
THE SERGEANT

ROOF OPTION #3

THIS IS A RENDERED DRAWING OF THE BUILDING.
 CONSTRUCTION OF BUILDING MAY NOT BE EXACT.



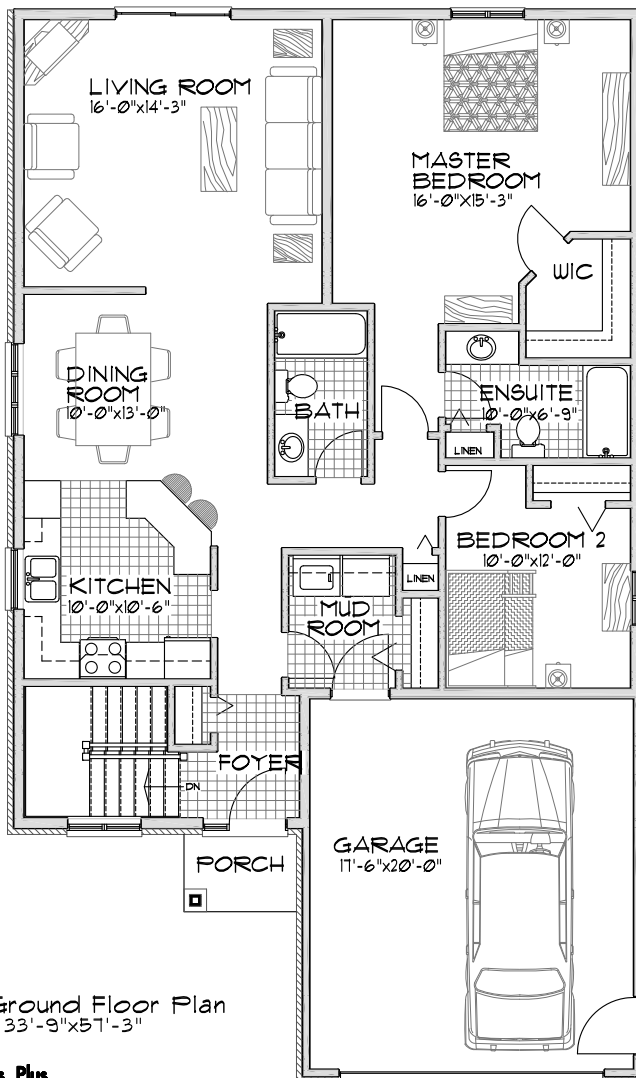
REAR ELEVATION



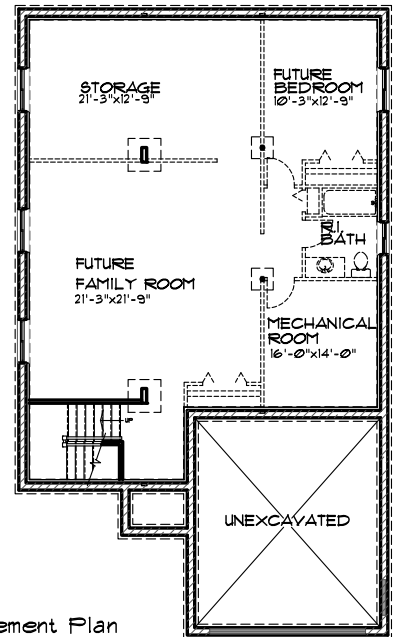
The Stonehaven II

Option A

- 1355 sq.ft. -



Ground Floor Plan
33'-9" x 51'-3"



Basement Plan

Featuring

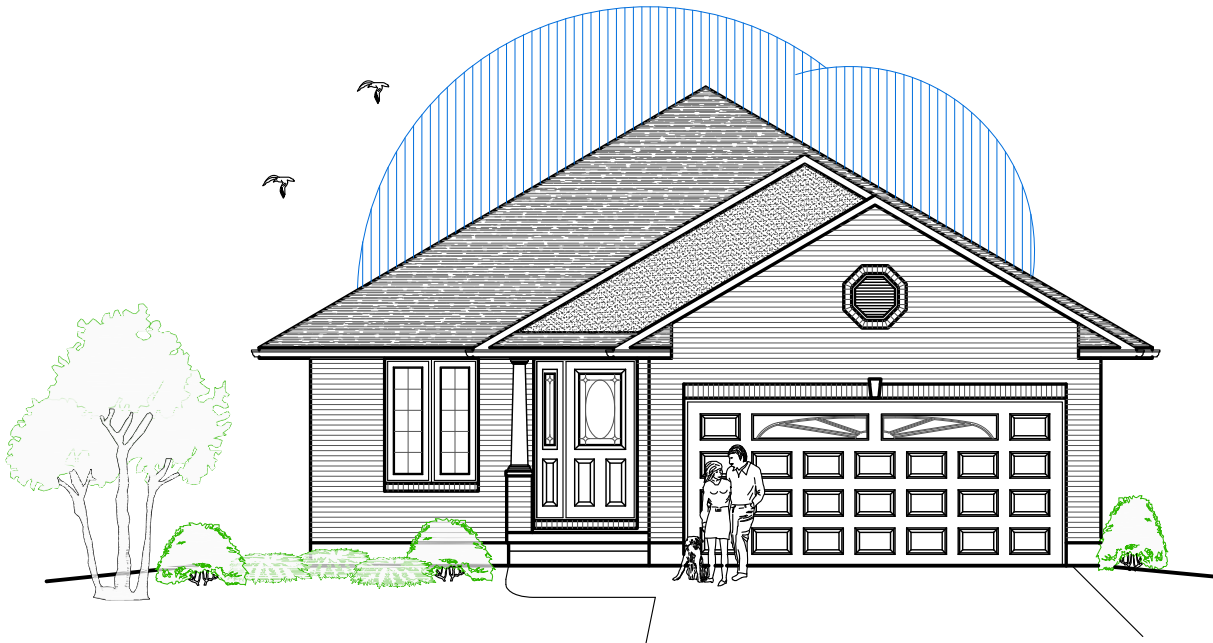
- 2 Bedrooms
- 2 Bathrooms
- Main Floor Laundry
- Covered Porch

Optional Features Available
Cold Storage
Covered Rear Deck



**DIAMOND
HOMES
BY DAVIS**

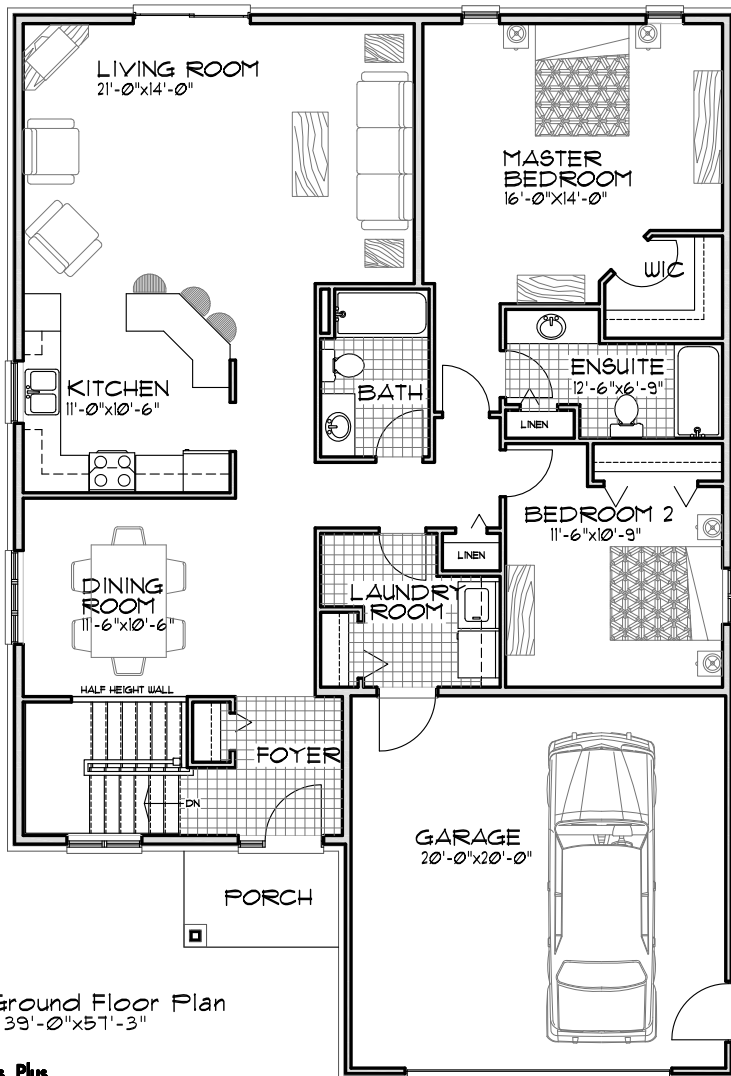
1458 Fish & Game Club Rd.
Frankford, ON K0K 2C0
Tel: (613) 398-0170 Fax: (613) 398-3297
davis.john@sympatico.ca



The Stonehaven II

Option B

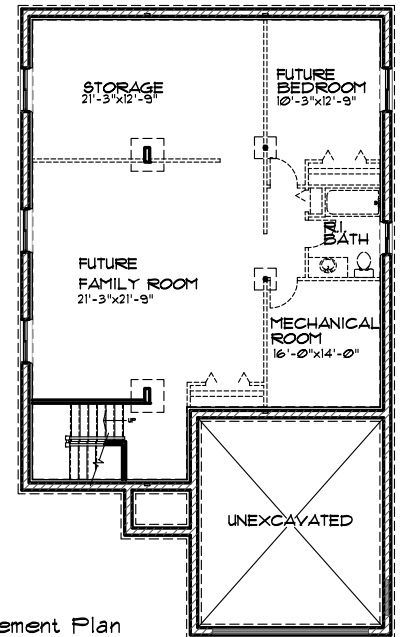
- 1585 sq.ft. -



Ground Floor Plan
39'-0" x 57'-3"

Plans by:

Designs Plus
 613-961-9256
 Sue Sampson
 CONCEPTUAL PLANS ONLY, S.O.C.



Basement Plan

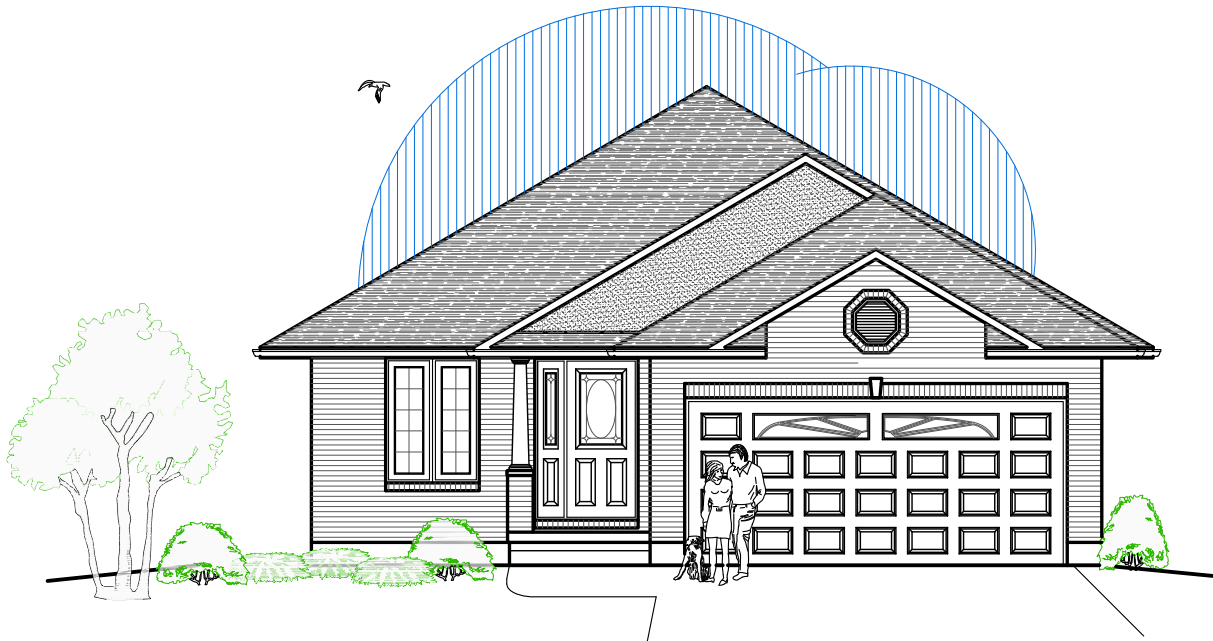
Featuring

- 2 Bedrooms
- 2 Bathrooms
- Main Floor Laundry
- Covered Porch
- Dining Room Option to Den or Bedroom 3

Optional Features Available
 Cold Storage
 Covered Rear Deck

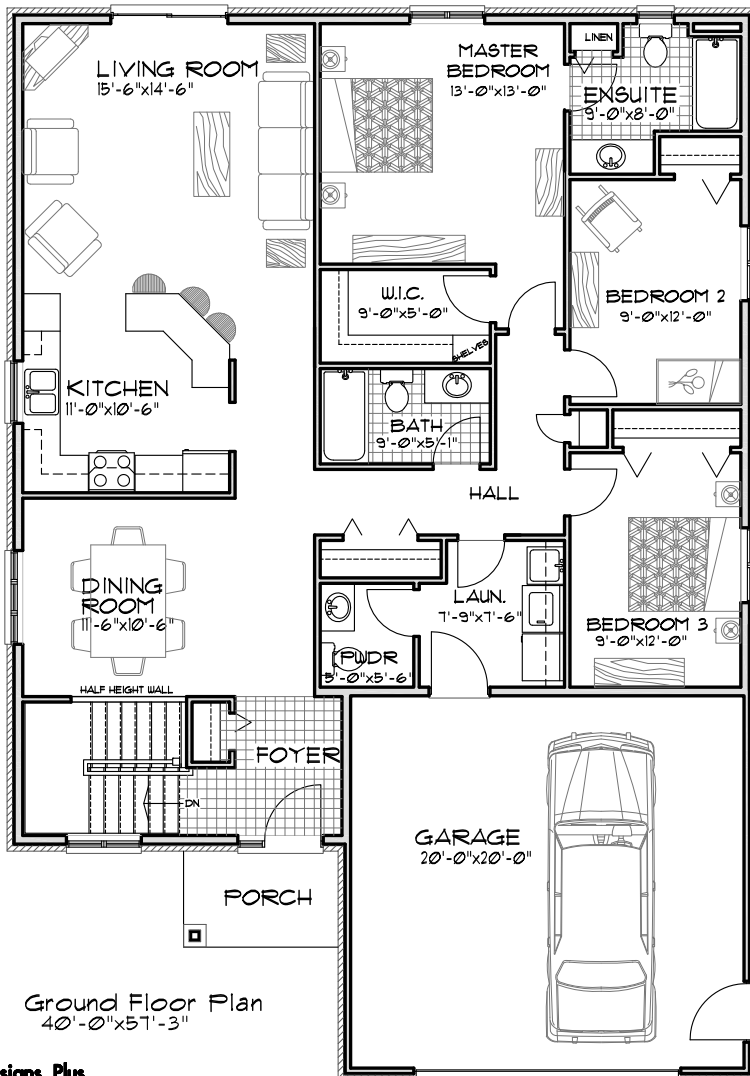


1458 Fish & Game Club Rd.
 Frankford, ON K0K 2C0
 Tel: (613) 398-0170 Fax: (613) 398-3297
 davis.john@sympatico.ca

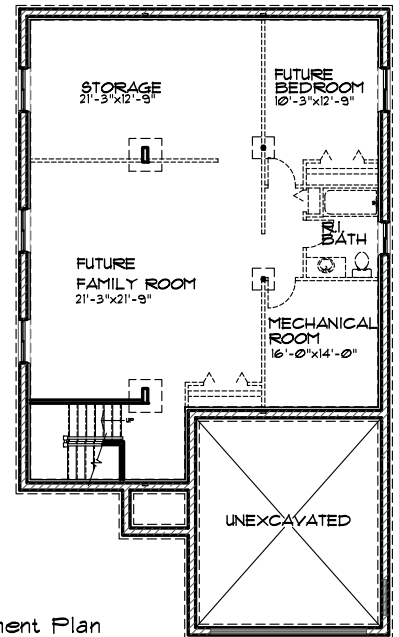


The Stonehaven

- 1620 sq.ft. -



Ground Floor Plan
40'-0" x 51'-3"



Basement Plan

Featuring

- 3 Bedrooms
- 2½ Bathrooms
- Main Floor Laundry
- Covered Porch
- Dining Room Option to Den or Bedroom 4

Optional Features Available
Cold Storage
Covered Rear Deck



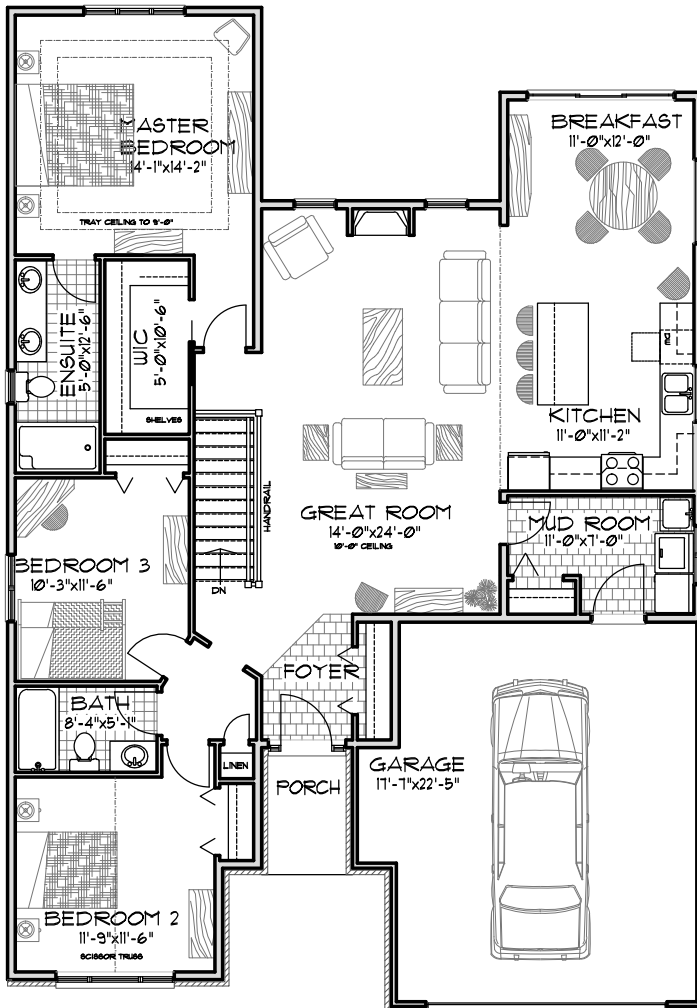
1458 Fish & Game Club Rd.
Frankford, ON K0K 2C0
Tel: (613) 398-0170 Fax: (613) 398-3297
davis.john@sympatico.ca



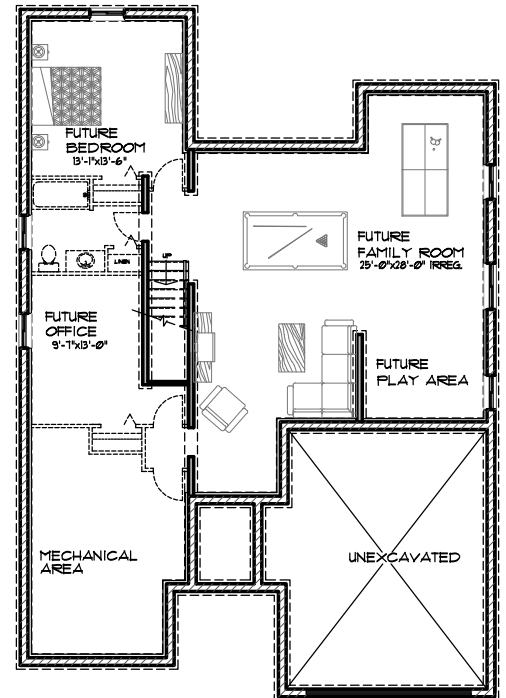
Front Elevation

The Hickory

- 1642 sq.ft. -



Ground Floor Plan
41'-0" x 59'-4"



Basement Plan

- 3 Bedrooms
- 2 Bathrooms
- Main Floor Laundry
- 10' Ceiling Living Room
- Covered Porch

- Optional Features Available
- Cold Storage
 - Covered Rear Deck



Tel: (613) 398-0170 Fax: (613) 398-3297
davis.john@sympatico.ca