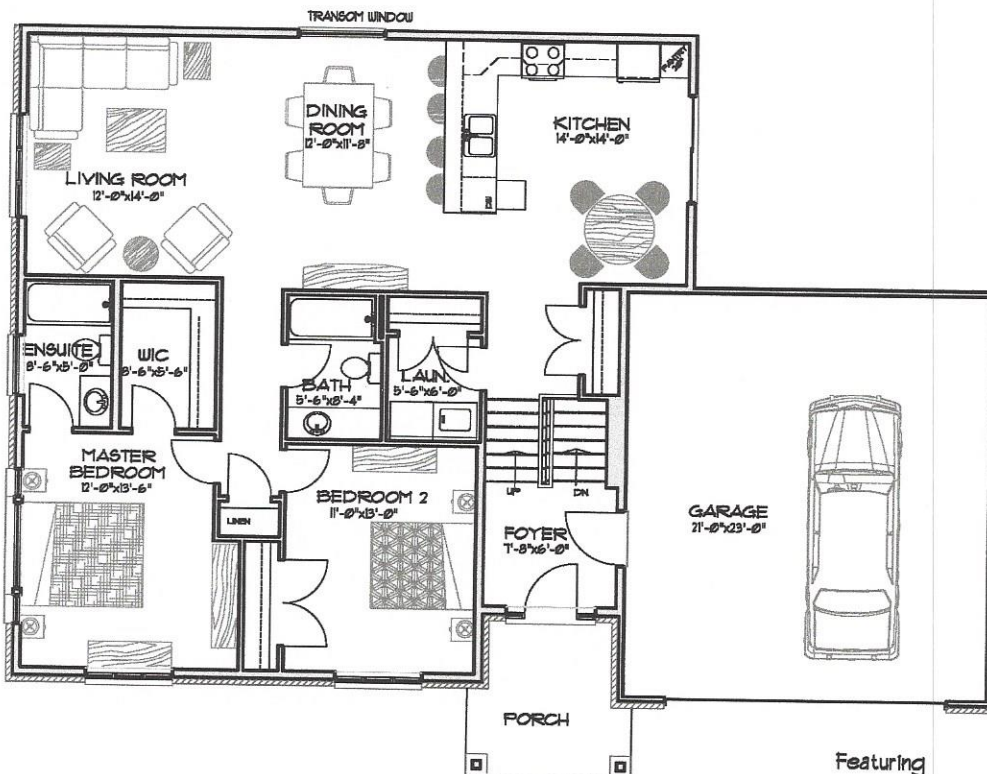




# The Armadale

7 Birchmount Street  
- 1375 sq.ft. -



Ground Floor Plan  
56'-9" x 38'-10"

**Featuring**

- 2 Bedrooms
- 2 Bathrooms
- Main Floor Laundry
- Covered Porch
- Oversize Double Garage

Optional Features Available  
Covered Rear Deck



1458 Fish & Game Club Rd.  
Frankford, ON K0K 2C0  
Tel: (613) 398-0170 Fax: (613) 398-3297  
davis.john@sympatico.ca

Plans by:  
**Designs Plus**  
613-961-9256  
Sue Sampson  
OWNER: R. & B. DAVIS